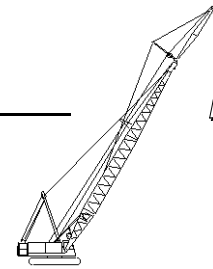




Liftcrane Jib Capacities

**Jib No. 134 With 12 Ft. 6 in. Strut On
Boom No. 84 With Open Throat Top
71,500 Lb. Counterweight
360 Degree Rating**

**Meets
ANSI B30.5
Requirements**



555 SERIES 1

LIFTING CAPACITIES: Chart supplements boom capacity chart **No. 8478-A**. Lifting capacities for various boom lengths, jib lengths and jib operating radii are for freely suspended loads and do not exceed 75% of a static tipping load. Capacities based on structural competence are denoted by an asterisk (*).

Weight of all load blocks, hooks, weight ball, slings, hoist lines, etc., beneath boom and jib point sheaves, is considered part of jib load. Boom and jib are not to be lowered beyond radii where combined weights are greater than rated capacity. Where no capacity is shown, operation is not intended or approved.

OPERATING CONDITIONS: Machine to operate in a level position on a firm uniformly supporting surface. Refer to boom rigging **No. A03931**, jib assembly **No. A05262** and Wire Rope Specification chart **No. 8482-A**. Crane operator judgment must be used to allow for dynamic load effects of swinging, hoisting or lowering, travel, wind conditions, as well as adverse operating conditions and physical machine depreciation. Refer to operators manual for operating guidelines.

MACHINE TRAVEL: Machine to travel on a firm, level and uniformly supporting surface and boom within boom angle range shown in capacity chart. Refer to Maximum Allowable Travel Specification chart **No. 8483-A**.

OPERATING RADIUS: Operating radius is horizontal distance from axis of rotation to center of vertical hoist line or load block. Boom angle is angle between horizontal and

centerline of boom butt and inserts, and is an indication of operating radius. In all cases, operating radius shall govern capacity.

JIB POINT ELEVATION: Jib point elevation is vertical distance from ground level to centerline of jib point shaft.

MACHINE EQUIPMENT: Machine equipped with 23 Ft. 10 in. crawlers, 48 in. treads, 23 Ft. live mast, 16 part boom hoist reeving, boom support straps, rotating bed **No. A01066¹** or **No. A03188** (refer to I.D. plate at front of rotating bed) and 71,500 Lb. crane counterweight.

¹WARNING: 1,250 Lb. front counterweight is required for cranes with rotating bed **No. A01066** that do not have free-fall option. Counterweight can be removed only if crane has free-fall option on both front and rear drums.

Maximum whip line capacity on 28 mm wire rope with single part line is 30,000 Lbs. or 59,000 Lbs. with two part line (20,000 Lbs. per line when auxiliary drum equipped for 26 mm wire rope is used).



71,500 Lb. Crane Counterweight
4 Side Boxes

Maximum Boom and Jib Lengths Lifted Unassisted			
Over End of Blocked Crawlers		Over Side of Crawlers	
Boom Length	Jib No. 134	Boom Length	Jib No. 134
(a) 210 Ft.	—	180 Ft.	—
200 Ft.	—	170 Ft.	—
190 Ft.	—	160 Ft.	40 Ft.
180 Ft.	40 Ft.	150 Ft.	60 Ft.
170 Ft.	60 Ft.	140 Ft.	80 Ft.
160 Ft.	80 Ft.		

Load block, hook and weight ball on ground at start.
(a) Upper boom point cannot be attached on 210 Ft. boom.

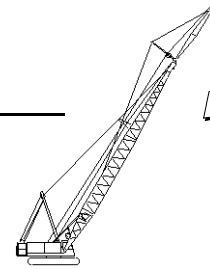
Upper boom point, third load line and load sensor sheaves for third load line must be removed before use of this chart.



Liftcrane Jib Capacities

Jib No. 134 With 12 Ft. 6 in. Strut On
Boom No. 84 With Open Throat Top
71,500 Lb. Counterweight
360 Degree Rating

Meets
ANSI B30.5
Requirements



555 SERIES 1

30 Ft. Fixed Jib

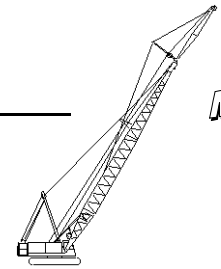
Jib Oper. Rad. Feet	5 Degree Offset			15 Degree Offset			25 Degree Offset			Jib Oper. Rad. Feet
	Boom Ang. Deg.	Jib Point Elev. Feet	Jib Capacity Pounds	Boom Ang. Deg.	Jib Point Elev. Feet	Jib Capacity Pounds	Boom Ang. Deg.	Jib Point Elev. Feet	Jib Capacity Pounds	
100 Ft. Boom										
30	80.4	137.1	59,000*							30
35	78.2	136.0	59,000*	80.5	135.2	59,000*				35
40	76.0	134.8	59,000*	78.2	134.0	59,000*	80.5	132.2	49,200*	40
45	73.8	133.3	54,000	76.0	132.5	55,100	78.2	130.7	46,800*	45
50	71.5	131.6	46,500	73.7	130.8	47,400	75.9	129.0	44,600*	50
55	69.2	129.7	40,500	71.4	128.9	41,300	73.6	127.0	42,200	55
60	66.9	127.6	35,700	69.0	126.7	36,500	71.2	124.8	37,200	60
65	64.5	125.2	31,800	66.6	124.3	32,400	68.7	122.4	33,000	65
70	62.1	122.5	28,500	64.2	121.6	29,000	66.2	119.7	29,600	70
75	59.6	119.6	25,600	61.7	118.7	26,100	63.7	116.7	26,600	75
80	57.0	116.4	23,200	59.1	115.4	23,700	61.1	113.3	24,100	80
85	54.4	112.8	21,100	56.4	111.8	21,500	58.3	109.7	21,900	85
90	51.6	108.8	19,200	53.7	107.8	19,600	55.5	105.6	19,900	90
100	45.8	99.7	16,000	47.8	98.6	16,300	49.5	96.1	16,600	100
110	39.3	88.3	13,500	41.2	87.0	13,700	42.7	84.2	13,900	110
120	31.7	73.6	11,400	33.4	72.1	11,500				120
130	21.7	52.6	9,600							130
110 Ft. Boom										
35	79.1	146.3	59,000*							35
40	77.0	145.1	59,000*	79.1	144.3	59,000*				40
45	74.9	143.7	53,800	77.0	142.9	54,900	79.1	141.1	47,700*	45
50	72.9	142.2	46,300	74.9	141.3	47,200	77.0	139.5	45,500*	50
55	70.7	140.4	40,400	72.8	139.6	41,200	74.8	137.7	42,000	55
60	68.6	138.5	35,600	70.6	137.6	36,300	72.6	135.7	37,100	60
65	66.4	136.3	31,600	68.4	135.4	32,300	70.4	133.5	32,900	65
70	64.2	133.9	28,300	66.2	133.0	28,900	68.1	131.0	29,500	70
75	61.9	131.2	25,500	63.9	130.3	26,000	65.8	128.3	26,500	75
80	59.6	128.3	23,000	61.6	127.3	23,500	63.4	125.3	24,000	80
85	57.2	125.0	20,900	59.2	124.1	21,300	61.0	122.0	21,800	85
90	54.8	121.5	19,000	56.7	120.5	19,400	58.5	118.4	19,800	90
100	49.7	113.4	15,900	51.5	112.4	16,200	53.2	110.0	16,500	100
110	44.1	103.7	13,300	45.9	102.5	13,600	47.4	99.9	13,800	110
120	37.8	91.7	11,200	39.5	90.3	11,500				120
130	30.5	76.3	9,500	32.1	74.6	9,600				130
140	20.8	54.4	7,900							140



Liftcrane Jib Capacities

Jib No. 134 With 12 Ft. 6 in. Strut On
Boom No. 84 With Open Throat Top
71,500 Lb. Counterweight
360 Degree Rating

Meets
ANSI B30.5
Requirements



555 SERIES 1

30 Ft. Fixed Jib

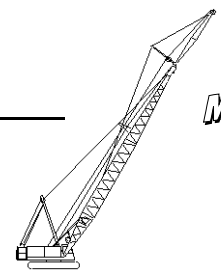
Jib Oper. Rad. Feet	5 Degree Offset			15 Degree Offset			25 Degree Offset			Jib Oper. Rad. Feet
	Boom Ang. Deg.	Jib Point Elev. Feet	Jib Capacity Pounds	Boom Ang. Deg.	Jib Point Elev. Feet	Jib Capacity Pounds	Boom Ang. Deg.	Jib Point Elev. Feet	Jib Capacity Pounds	
120 Ft. Boom										
35	79.8	156.5	59,000 *							35
40	77.9	155.4	59,000 *	79.8	154.6	59,000*				40
45	76.0	154.1	53,500	77.9	153.3	54,700	79.8	151.5	48,500*	45
50	74.0	152.7	46,000	75.9	151.8	47,000	77.9	150.0	46,400*	50
55	72.0	151.1	40,000	74.0	150.2	40,900	75.9	148.3	41,800	55
60	70.1	149.2	35,200	72.0	148.4	36,000	73.8	146.5	36,800	60
65	68.0	147.2	31,300	69.9	146.3	32,000	71.8	144.4	32,700	65
70	66.0	145.0	27,900	67.9	144.1	28,600	69.7	142.1	29,200	70
75	63.9	142.5	25,100	65.8	141.6	25,700	67.6	139.6	26,300	75
80	61.8	139.8	22,700	63.6	138.9	23,200	65.4	136.9	23,700	80
85	59.6	136.9	20,500	61.5	136.0	21,000	63.2	133.9	21,500	85
90	57.4	133.7	18,700	59.2	132.7	19,100	60.9	130.6	19,500	90
100	52.8	126.5	15,500	54.6	125.4	15,900	56.2	123.2	16,200	100
110	47.9	117.9	13,000	49.6	116.7	13,300	51.1	114.3	13,600	110
120	42.5	107.5	10,900	44.2	106.3	11,200	45.5	103.6	11,400	120
130	36.5	94.9	9,100	38.1	93.5	9,300				130
140	29.4	78.9	7,600							140
130 Ft. Boom										
35	80.4	166.7	59,000 *							35
40	78.6	165.6	59,000 *	80.5	164.8	59,000*				40
45	76.8	164.5	53,300	78.7	163.6	54,500	80.5	161.8	49,200*	45
50	75.0	163.1	45,700	76.8	162.3	46,800	78.6	160.4	47,200*	50
55	73.2	161.6	39,800	75.0	160.7	40,700	76.8	158.8	41,600	55
60	71.3	159.9	35,000	73.1	159.0	35,800	74.9	157.1	36,600	60
65	69.5	158.0	31,000	71.2	157.1	31,700	73.0	155.2	32,500	65
70	67.6	155.9	27,700	69.3	155.0	28,300	71.0	153.1	29,000	70
75	65.6	153.7	24,800	67.4	152.8	25,400	69.1	150.8	26,000	75
80	63.7	151.2	22,400	65.4	150.3	22,900	67.1	148.2	23,500	80
85	61.7	148.5	20,300	63.4	147.6	20,800	65.0	145.5	21,300	85
90	59.7	145.6	18,400	61.4	144.6	18,900	63.0	142.5	19,300	90
100	55.5	139.0	15,200	57.1	138.0	15,600	58.7	135.7	16,000	100
110	51.0	131.2	12,700	52.7	130.1	13,000	54.1	127.8	13,300	110
120	46.3	122.1	10,600	47.9	120.9	10,900	49.2	118.4	11,100	120
130	41.1	111.3	8,900	42.6	110.0	9,100	43.9	107.1	9,300	130
140	35.3	98.1	7,400	36.7	96.6	7,500				140
150	28.4	81.3	6,100							150



Liftcrane Jib Capacities

Jib No. 134 With 12 Ft. 6 in. Strut On
Boom No. 84 With Open Throat Top
71,500 Lb. Counterweight
360 Degree Rating

Meets
ANSI B30.5
Requirements



555 SERIES 1

30 Ft. Fixed Jib

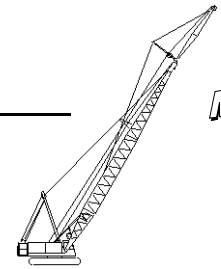
Jib Oper. Rad. Feet	5 Degree Offset			15 Degree Offset			25 Degree Offset			Jib Oper. Rad. Feet
	Boom Ang. Deg.	Jib Point Elev. Feet	Jib Capacity Pounds	Boom Ang. Deg.	Jib Point Elev. Feet	Jib Capacity Pounds	Boom Ang. Deg.	Jib Point Elev. Feet	Jib Capacity Pounds	
140 Ft. Boom										
35	81.0	176.8	59,000 *							35
40	79.3	175.9	59,000 *	81.0	175.0	59,000*				40
45	77.6	174.8	52,900	79.3	173.9	54,200				45
50	75.9	173.5	45,400	77.6	172.6	46,500	79.3	170.7	47,600	50
55	74.2	172.1	39,400	75.9	171.2	40,400	77.6	169.3	41,400	55
60	72.5	170.5	34,600	74.1	169.6	35,500	75.8	167.7	36,400	60
65	70.7	168.7	30,600	72.4	167.8	31,400	74.0	165.9	32,200	65
70	68.9	166.8	27,300	70.6	165.9	28,000	72.2	163.9	28,700	70
75	67.1	164.7	24,400	68.8	163.8	25,100	70.4	161.8	25,700	75
80	65.3	162.4	22,000	67.0	161.4	22,600	68.5	159.4	23,200	80
85	63.5	159.9	19,900	65.1	158.9	20,400	66.7	156.9	20,900	85
90	61.6	157.2	18,000	63.2	156.2	18,500	64.7	154.1	19,000	90
100	57.7	151.1	14,900	59.3	150.1	15,300	60.8	147.9	15,700	100
110	53.7	144.0	12,300	55.2	143.0	12,700	56.7	140.7	13,000	110
120	49.4	135.8	10,200	50.9	134.7	10,500	52.3	132.2	10,800	120
130	44.8	126.2	8,500	46.3	125.0	8,700	47.5	122.3	9,000	130
140	39.8	114.8	7,000	41.2	113.5	7,200	42.4	110.6	7,400	140
150	34.2	101.1	5,700	35.5	99.6	5,800				150
160	27.6	83.7	4,500							160
150 Ft. Boom										
40	79.9	186.1	59,000 *							40
45	78.3	185.0	52,700	79.9	184.1	54,000				45
50	76.7	183.8	45,100	78.3	183.0	46,300	79.9	181.1	47,500	50
55	75.1	182.5	39,200	76.7	181.6	40,200	78.3	179.7	41,200	55
60	73.4	181.0	34,400	75.0	180.1	35,300	76.6	178.2	36,200	60
65	71.8	179.3	30,400	73.4	178.4	31,200	75.0	176.5	32,000	65
70	70.1	177.5	27,100	71.7	176.6	27,800	73.3	174.7	28,500	70
75	68.5	175.5	24,200	70.0	174.6	24,900	71.6	172.6	25,600	75
80	66.8	173.4	21,800	68.3	172.5	22,400	69.8	170.5	23,000	80
85	65.0	171.1	19,600	66.6	170.1	20,200	68.1	168.1	20,800	85
90	63.3	168.5	17,800	64.8	167.6	18,300	66.3	165.5	18,800	90
100	59.7	162.9	14,600	61.2	161.9	15,100	62.6	159.8	15,500	100
110	56.0	156.4	12,100	57.5	155.4	12,500	58.8	153.1	12,800	110
120	52.1	148.9	10,000	53.5	147.8	10,300	54.8	145.4	10,600	120
130	47.9	140.2	8,300	49.4	139.1	8,600	50.6	136.5	8,800	130
140	43.5	130.2	6,800	44.9	128.9	7,000	46.0	126.2	7,200	140
150	38.6	118.3	5,500	40.0	116.9	5,700				150
160	33.2	104.0	4,400	34.5	102.4	4,500				160



Liftcrane Jib Capacities

Jib No. 134 With 12 Ft. 6 in. Strut On
Boom No. 84 With Open Throat Top
71,500 Lb. Counterweight
360 Degree Rating

Meets
ANSI B30.5
Requirements



555 SERIES 1

30 Ft. Fixed Jib

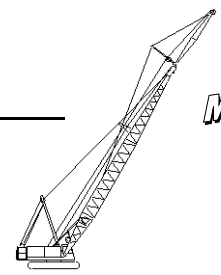
Jib Oper. Rad. Feet	5 Degree Offset			15 Degree Offset			25 Degree Offset			Jib Oper. Rad. Feet
	Boom Ang. Deg.	Jib Point Elev. Feet	Jib Capacity Pounds	Boom Ang. Deg.	Jib Point Elev. Feet	Jib Capacity Pounds	Boom Ang. Deg.	Jib Point Elev. Feet	Jib Capacity Pounds	
160 Ft. Boom										
40	80.4	196.2	59,000 *							40
45	78.9	195.2	52,400	80.5	194.4	53,800				45
50	77.4	194.1	44,800	78.9	193.2	46,100	80.5	191.3	47,300	50
55	75.9	192.9	38,900	77.4	192.0	39,900	78.9	190.1	41,000	55
60	74.3	191.4	34,000	75.8	190.6	35,000	77.4	188.6	36,000	60
65	72.8	189.9	30,100	74.3	189.0	30,900	75.8	187.0	31,800	65
70	71.2	188.2	26,700	72.7	187.3	27,500	74.2	185.3	28,300	70
75	69.6	186.3	23,900	71.1	185.4	24,600	72.6	183.4	25,300	75
80	68.0	184.3	21,400	69.5	183.4	22,100	71.0	181.4	22,700	80
85	66.4	182.1	19,300	67.9	181.2	19,900	69.3	179.1	20,500	85
90	64.8	179.7	17,400	66.2	178.8	18,000	67.6	176.7	18,500	90
100	61.4	174.5	14,300	62.9	173.5	14,800	64.2	171.4	15,200	100
110	58.0	168.4	11,700	59.4	167.4	12,200	60.7	165.2	12,500	110
120	54.4	161.5	9,700	55.8	160.5	10,000	57.0	158.1	10,300	120
130	50.6	153.6	7,900	52.0	152.5	8,200	53.2	150.0	8,500	130
140	46.6	144.5	6,400	47.9	143.3	6,700	49.0	140.7	6,900	140
150	42.3	134.0	5,100	43.6	132.7	5,300	44.6	129.9	5,500	150
160	37.6	121.7	4,000	38.8	120.2	4,200				160
170 Ft. Boom										
40	80.9	206.4	59,000 *							40
45	79.5	205.5	52,200	80.9	204.6	53,600				45
50	78.0	204.4	44,600	79.5	203.5	45,800	81.0	201.6	47,100	50
55	76.6	203.2	38,600	78.0	202.3	39,700	79.5	200.4	40,800	55
60	75.1	201.9	33,700	76.6	201.0	34,700	78.0	199.0	35,700	60
65	73.7	200.4	29,800	75.1	199.5	30,700	76.5	197.5	31,600	65
70	72.2	198.8	26,400	73.6	197.9	27,200	75.0	195.9	28,000	70
75	70.7	197.0	23,600	72.1	196.1	24,300	73.5	194.1	25,100	75
80	69.2	195.1	21,100	70.6	194.2	21,800	72.0	192.2	22,500	80
85	67.6	193.0	19,000	69.1	192.1	19,600	70.4	190.1	20,200	85
90	66.1	190.8	17,100	67.5	189.9	17,700	68.9	187.8	18,300	90
100	63.0	185.9	14,000	64.3	184.9	14,500	65.7	182.8	14,900	100
110	59.7	180.2	11,400	61.1	179.2	11,900	62.4	177.0	12,300	110
120	56.4	173.8	9,300	57.7	172.7	9,700	58.9	170.5	10,100	120
130	52.9	166.5	7,600	54.2	165.4	7,900	55.4	163.0	8,200	130
140	49.2	158.2	6,100	50.5	157.0	6,400	51.6	154.5	6,600	140
150	45.3	148.7	4,800	46.6	147.4	5,100	47.6	144.7	5,300	150
160							43.3	133.5	4,100	160



Liftcrane Jib Capacities

Jib No. 134 With 12 Ft. 6 in. Strut On
Boom No. 84 With Open Throat Top
71,500 Lb. Counterweight
360 Degree Rating

Meets
ANSI B30.5
Requirements



555 SERIES 1

30 Ft. Fixed Jib

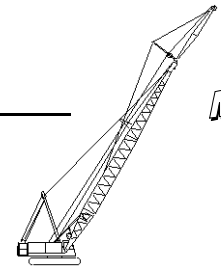
Jib Oper. Rad. Feet	5 Degree Offset			15 Degree Offset			25 Degree Offset			Jib Oper. Rad. Feet
	Boom Ang. Deg.	Jib Point Elev. Feet	Jib Capacity Pounds	Boom Ang. Deg.	Jib Point Elev. Feet	Jib Capacity Pounds	Boom Ang. Deg.	Jib Point Elev. Feet	Jib Capacity Pounds	
180 Ft. Boom										
45	80.0	215.6	51,900							45
50	78.6	214.6	44,300	80.0	213.7	45,600				50
55	77.2	213.5	38,300	78.6	212.6	39,400	80.0	210.7	40,600	55
60	75.8	212.2	33,400	77.2	211.3	34,500	78.6	209.4	35,500	60
65	74.4	210.8	29,400	75.8	209.9	30,400	77.2	207.9	31,300	65
70	73.0	209.3	26,100	74.4	208.4	26,900	75.8	206.4	27,800	70
75	71.6	207.6	23,200	73.0	206.7	24,000	74.3	204.7	24,800	75
80	70.2	205.8	20,800	71.5	204.9	21,500	72.9	202.9	22,200	80
85	68.8	203.9	18,600	70.1	202.9	19,300	71.4	200.9	19,900	85
90	67.3	201.8	16,700	68.6	200.8	17,400	69.9	198.8	18,000	90
100	64.3	197.1	13,600	65.7	196.1	14,100	66.9	194.0	14,600	100
110	61.3	191.8	11,100	62.6	190.8	11,500	63.8	188.6	12,000	110
120	58.2	185.8	9,000	59.5	184.8	9,400	60.6	182.5	9,700	120
130	54.9	179.0	7,200	56.2	177.9	7,600	57.3	175.6	7,900	130
140	51.5	171.3	5,700	52.8	170.2	6,000	53.9	167.7	6,300	140
150	48.0	162.6	4,400	49.2	161.4	4,700	50.2	158.8	4,900	150



Liftcrane Jib Capacities

Jib No. 134 With 12 Ft. 6 in. Strut On
Boom No. 84 With Open Throat Top
71,500 Lb. Counterweight
360 Degree Rating

Meets
ANSI B30.5
Requirements



555 SERIES 1

40 Ft. Fixed Jib

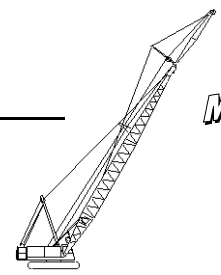
Jib Oper. Rad. Feet	5 Degree Offset			15 Degree Offset			25 Degree Offset			Jib Oper. Rad. Feet
	Boom Ang. Deg.	Jib Point Elev. Feet	Jib Capacity Pounds	Boom Ang. Deg.	Jib Point Elev. Feet	Jib Capacity Pounds	Boom Ang. Deg.	Jib Point Elev. Feet	Jib Capacity Pounds	
100 Ft. Boom										
35	79.7	146.2	52,100 *							35
40	77.7	145.0	50,600 *	80.4	143.9	45,900*				40
45	75.6	143.7	49,300 *	78.4	142.6	44,900*				45
50	73.5	142.1	47,000	76.2	141.0	44,000*	79.0	138.6	37,800*	50
55	71.4	140.4	41,100	74.1	139.2	42,100	76.9	136.8	36,100*	55
60	69.2	138.4	36,200	71.9	137.2	37,200	74.7	134.8	34,600*	60
65	67.1	136.2	32,300	69.7	135.0	33,100	72.4	132.5	33,200*	65
70	64.8	133.8	28,900	67.5	132.6	29,700	70.1	130.1	30,400	70
75	62.6	131.1	26,100	65.2	129.9	26,800	67.8	127.3	27,400	75
80	60.3	128.2	23,600	62.9	126.9	24,200	65.4	124.3	24,800	80
85	57.9	125.0	21,500	60.5	123.7	22,000	62.9	120.9	22,600	85
90	55.4	121.4	19,600	58.0	120.1	20,100	60.4	117.3	20,600	90
100	50.3	113.3	16,400	52.8	111.9	16,900	55.1	108.9	17,200	100
110	44.7	103.6	13,900	47.1	102.0	14,200	49.2	98.7	14,500	110
120	38.4	91.6	11,800	40.7	89.8	12,000				120
130	31.1	76.1	10,000	33.2	73.9	10,200				130
110 Ft. Boom										
35	80.4	156.4	52,600 *							35
40	78.5	155.3	51,200 *							40
45	76.6	154.0	49,900 *	79.1	152.9	45,300*				45
50	74.6	152.6	46,800	77.2	151.5	44,400*	79.8	149.1	38,400*	50
55	72.7	151.0	40,900	75.2	149.8	42,000	77.8	147.4	36,800*	55
60	70.7	149.2	36,000	73.2	148.0	37,000	75.7	145.5	35,300*	60
65	68.7	147.1	32,100	71.2	145.9	32,900	73.7	143.4	33,800	65
70	66.6	144.9	28,700	69.1	143.7	29,500	71.6	141.1	30,300	70
75	64.5	142.4	25,900	67.0	141.2	26,600	69.4	138.6	27,300	75
80	62.4	139.8	23,400	64.9	138.5	24,100	67.2	135.9	24,700	80
85	60.2	136.8	21,300	62.7	135.5	21,900	65.0	132.8	22,400	85
90	58.0	133.6	19,400	60.4	132.3	19,900	62.7	129.5	20,500	90
100	53.4	126.4	16,300	55.8	125.0	16,700	57.9	122.0	17,100	100
110	48.5	117.8	13,700	50.8	116.2	14,100	52.8	113.1	14,400	110
120	43.1	107.4	11,600	45.3	105.8	11,900	47.2	102.2	12,200	120
130	37.1	94.8	9,800	39.2	92.9	10,100				130
140	30.0	78.7	8,300							140



Liftcrane Jib Capacities

Jib No. 134 With 12 Ft. 6 in. Strut On
Boom No. 84 With Open Throat Top
71,500 Lb. Counterweight
360 Degree Rating

Meets
ANSI B30.5
Requirements



555 SERIES 1

40 Ft. Fixed Jib

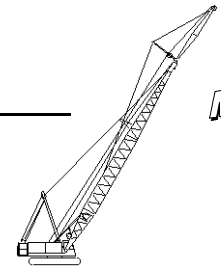
Jib Oper. Rad. Feet	5 Degree Offset			15 Degree Offset			25 Degree Offset			Jib Oper. Rad. Feet
	Boom Ang. Deg.	Jib Point Elev. Feet	Jib Capacity Pounds	Boom Ang. Deg.	Jib Point Elev. Feet	Jib Capacity Pounds	Boom Ang. Deg.	Jib Point Elev. Feet	Jib Capacity Pounds	
120 Ft. Boom										
40	79.2	165.6	51,700 *							40
45	77.4	164.4	50,500 *	79.8	163.2	45,600*				45
50	75.6	163.0	46,500	78.0	161.9	44,700*	80.5	159.4	39,000*	50
55	73.8	161.5	40,600	76.2	160.3	41,700	78.6	157.9	37,400*	55
60	71.9	159.8	35,700	74.3	158.6	36,800	76.7	156.1	36,000*	60
65	70.0	157.9	31,700	72.4	156.7	32,700	74.8	154.2	33,600	65
70	68.1	155.9	28,400	70.5	154.6	29,200	72.8	152.1	30,100	70
75	66.2	153.6	25,500	68.5	152.4	26,300	70.8	149.8	27,100	75
80	64.2	151.1	23,100	66.6	149.9	23,800	68.8	147.2	24,500	80
85	62.3	148.4	20,900	64.6	147.1	21,600	66.8	144.4	22,200	85
90	60.2	145.5	19,100	62.5	144.2	19,600	64.7	141.4	20,200	90
100	56.0	138.9	15,900	58.3	137.5	16,400	60.3	134.6	16,900	100
110	51.6	131.1	13,400	53.8	129.7	13,800	55.7	126.6	14,100	110
120	46.8	122.0	11,200	49.0	120.4	11,600	50.8	117.1	11,900	120
130	41.6	111.1	9,500	43.7	109.4	9,800	45.4	105.7	10,000	130
140	35.8	97.9	8,000	37.8	95.9	8,200				140
150	29.0	81.2	6,600							150
130 Ft. Boom										
40	79.8	175.8	52,200 *							40
45	78.2	174.7	51,000 *	80.4	173.5	45,900*				45
50	76.4	173.4	46,300	78.7	172.2	45,100*				50
55	74.7	172.0	40,300	77.0	170.8	41,500	79.3	168.3	38,000*	55
60	73.0	170.4	35,400	75.2	169.2	36,500	77.5	166.7	36,600*	60
65	71.2	168.6	31,400	73.5	167.4	32,400	75.7	164.9	33,400	65
70	69.5	166.7	28,100	71.7	165.5	29,000	73.9	162.9	29,900	70
75	67.7	164.6	25,200	69.9	163.3	26,000	72.1	160.7	26,800	75
80	65.9	162.3	22,800	68.0	161.0	23,500	70.2	158.4	24,200	80
85	64.0	159.8	20,600	66.2	158.5	21,300	68.3	155.8	22,000	85
90	62.1	157.1	18,800	64.3	155.8	19,400	66.4	153.0	20,000	90
100	58.3	151.0	15,600	60.4	149.6	16,100	62.4	146.8	16,600	100
110	54.2	143.9	13,100	56.3	142.5	13,500	58.2	139.5	13,900	110
120	49.9	135.7	11,000	52.0	134.2	11,300	53.8	130.9	11,700	120
130	45.3	126.1	9,200	47.3	124.4	9,500	49.0	120.9	9,800	130
140	40.3	114.7	7,700	42.2	112.9	7,900	43.7	109.0	8,100	140
150	34.7	101.0	6,400	36.5	98.9	6,600				150
160	28.1	83.6	5,200							160



Liftcrane Jib Capacities

Jib No. 134 With 12 Ft. 6 in. Strut On
Boom No. 84 With Open Throat Top
71,500 Lb. Counterweight
360 Degree Rating

Meets
ANSI B30.5
Requirements



555 SERIES 1

40 Ft. Fixed Jib

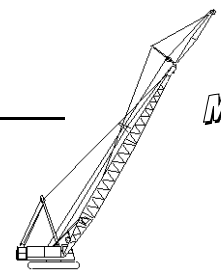
Jib Oper. Rad. Feet	5 Degree Offset			15 Degree Offset			25 Degree Offset			Jib Oper. Rad. Feet
	Boom Ang. Deg.	Jib Point Elev. Feet	Jib Capacity Pounds	Boom Ang. Deg.	Jib Point Elev. Feet	Jib Capacity Pounds	Boom Ang. Deg.	Jib Point Elev. Feet	Jib Capacity Pounds	
140 Ft. Boom										
40	80.4	186.0	52,600 *							40
45	78.8	184.9	51,400 *							45
50	77.2	183.7	45,900	79.4	182.5	45,400*				50
55	75.6	182.4	39,900	77.7	181.2	41,200	79.9	178.7	38,500*	55
60	74.0	180.9	35,100	76.1	179.7	36,200	78.2	177.1	37,200*	60
65	72.3	179.2	31,100	74.4	178.0	32,100	76.6	175.5	33,200	65
70	70.6	177.4	27,700	72.8	176.2	28,700	74.9	173.6	29,600	70
75	69.0	175.5	24,900	71.1	174.2	25,700	73.1	171.6	26,600	75
80	67.3	173.3	22,400	69.3	172.0	23,200	71.4	169.4	24,000	80
85	65.5	171.0	20,200	67.6	169.7	21,000	69.6	167.0	21,700	85
90	63.8	168.4	18,400	65.8	167.1	19,000	67.8	164.4	19,700	90
100	60.2	162.8	15,200	62.2	161.5	15,800	64.1	158.6	16,300	100
110	56.5	156.3	12,700	58.5	154.9	13,100	60.3	151.9	13,600	110
120	52.6	148.8	10,600	54.5	147.3	11,000	56.3	144.2	11,400	120
130	48.4	140.1	8,800	50.3	138.5	9,100	52.0	135.2	9,500	130
140	44.0	130.0	7,300	45.8	128.3	7,600	47.4	124.7	7,800	140
150	39.1	118.2	6,000	40.9	116.3	6,200				150
160	33.7	103.9	4,800	35.3	101.7	5,000				160
150 Ft. Boom										
40	80.9	196.1	53,000 *							40
45	79.4	195.2	51,900 *							45
50	77.9	194.0	45,700	79.9	192.8	45,600*				50
55	76.4	192.8	39,700	78.4	191.6	41,000	80.5	189.0	39,000*	55
60	74.8	191.4	34,800	76.8	190.1	36,000	78.9	187.6	37,200	60
65	73.3	189.8	30,800	75.3	188.6	31,900	77.3	186.0	33,000	65
70	71.7	188.1	27,500	73.7	186.8	28,500	75.7	184.2	29,400	70
75	70.1	186.2	24,600	72.1	185.0	25,500	74.1	182.3	26,400	75
80	68.5	184.2	22,200	70.5	182.9	23,000	72.4	180.3	23,800	80
85	66.9	182.0	20,000	68.9	180.7	20,800	70.8	178.0	21,500	85
90	65.3	179.7	18,100	67.2	178.3	18,800	69.1	175.6	19,500	90
100	61.9	174.4	15,000	63.8	173.0	15,600	65.7	170.2	16,100	100
110	58.4	168.3	12,400	60.3	166.9	12,900	62.1	164.0	13,400	110
120	54.8	161.4	10,300	56.7	160.0	10,800	58.4	156.9	11,200	120
130	51.0	153.5	8,600	52.9	151.9	8,900	54.5	148.7	9,300	130
140	47.0	144.4	7,100	48.8	142.7	7,400	50.4	139.3	7,700	140
150	42.7	133.9	5,800	44.5	132.1	6,000	45.9	128.3	6,300	150
160	38.0	121.5	4,600	39.7	119.6	4,900				160



Liftcrane Jib Capacities

Jib No. 134 With 12 Ft. 6 in. Strut On
 Boom No. 84 With Open Throat Top
 71,500 Lb. Counterweight
 360 Degree Rating

Meets
 ANSI B30.5
 Requirements



555 SERIES 1

40 Ft. Fixed Jib

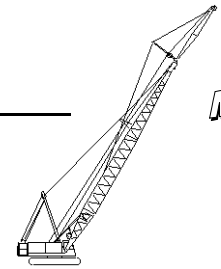
Jib Oper. Rad. Feet	5 Degree Offset			15 Degree Offset			25 Degree Offset			Jib Oper. Rad. Feet
	Boom Ang. Deg.	Jib Point Elev. Feet	Jib Capacity Pounds	Boom Ang. Deg.	Jib Point Elev. Feet	Jib Capacity Pounds	Boom Ang. Deg.	Jib Point Elev. Feet	Jib Capacity Pounds	
160 Ft. Boom										
45	79.9	205.4	52,200*							45
50	78.5	204.3	45,400	80.4	203.1	45,900*				50
55	77.0	203.1	39,400	79.0	201.9	40,800	80.9	199.3	39,500*	55
60	75.6	201.8	34,500	77.5	200.5	35,800	79.5	197.9	37,000	60
65	74.1	200.3	30,500	76.0	199.0	31,600	78.0	196.4	32,800	65
70	72.6	198.7	27,100	74.5	197.4	28,200	76.4	194.8	29,200	70
75	71.1	196.9	24,300	73.0	195.6	25,200	74.9	193.0	26,200	75
80	69.6	195.0	21,800	71.5	193.7	22,700	73.4	191.0	23,500	80
85	68.1	192.9	19,700	70.0	191.6	20,500	71.8	188.9	21,200	85
90	66.6	190.7	17,800	68.4	189.4	18,500	70.2	186.7	19,200	90
100	63.4	185.8	14,600	65.3	184.4	15,200	67.0	181.6	15,900	100
110	60.2	180.1	12,100	62.0	178.7	12,600	63.7	175.8	13,100	110
120	56.8	173.7	10,000	58.6	172.2	10,400	60.3	169.2	10,900	120
130	53.3	166.4	8,200	55.1	164.9	8,600	56.7	161.7	9,000	130
140	49.7	158.0	6,700	51.4	156.5	7,100	52.9	153.1	7,400	140
150	45.8	148.5	5,400	47.5	146.8	5,700	48.9	143.2	6,000	150
160	41.6	137.6	4,300	43.2	135.7	4,500	44.5	131.8	4,700	160
170 Ft. Boom										
45	80.4	215.6	52,600*							45
50	79.0	214.5	45,100	80.9	213.3	46,100*				50
55	77.7	213.4	39,100	79.5	212.2	40,600				55
60	76.3	212.1	34,200	78.1	210.9	35,500	80.0	208.3	36,900	60
65	74.9	210.7	30,200	76.7	209.5	31,400	78.6	206.9	32,600	65
70	73.5	209.2	26,800	75.3	207.9	27,900	77.1	205.3	29,000	70
75	72.1	207.5	24,000	73.9	206.3	25,000	75.7	203.6	25,900	75
80	70.6	205.7	21,500	72.4	204.4	22,400	74.2	201.7	23,300	80
85	69.2	203.8	19,400	71.0	202.5	20,200	72.8	199.8	21,000	85
90	67.7	201.7	17,500	69.5	200.4	18,200	71.3	197.6	19,000	90
100	64.8	197.0	14,300	66.5	195.7	15,000	68.2	192.9	15,600	100
110	61.7	191.7	11,700	63.5	190.3	12,300	65.1	187.4	12,900	110
120	58.6	185.7	9,600	60.3	184.3	10,100	61.9	181.3	10,600	120
130	55.3	178.9	7,900	57.0	177.4	8,300	58.6	174.3	8,700	130
140	51.9	171.2	6,400	53.6	169.6	6,800	55.1	166.4	7,100	140
150	48.4	162.5	5,100	50.0	160.8	5,400	51.4	157.4	5,700	150
160	44.6	152.6	4,000	46.2	150.8	4,200	47.5	147.1	4,500	160



Liftcrane Jib Capacities

Jib No. 134 With 12 Ft. 6 in. Strut On
Boom No. 84 With Open Throat Top
71,500 Lb. Counterweight
360 Degree Rating

Meets
ANSI B30.5
Requirements



555 SERIES 1

40 Ft. Fixed Jib

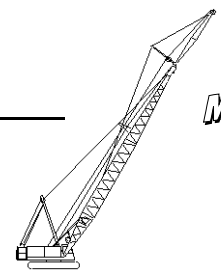
Jib Oper. Rad. Feet	5 Degree Offset			15 Degree Offset			25 Degree Offset			Jib Oper. Rad. Feet
	Boom Ang. Deg.	Jib Point Elev. Feet	Jib Capacity Pounds	Boom Ang. Deg.	Jib Point Elev. Feet	Jib Capacity Pounds	Boom Ang. Deg.	Jib Point Elev. Feet	Jib Capacity Pounds	
180 Ft. Boom										
45	80.8	225.7	52,500							45
50	79.5	224.8	44,800							50
55	78.2	223.7	38,800	80.0	222.4	40,300				55
60	76.9	222.5	33,900	78.7	221.2	35,300	80.4	218.6	36,700	60
65	75.6	221.1	29,900	77.3	219.9	31,100	79.1	217.2	32,400	65
70	74.2	219.7	26,500	76.0	218.4	27,600	77.7	215.7	28,800	70
75	72.9	218.1	23,600	74.6	216.8	24,700	76.4	214.1	25,700	75
80	71.5	216.4	21,200	73.3	215.1	22,100	75.0	212.4	23,000	80
85	70.2	214.5	19,000	71.9	213.2	19,900	73.6	210.5	20,700	85
90	68.8	212.5	17,100	70.5	211.2	17,900	72.2	208.5	18,700	90
100	66.0	208.1	13,900	67.7	206.8	14,600	69.3	204.0	15,300	100
110	63.1	203.1	11,400	64.8	201.7	12,000	66.4	198.8	12,600	110
120	60.2	197.4	9,300	61.8	196.0	9,800	63.4	193.1	10,300	120
130	57.1	191.1	7,500	58.7	189.6	8,000	60.2	186.5	8,400	130
140	54.0	183.9	6,000	55.6	182.4	6,400	57.0	179.2	6,800	140
150	50.7	175.8	4,700	52.2	174.3	5,100	53.6	170.9	5,400	150
160							50.0	161.5	4,200	160



Liftcrane Jib Capacities

Jib No. 134 With 12 Ft. 6 in. Strut On
Boom No. 84 With Open Throat Top
71,500 Lb. Counterweight
360 Degree Rating

Meets
ANSI B30.5
Requirements



555 SERIES 1

50 Ft. Fixed Jib

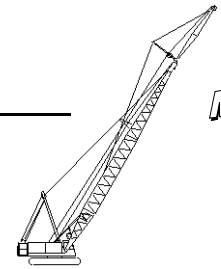
Jib Oper. Rad. Feet	5 Degree Offset			15 Degree Offset			25 Degree Offset			Jib Oper. Rad. Feet
	Boom Ang. Deg.	Jib Point Elev. Feet	Jib Capacity Pounds	Boom Ang. Deg.	Jib Point Elev. Feet	Jib Capacity Pounds	Boom Ang. Deg.	Jib Point Elev. Feet	Jib Capacity Pounds	
100 Ft. Boom										
35	80.8	156.4	42,800 *							35
40	78.9	155.3	41,600 *							40
45	76.9	154.0	40,500 *	80.2	152.8	36,900*				45
50	75.0	152.6	39,500 *	78.2	151.3	36,100*				50
55	73.0	151.0	38,500 *	76.2	149.7	35,300*	79.9	147.2	30,000*	55
60	71.0	149.1	36,600	74.2	147.8	34,600*	77.9	145.4	29,600*	60
65	69.0	147.1	32,600	72.2	145.8	33,600	75.8	143.3	28,700*	65
70	67.0	144.9	29,200	70.1	143.5	30,100	73.7	141.1	27,600*	70
75	64.9	142.4	26,400	68.0	141.0	27,200	71.5	138.6	26,600*	75
80	62.8	139.7	23,900	65.9	138.3	24,700	69.4	135.9	25,600	80
85	60.6	136.8	21,800	63.7	135.4	22,500	67.1	132.9	23,300	85
90	58.4	133.6	19,900	61.4	132.1	20,500	64.8	129.6	21,300	90
100	53.8	126.4	16,700	56.8	124.8	17,300	60.1	122.2	17,900	100
110	48.8	117.7	14,200	51.8	116.0	14,600	54.9	113.3	15,100	110
120	43.4	107.4	12,100	46.3	105.5	12,400	49.3	102.6	12,800	120
130	37.4	94.8	10,300	40.1	92.6	10,600				130
140	30.3	78.7	8,800	32.8	76.0	9,000				140
110 Ft. Boom										
40	79.5	165.5	42,000 *							40
45	77.7	164.4	41,000 *	80.8	163.1	37,200*				45
50	75.9	163.0	40,000 *	79.0	161.7	36,400*				50
55	74.1	161.5	39,000 *	77.1	160.2	35,700*	80.6	157.7	30,000*	55
60	72.2	159.8	36,400	75.2	158.5	35,000*	78.7	155.9	29,800*	60
65	70.4	157.9	32,400	73.4	156.6	33,400	76.7	154.0	29,200*	65
70	68.5	155.8	29,000	71.4	154.5	30,000	74.8	152.0	28,100*	70
75	66.5	153.6	26,200	69.5	152.2	27,000	72.8	149.7	27,200*	75
80	64.6	151.1	23,700	67.5	149.7	24,500	70.8	147.1	25,400	80
85	62.6	148.4	21,600	65.5	146.9	22,300	68.7	144.4	23,100	85
90	60.6	145.5	19,700	63.4	144.0	20,300	66.7	141.4	21,100	90
100	56.3	138.9	16,500	59.2	137.3	17,100	62.3	134.7	17,700	100
110	51.9	131.1	14,000	54.7	129.4	14,400	57.7	126.7	15,000	110
120	47.2	122.0	11,900	49.9	120.2	12,300	52.8	117.3	12,700	120
130	42.0	111.1	10,100	44.6	109.1	10,400	47.4	106.0	10,800	130
140	36.2	97.9	8,600	38.7	95.6	8,800				140
150	29.3	81.1	7,200							150



Liftcrane Jib Capacities

Jib No. 134 With 12 Ft. 6 in. Strut On
Boom No. 84 With Open Throat Top
71,500 Lb. Counterweight
360 Degree Rating

Meets
ANSI B30.5
Requirements



555 SERIES 1

50 Ft. Fixed Jib

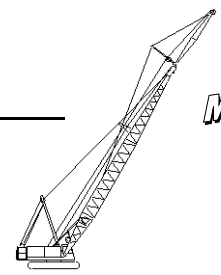
Jib Oper. Rad. Feet	5 Degree Offset			15 Degree Offset			25 Degree Offset			Jib Oper. Rad. Feet
	Boom Ang. Deg.	Jib Point Elev. Feet	Jib Capacity Pounds	Boom Ang. Deg.	Jib Point Elev. Feet	Jib Capacity Pounds	Boom Ang. Deg.	Jib Point Elev. Feet	Jib Capacity Pounds	
120 Ft. Boom										
40	80.2	175.8	42,400 *							40
45	78.5	174.7	41,400 *							45
50	76.8	173.4	40,400 *	79.6	172.0	36,700*				50
55	75.0	172.0	39,500 *	77.9	170.6	36,000*				55
60	73.3	170.4	36,000	76.1	169.0	35,300*	79.4	166.4	30,000*	60
65	71.6	168.6	32,000	74.4	167.2	33,200	77.6	164.7	29,600*	65
70	69.8	166.7	28,700	72.6	165.3	29,700	75.8	162.7	28,700*	70
75	68.0	164.6	25,800	70.8	163.1	26,800	73.9	160.6	27,700*	75
80	66.2	162.3	23,300	68.9	160.8	24,200	72.0	158.2	25,200	80
85	64.3	159.8	21,200	67.1	158.3	22,000	70.1	155.7	22,900	85
90	62.4	157.1	19,300	65.2	155.6	20,000	68.2	152.9	20,900	90
100	58.6	151.0	16,200	61.3	149.4	16,800	64.2	146.7	17,500	100
110	54.5	143.9	13,600	57.2	142.3	14,100	60.0	139.5	14,700	110
120	50.2	135.7	11,500	52.8	133.9	11,900	55.6	131.1	12,400	120
130	45.6	126.1	9,700	48.2	124.2	10,100	50.8	121.2	10,500	130
140	40.6	114.7	8,200	43.1	112.6	8,500	45.6	109.3	8,900	140
150	35.0	100.9	6,900	37.3	98.5	7,100				150
160	28.4	83.5	5,700							160
130 Ft. Boom										
40	80.7	186.0	42,700 *							40
45	79.1	184.9	41,800 *							45
50	77.5	183.7	40,800 *	80.2	182.4	36,900*				50
55	75.9	182.4	39,900 *	78.6	181.0	36,200*				55
60	74.3	180.9	35,700	76.9	179.5	35,600*	80.0	176.9	30,000*	60
65	72.6	179.2	31,700	75.3	177.8	32,900	78.3	175.2	29,700*	65
70	70.9	177.4	28,400	73.6	176.0	29,500	76.6	173.4	29,100*	70
75	69.3	175.4	25,500	71.9	174.0	26,500	74.9	171.4	27,700	75
80	67.6	173.3	23,000	70.2	171.8	24,000	73.1	169.2	25,000	80
85	65.8	170.9	20,900	68.4	169.5	21,700	71.4	166.8	22,700	85
90	64.1	168.4	19,000	66.7	166.9	19,800	69.6	164.3	20,700	90
100	60.5	162.8	15,800	63.1	161.2	16,500	65.9	158.5	17,300	100
110	56.8	156.3	13,300	59.3	154.7	13,900	62.0	151.9	14,500	110
120	52.9	148.8	11,200	55.3	147.1	11,700	58.0	144.2	12,200	120
130	48.7	140.1	9,400	51.1	138.3	9,800	53.7	135.3	10,300	130
140	44.3	130.0	7,900	46.6	128.0	8,300	49.1	124.9	8,600	140
150	39.4	118.1	6,600	41.7	116.0	6,900	44.0	112.5	7,200	150
160	34.0	103.8	5,500	36.1	101.4	5,700				160
170	27.5	85.8	4,400							170



Liftcrane Jib Capacities

Jib No. 134 With 12 Ft. 6 in. Strut On
 Boom No. 84 With Open Throat Top
 71,500 Lb. Counterweight
 360 Degree Rating

Meets
 ANSI B30.5
 Requirements



555 SERIES 1

50 Ft. Fixed Jib

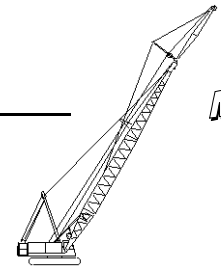
Jib Oper. Rad. Feet	5 Degree Offset			15 Degree Offset			25 Degree Offset			Jib Oper. Rad. Feet
	Boom Ang. Deg.	Jib Point Elev. Feet	Jib Capacity Pounds	Boom Ang. Deg.	Jib Point Elev. Feet	Jib Capacity Pounds	Boom Ang. Deg.	Jib Point Elev. Feet	Jib Capacity Pounds	
140 Ft. Boom										
45	79.7	195.1	42,100 *							45
50	78.2	194.0	41,200 *	80.7	192.6	37,100*				50
55	76.6	192.7	40,300 *	79.2	191.3	36,500*				55
60	75.1	191.3	35,400	77.6	189.9	35,800*	80.5	187.2	30,000*	60
65	73.5	189.8	31,400	76.1	188.4	32,600	78.9	185.7	29,900*	65
70	72.0	188.1	28,000	74.5	186.6	29,200	77.3	183.9	29,500*	70
75	70.4	186.2	25,100	72.9	184.8	26,200	75.7	182.1	27,400	75
80	68.8	184.2	22,700	71.3	182.7	23,600	74.1	180.0	24,700	80
85	67.2	182.0	20,500	69.7	180.5	21,400	72.4	177.8	22,400	85
90	65.5	179.6	18,600	68.0	178.1	19,400	70.8	175.4	20,400	90
100	62.2	174.4	15,400	64.6	172.8	16,200	67.3	170.1	17,000	100
110	58.7	168.3	12,900	61.1	166.7	13,500	63.8	163.9	14,200	110
120	55.1	161.4	10,800	57.5	159.7	11,300	60.0	156.8	11,900	120
130	51.3	153.5	9,000	53.7	151.7	9,500	56.1	148.7	10,000	130
140	47.3	144.4	7,500	49.6	142.5	7,900	52.0	139.4	8,300	140
150	43.0	133.8	6,200	45.2	131.8	6,500	47.5	128.5	6,900	150
160	38.3	121.5	5,100	40.4	119.2	5,300				160
170	33.0	106.7	4,100	35.0	104.1	4,300				170
150 Ft. Boom										
45	80.2	205.3	42,400 *							45
50	78.8	204.3	41,500 *							50
55	77.3	203.1	40,000	79.7	201.7	36,700*				55
60	75.8	201.7	35,100	78.3	200.3	36,100*	81.0	197.6	30,000*	60
65	74.4	200.3	31,100	76.8	198.8	32,400	79.5	196.1	30,000*	65
70	72.9	198.6	27,800	75.3	197.2	29,000	78.0	194.5	29,600*	70
75	71.4	196.9	24,900	73.8	195.4	26,000	76.5	192.7	27,200	75
80	69.9	195.0	22,400	72.3	193.5	23,400	74.9	190.7	24,600	80
85	68.4	192.9	20,300	70.7	191.4	21,200	73.4	188.7	22,300	85
90	66.8	190.7	18,400	69.2	189.2	19,200	71.8	186.4	20,200	90
100	63.7	185.8	15,200	66.0	184.2	15,900	68.6	181.4	16,800	100
110	60.4	180.1	12,600	62.7	178.5	13,300	65.3	175.7	14,000	110
120	57.1	173.7	10,500	59.4	172.0	11,100	61.8	169.1	11,700	120
130	53.6	166.3	8,800	55.8	164.6	9,300	58.2	161.6	9,800	130
140	49.9	158.0	7,300	52.1	156.2	7,700	54.4	153.1	8,200	140
150	46.0	148.5	6,000	48.2	146.5	6,300	50.4	143.3	6,700	150
160	41.9	137.6	4,800	43.9	135.4	5,200	46.1	132.0	5,500	160
170				39.3	122.4	4,100				170



Liftcrane Jib Capacities

Jib No. 134 With 12 Ft. 6 in. Strut On
Boom No. 84 With Open Throat Top
71,500 Lb. Counterweight
360 Degree Rating

Meets
ANSI B30.5
Requirements



555 SERIES 1

50 Ft. Fixed Jib

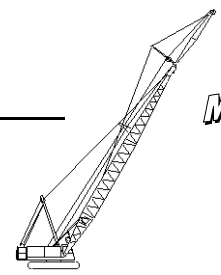
Jib Oper. Rad. Feet	5 Degree Offset			15 Degree Offset			25 Degree Offset			Jib Oper. Rad. Feet
	Boom Ang. Deg.	Jib Point Elev. Feet	Jib Capacity Pounds	Boom Ang. Deg.	Jib Point Elev. Feet	Jib Capacity Pounds	Boom Ang. Deg.	Jib Point Elev. Feet	Jib Capacity Pounds	
160 Ft. Boom										
45	80.7	215.5	42,700 *							45
50	79.3	214.5	41,900 *							50
55	77.9	213.4	39,700	80.2	211.9	36,900*				55
60	76.5	212.1	34,800	78.8	210.7	36,300*				60
65	75.1	210.7	30,800	77.4	209.3	32,200	80.0	206.5	30,000*	65
70	73.7	209.2	27,400	76.0	207.7	28,700	78.6	204.9	29,800*	70
75	72.3	207.5	24,500	74.6	206.0	25,700	77.2	203.2	27,000	75
80	70.9	205.7	22,100	73.2	204.2	23,100	75.7	201.4	24,400	80
85	69.4	203.7	19,900	71.7	202.2	20,900	74.2	199.4	22,000	85
90	68.0	201.6	18,000	70.2	200.1	18,900	72.7	197.3	20,000	90
100	65.0	197.0	14,800	67.2	195.4	15,600	69.7	192.6	16,500	100
110	62.0	191.7	12,300	64.2	190.1	13,000	66.6	187.2	13,700	110
120	58.8	185.7	10,200	61.0	184.0	10,800	63.4	181.1	11,500	120
130	55.6	178.8	8,400	57.7	177.1	8,900	60.0	174.2	9,500	130
140	52.2	171.1	6,900	54.3	169.3	7,400	56.6	166.3	7,900	140
150	48.6	162.4	5,600	50.7	160.5	6,000	52.9	157.4	6,400	150
160	44.9	152.5	4,500	46.9	150.5	4,800	49.0	147.2	5,200	160
170							44.7	135.4	4,100	170
170 Ft. Boom										
50	79.8	224.7	42,200 *							50
55	78.5	223.6	39,400	80.7	222.2	37,100*				55
60	77.1	222.4	34,500	79.4	221.0	36,100				60
65	75.8	221.1	30,500	78.0	219.6	32,000	80.5	216.8	30,000*	65
70	74.5	219.6	27,100	76.7	218.2	28,400	79.2	215.3	29,900*	70
75	73.1	218.1	24,200	75.3	216.6	25,500	77.8	213.7	26,800	75
80	71.8	216.3	21,800	74.0	214.8	22,900	76.4	212.0	24,100	80
85	70.4	214.5	19,600	72.6	213.0	20,600	75.0	210.1	21,800	85
90	69.0	212.5	17,700	71.2	211.0	18,700	73.6	208.1	19,700	90
100	66.2	208.1	14,500	68.4	206.5	15,300	70.7	203.7	16,300	100
110	63.4	203.1	12,000	65.5	201.5	12,700	67.8	198.6	13,500	110
120	60.4	197.4	9,900	62.5	195.8	10,500	64.8	192.8	11,200	120
130	57.4	191.0	8,100	59.4	189.3	8,600	61.6	186.4	9,300	130
140	54.2	183.9	6,600	56.2	182.1	7,100	58.4	179.0	7,600	140
150	50.9	175.8	5,300	52.9	174.0	5,700	55.0	170.8	6,200	150
160	47.4	166.7	4,200	49.4	164.8	4,500	51.4	161.5	4,900	160



Liftcrane Jib Capacities

Jib No. 134 With 12 Ft. 6 in. Strut On
Boom No. 84 With Open Throat Top
71,500 Lb. Counterweight
360 Degree Rating

Meets
ANSI B30.5
Requirements



555 SERIES 1

60 Ft. Fixed Jib

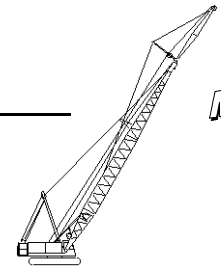
Jib Oper. Rad. Feet	5 Degree Offset			15 Degree Offset			25 Degree Offset			Jib Oper. Rad. Feet
	Boom Ang. Deg.	Jib Point Elev. Feet	Jib Capacity Pounds	Boom Ang. Deg.	Jib Point Elev. Feet	Jib Capacity Pounds	Boom Ang. Deg.	Jib Point Elev. Feet	Jib Capacity Pounds	
100 Ft. Boom										
40	80.0	165.8	30,000 *							40
45	78.2	164.6	30,000 *							45
50	76.4	163.3	30,000 *	80.0	162.0	28,400*				50
55	74.5	161.8	30,000 *	78.2	160.5	27,700*				55
60	72.7	160.2	29,400 *	76.3	158.8	27,200*	80.1	155.8	25,000*	60
65	70.8	158.3	28,800 *	74.4	156.9	26,600*	78.2	153.9	24,600*	65
70	68.9	156.3	28,100 *	72.5	154.9	26,100*	76.2	151.8	24,200*	70
75	67.0	154.0	26,700	70.6	152.6	25,600*	74.2	149.5	23,600*	75
80	65.0	151.6	24,200	68.6	150.2	25,100*	72.2	147.0	22,600*	80
85	63.1	149.0	22,100	66.6	147.5	22,900	70.2	144.2	21,700*	85
90	61.0	146.1	20,200	64.6	144.6	20,900	68.1	141.2	20,900*	90
100	56.8	139.6	17,000	60.3	138.0	17,700	63.7	134.5	18,300	100
110	52.4	131.9	14,400	55.9	130.2	15,000	59.1	126.5	15,500	110
120	47.7	122.9	12,300	51.1	121.1	12,800	54.2	117.1	13,200	120
130	42.6	112.2	10,600	45.8	110.3	10,900	48.8	105.8	11,300	130
140	36.8	99.3	9,000	40.0	97.0	9,400	42.6	91.9	9,600	140
150	30.1	83.0	7,700	33.0	80.2	7,900				150
160	21.4	60.2	6,500							160
110 Ft. Boom										
40	80.6	176.0	30,000 *							40
45	78.9	174.9	30,000 *							45
50	77.2	173.7	30,000 *	80.6	172.3	28,600*				50
55	75.5	172.3	30,000 *	78.9	170.9	28,000*				55
60	73.7	170.7	29,800 *	77.2	169.3	27,400*	80.7	166.2	25,200*	60
65	72.0	169.0	29,200 *	75.4	167.6	26,900*	78.9	164.5	24,800*	65
70	70.2	167.1	28,600 *	73.6	165.7	26,400*	77.1	162.5	24,400*	70
75	68.4	165.0	26,400	71.8	163.6	25,900*	75.3	160.4	24,000*	75
80	66.6	162.7	24,000	70.0	161.3	24,900	73.4	158.0	23,200*	80
85	64.8	160.3	21,800	68.1	158.8	22,700	71.5	155.5	22,300*	85
90	62.9	157.6	19,900	66.2	156.1	20,700	69.5	152.7	21,400*	90
100	59.0	151.6	16,800	62.3	150.0	17,500	65.6	146.5	18,200	100
110	55.0	144.6	14,200	58.2	143.0	14,800	61.4	139.3	15,400	110
120	50.7	136.5	12,100	53.9	134.8	12,600	56.9	130.8	13,100	120
130	46.2	127.1	10,300	49.3	125.1	10,800	52.2	120.9	11,200	130
140	41.2	115.9	8,800	44.3	113.8	9,200	46.9	109.0	9,500	140
150	35.7	102.4	7,500	38.6	100.0	7,800				150
160	29.1	85.4	6,400	31.9	82.5	6,600				160
170	20.7	61.9	5,300							170



Liftcrane Jib Capacities

Jib No. 134 With 12 Ft. 6 in. Strut On
Boom No. 84 With Open Throat Top
71,500 Lb. Counterweight
360 Degree Rating

Meets
ANSI B30.5
Requirements



555 SERIES 1

60 Ft. Fixed Jib

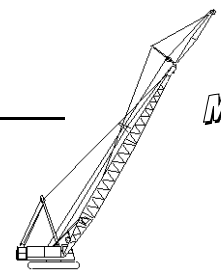
Jib Oper. Rad. Feet	5 Degree Offset			15 Degree Offset			25 Degree Offset			Jib Oper. Rad. Feet
	Boom Ang. Deg.	Jib Point Elev. Feet	Jib Capacity Pounds	Boom Ang. Deg.	Jib Point Elev. Feet	Jib Capacity Pounds	Boom Ang. Deg.	Jib Point Elev. Feet	Jib Capacity Pounds	
120 Ft. Boom										
45	79.5	185.1	30,000 *							45
50	77.9	184.0	30,000 *							50
55	76.3	182.7	30,000 *	79.5	181.3	28,200*				55
60	74.6	181.2	30,000 *	77.9	179.8	27,600*				60
65	73.0	179.6	29,500 *	76.2	178.1	27,100*	79.6	175.0	24,900*	65
70	71.3	177.8	29,000 *	74.6	176.3	26,600*	77.9	173.1	24,500*	70
75	69.7	175.8	26,100	72.9	174.4	26,200*	76.1	171.1	24,200*	75
80	68.0	173.7	23,600	71.2	172.2	24,700	74.4	168.9	23,700*	80
85	66.2	171.4	21,500	69.4	169.9	22,400	72.6	166.6	22,800*	85
90	64.5	168.9	19,600	67.7	167.4	20,500	70.8	164.0	21,300	90
100	60.9	163.4	16,400	64.0	161.8	17,200	67.1	158.3	17,900	100
110	57.2	156.9	13,800	60.3	155.3	14,500	63.3	151.6	15,100	110
120	53.3	149.5	11,700	56.4	147.8	12,300	59.2	143.9	12,800	120
130	49.2	141.0	10,000	52.2	139.1	10,400	54.9	135.0	10,900	130
140	44.8	131.1	8,500	47.7	129.0	8,900	50.3	124.6	9,200	140
150	40.0	119.4	7,200	42.8	117.2	7,500	45.2	112.2	7,800	150
160	34.6	105.4	6,000	37.3	102.8	6,300				160
170	28.3	87.8	5,000							170
130 Ft. Boom										
45	80.0	195.4	30,000 *							45
50	78.5	194.3	30,000 *							50
55	77.0	193.0	30,000 *	80.1	191.6	28,400*				55
60	75.5	191.6	30,000 *	78.5	190.2	27,900*				60
65	73.9	190.1	29,800 *	77.0	188.6	27,400*	80.1	185.4	25,000*	65
70	72.3	188.4	28,700	75.4	186.9	26,900*	78.5	183.7	24,700*	70
75	70.8	186.6	25,800	73.8	185.1	26,400*	76.9	181.8	24,300*	75
80	69.2	184.6	23,300	72.2	183.1	24,400	75.3	179.7	24,000*	80
85	67.6	182.4	21,200	70.6	180.9	22,200	73.6	177.5	23,200	85
90	65.9	180.1	19,300	68.9	178.6	20,200	71.9	175.1	21,100	90
100	62.6	174.9	16,100	65.6	173.3	16,900	68.5	169.8	17,700	100
110	59.1	168.9	13,500	62.1	167.3	14,200	64.9	163.6	14,900	110
120	55.5	162.1	11,400	58.4	160.4	12,000	61.2	156.5	12,600	120
130	51.8	154.3	9,700	54.6	152.4	10,200	57.3	148.4	10,700	130
140	47.8	145.3	8,100	50.6	143.3	8,600	53.1	139.0	9,000	140
150	43.5	134.9	6,800	46.3	132.8	7,200	48.6	128.1	7,600	150
160	38.9	122.8	5,700	41.5	120.4	6,000	43.7	115.2	6,300	160
170	33.6	108.2	4,700	36.2	105.6	4,900				170



Liftcrane Jib Capacities

Jib No. 134 With 12 Ft. 6 in. Strut On
Boom No. 84 With Open Throat Top
71,500 Lb. Counterweight
360 Degree Rating

Meets
ANSI B30.5
Requirements



555 SERIES 1

60 Ft. Fixed Jib

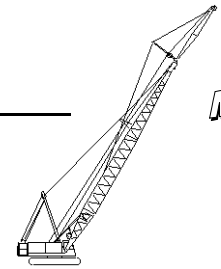
Jib Oper. Rad. Feet	5 Degree Offset			15 Degree Offset			25 Degree Offset			Jib Oper. Rad. Feet
	Boom Ang. Deg.	Jib Point Elev. Feet	Jib Capacity Pounds	Boom Ang. Deg.	Jib Point Elev. Feet	Jib Capacity Pounds	Boom Ang. Deg.	Jib Point Elev. Feet	Jib Capacity Pounds	
140 Ft. Boom										
45	80.5	205.6	30,000 *							45
50	79.1	204.5	30,000 *							50
55	77.7	203.3	30,000 *	80.6	201.9	28,600*				55
60	76.2	202.0	30,000 *	79.1	200.5	28,000*				60
65	74.7	200.6	30,000 *	77.7	199.1	27,600*	80.7	195.8	25,200*	65
70	73.2	199.0	28,300	76.2	197.5	27,100*	79.1	194.2	24,800*	70
75	71.8	197.3	25,400	74.7	195.7	26,700*	77.6	192.4	24,500*	75
80	70.3	195.4	22,900	73.1	193.8	24,100	76.1	190.5	24,100*	80
85	68.7	193.3	20,800	71.6	191.8	21,800	74.5	188.4	22,900	85
90	67.2	191.2	18,900	70.1	189.6	19,900	72.9	186.1	20,900	90
100	64.1	186.3	15,700	66.9	184.7	16,500	69.7	181.1	17,400	100
110	60.8	180.7	13,100	63.6	179.0	13,900	66.4	175.3	14,600	110
120	57.5	174.3	11,000	60.3	172.6	11,700	62.9	168.8	12,300	120
130	54.0	167.1	9,200	56.7	165.3	9,800	59.3	161.3	10,400	130
140	50.4	158.9	7,700	53.0	157.0	8,200	55.5	152.7	8,700	140
150	46.5	149.5	6,400	49.1	147.4	6,900	51.5	142.9	7,300	150
160	42.3	138.7	5,300	44.9	136.5	5,700	47.1	131.6	6,000	160
170	37.8	126.1	4,300	40.3	123.6	4,600	42.3	118.2	4,800	170
150 Ft. Boom										
45	81.0	215.7	30,000 *							45
50	79.6	214.7	30,000 *							50
55	78.2	213.6	30,000 *							55
60	76.9	212.4	30,000 *	79.7	210.9	28,200*				60
65	75.5	211.0	30,000 *	78.3	209.5	27,800*				65
70	74.1	209.5	28,100	76.8	208.0	27,300*	79.7	204.6	24,900*	70
75	72.6	207.9	25,200	75.4	206.3	26,500	78.2	202.9	24,600*	75
80	71.2	206.1	22,700	74.0	204.5	23,900	76.8	201.1	24,300*	80
85	69.8	204.1	20,500	72.5	202.6	21,600	75.3	199.1	22,800	85
90	68.3	202.1	18,600	71.1	200.5	19,700	73.8	197.0	20,700	90
100	65.4	197.5	15,400	68.1	195.9	16,300	70.8	192.3	17,200	100
110	62.3	192.2	12,900	65.0	190.6	13,700	67.7	186.9	14,400	110
120	59.2	186.3	10,800	61.9	184.5	11,400	64.4	180.7	12,100	120
130	56.0	179.5	9,000	58.6	177.7	9,600	61.1	173.8	10,200	130
140	52.6	171.9	7,500	55.2	170.1	8,000	57.6	165.9	8,500	140
150	49.1	163.3	6,200	51.6	161.3	6,600	53.9	156.9	7,100	150
160	45.3	153.5	5,100	47.8	151.4	5,500	50.0	146.7	5,800	160
170	41.3	142.3	4,100	43.7	140.0	4,400	45.7	134.9	4,700	170



Liftcrane Jib Capacities

Jib No. 134 With 12 Ft. 6 in. Strut On
Boom No. 84 With Open Throat Top
71,500 Lb. Counterweight
360 Degree Rating

Meets
ANSI B30.5
Requirements



555 SERIES 1

60 Ft. Fixed Jib

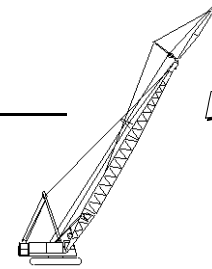
Jib Oper. Rad. Feet	5 Degree Offset			15 Degree Offset			25 Degree Offset			Jib Oper. Rad. Feet
	Boom Ang. Deg.	Jib Point Elev. Feet	Jib Capacity Pounds	Boom Ang. Deg.	Jib Point Elev. Feet	Jib Capacity Pounds	Boom Ang. Deg.	Jib Point Elev. Feet	Jib Capacity Pounds	
160 Ft. Boom										
50	80.1	225.0	30,000 *							50
55	78.8	223.9	30,000 *							55
60	77.5	222.7	30,000 *	80.1	221.2	28,400*				60
65	76.1	221.4	30,000 *	78.8	219.8	27,900*				65
70	74.8	220.0	27,700	77.5	218.4	27,500*	80.2	215.0	25,000*	70
75	73.5	218.4	24,800	76.1	216.8	26,200	78.8	213.4	24,700*	75
80	72.1	216.7	22,300	74.7	215.1	23,600	77.4	211.7	24,400*	80
85	70.7	214.9	20,200	73.4	213.3	21,400	76.0	209.8	22,500	85
90	69.4	212.9	18,300	72.0	211.3	19,400	74.6	207.8	20,500	90
100	66.6	208.6	15,100	69.2	206.9	16,000	71.7	203.3	17,000	100
110	63.7	203.6	12,500	66.3	201.9	13,300	68.8	198.2	14,200	110
120	60.8	198.0	10,400	63.3	196.3	11,100	65.8	192.5	11,800	120
130	57.7	191.7	8,600	60.2	189.9	9,300	62.6	186.0	9,900	130
140	54.6	184.6	7,100	57.1	182.7	7,700	59.4	178.6	8,200	140
150	51.3	176.6	5,800	53.7	174.7	6,300	56.0	170.4	6,800	150
160	47.8	167.7	4,700	50.2	165.6	5,100	52.4	161.0	5,500	160
170				46.5	155.3	4,100	48.6	150.4	4,400	170
170 Ft. Boom										
50	80.5	235.1	30,000 *							50
55	79.3	234.1	30,000 *							55
60	78.0	233.0	30,000 *	80.6	231.4	28,500*				60
65	76.7	231.7	30,000 *	79.3	230.2	28,100*				65
70	75.5	230.4	27,400	78.0	228.8	27,700*	80.6	225.4	25,100*	70
75	74.2	228.9	24,500	76.7	227.3	26,000	79.3	223.8	24,800*	75
80	72.9	227.3	22,000	75.4	225.7	23,400	78.0	222.2	24,500*	80
85	71.6	225.5	19,900	74.1	223.9	21,100	76.7	220.4	22,300	85
90	70.3	223.7	18,000	72.8	222.0	19,100	75.3	218.5	20,300	90
100	67.6	219.5	14,800	70.1	217.9	15,800	72.6	214.3	16,700	100
110	64.9	214.8	12,200	67.4	213.2	13,100	69.8	209.4	13,900	110
120	62.1	209.5	10,100	64.6	207.8	10,800	67.0	204.0	11,600	120
130	59.3	203.6	8,300	61.7	201.8	9,000	64.0	197.9	9,600	130
140	56.3	197.0	6,800	58.7	195.1	7,400	61.0	191.0	8,000	140
150	53.3	189.5	5,500	55.6	187.6	6,000	57.8	183.4	6,500	150
160	50.1	181.2	4,300	52.4	179.2	4,800	54.5	174.8	5,300	160
170							51.0	165.0	4,100	170



Liftcrane Jib Capacities

Jib No. 134 With 12 Ft. 6 in. Strut On
Boom No. 84 With Open Throat Top
71,500 Lb. Counterweight
360 Degree Rating

Meets
ANSI B30.5
Requirements



555 SERIES 1

70 Ft. Fixed Jib

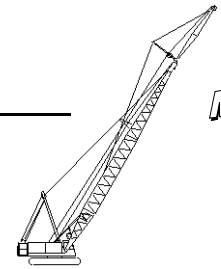
Jib Oper. Rad. Feet	5 Degree Offset			15 Degree Offset			25 Degree Offset			Jib Oper. Rad. Feet
	Boom Ang. Deg.	Jib Point Elev. Feet	Jib Capacity Pounds	Boom Ang. Deg.	Jib Point Elev. Feet	Jib Capacity Pounds	Boom Ang. Deg.	Jib Point Elev. Feet	Jib Capacity Pounds	
100 Ft. Boom										
40	80.4	176.0	26,700*							40
45	78.7	175.0	26,500*							45
50	77.0	173.7	26,000*							50
55	75.3	172.3	25,400*	79.4	171.0	23,400*				55
60	73.6	170.8	24,800*	77.6	169.5	23,000*				60
65	71.8	169.1	24,200*	75.8	167.7	22,500*	80.0	164.6	20,800*	65
70	70.0	167.2	23,700*	74.1	165.8	22,100*	78.2	162.6	20,400*	70
75	68.3	165.1	23,200*	72.3	163.7	21,600*	76.4	160.5	20,100*	75
80	66.4	162.8	22,700*	70.4	161.4	21,200*	74.5	158.2	19,700*	80
85	64.6	160.3	22,300*	68.6	158.9	20,800*	72.6	155.6	19,300*	85
90	62.7	157.7	20,400	66.7	156.2	20,400*	70.7	152.9	18,500*	90
100	58.9	151.7	17,200	62.8	150.2	18,000	66.7	146.7	17,100*	100
110	54.8	144.7	14,700	58.7	143.1	15,300	62.5	139.4	16,000*	110
120	50.6	136.6	12,600	54.4	134.9	13,100	58.1	131.0	13,700	120
130	46.0	127.1	10,800	49.8	125.3	11,300	53.3	121.1	11,700	130
140	41.1	116.0	9,300	44.8	114.0	9,700	48.1	109.2	10,100	140
150	35.5	102.5	8,000	39.1	100.2	8,300	42.1	94.7	8,600	150
160	29.0	85.5	6,800	32.4	82.8	7,100				160
170	20.6	62.1	5,800							170
110 Ft. Boom										
45	79.3	185.2	26,500*							45
50	77.7	184.0	26,200*							50
55	76.1	182.7	25,700*	80.0	181.4	23,600*				55
60	74.5	181.3	25,100*	78.3	179.9	23,200*				60
65	72.8	179.6	24,600*	76.7	178.3	22,700*	80.6	175.0	20,900*	65
70	71.2	177.9	24,100*	75.0	176.5	22,300*	78.9	173.2	20,600*	70
75	69.5	175.9	23,600*	73.3	174.5	21,900*	77.2	171.2	20,200*	75
80	67.8	173.8	23,100*	71.6	172.4	21,500*	75.5	169.0	19,900*	80
85	66.1	171.5	22,000	69.9	170.1	21,100*	73.7	166.7	19,500*	85
90	64.3	169.0	20,100	68.1	167.5	20,700*	71.9	164.1	19,000*	90
100	60.8	163.5	17,000	64.5	161.9	17,800	68.2	158.4	17,600*	100
110	57.1	157.0	14,400	60.7	155.4	15,100	64.4	151.7	15,800	110
120	53.2	149.6	12,300	56.8	148.0	12,900	60.3	144.0	13,500	120
130	49.1	141.1	10,600	52.6	139.3	11,100	56.0	135.1	11,600	130
140	44.7	131.1	9,100	48.2	129.2	9,500	51.4	124.7	9,900	140
150	39.9	119.5	7,800	43.3	117.4	8,100	46.3	112.3	8,500	150
160	34.5	105.5	6,600	37.8	103.1	6,900				160
170	28.2	87.9	5,600	31.3	85.0	5,800				170
180	20.0	63.7	4,700							180



Liftcrane Jib Capacities

Jib No. 134 With 12 Ft. 6 in. Strut On
Boom No. 84 With Open Throat Top
71,500 Lb. Counterweight
360 Degree Rating

Meets
ANSI B30.5
Requirements



555 SERIES 1

70 Ft. Fixed Jib

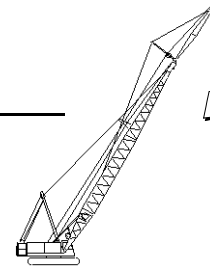
Jib Oper. Rad. Feet	5 Degree Offset			15 Degree Offset			25 Degree Offset			Jib Oper. Rad. Feet
	Boom Ang. Deg.	Jib Point Elev. Feet	Jib Capacity Pounds	Boom Ang. Deg.	Jib Point Elev. Feet	Jib Capacity Pounds	Boom Ang. Deg.	Jib Point Elev. Feet	Jib Capacity Pounds	
120 Ft. Boom										
45	79.9	195.4	26,600 *							45
50	78.4	194.3	26,400 *							50
55	76.9	193.1	25,900 *	80.5	191.7	23,800*				55
60	75.3	191.7	25,400 *	79.0	190.3	23,300*				60
65	73.8	190.2	24,900 *	77.4	188.8	22,900*				65
70	72.2	188.5	24,400 *	75.8	187.1	22,500*	79.6	183.7	20,700*	70
75	70.6	186.7	23,900 *	74.2	185.2	22,100*	77.9	181.9	20,400*	75
80	69.0	184.7	23,400 *	72.6	183.2	21,700*	76.3	179.8	20,000*	80
85	67.4	182.5	21,700	71.0	181.0	21,300*	74.6	177.6	19,700*	85
90	65.8	180.2	19,800	69.3	178.7	20,800	73.0	175.2	19,400*	90
100	62.4	175.0	16,600	66.0	173.5	17,500	69.5	169.8	18,100*	100
110	59.0	169.0	14,100	62.5	167.4	14,800	65.9	163.7	15,600	110
120	55.4	162.2	12,000	58.9	160.5	12,600	62.2	156.6	13,300	120
130	51.6	154.4	10,200	55.1	152.6	10,800	58.3	148.5	11,300	130
140	47.7	145.4	8,700	51.0	143.5	9,200	54.2	139.1	9,700	140
150	43.4	135.0	7,400	46.7	133.0	7,800	49.7	128.2	8,200	150
160	38.7	122.9	6,300	41.9	120.7	6,600	44.7	115.3	6,900	160
170	33.5	108.4	5,300	36.6	105.8	5,500				170
180	27.4	90.2	4,400	30.3	87.1	4,600				180
130 Ft. Boom										
45	80.4	205.6	26,700 *							45
50	79.0	204.6	26,500 *							50
55	77.5	203.4	26,200 *							55
60	76.1	202.1	25,600 *	79.5	200.7	23,500*				60
65	74.6	200.6	25,100 *	78.0	199.2	23,100*				65
70	73.1	199.1	24,700 *	76.5	197.6	22,700*	80.1	194.2	20,800*	70
75	71.6	197.3	24,200 *	75.0	195.9	22,300*	78.6	192.4	20,500*	75
80	70.1	195.4	23,500	73.5	194.0	21,900*	77.0	190.5	20,200*	80
85	68.6	193.4	21,300	72.0	191.9	21,600*	75.5	188.4	19,900*	85
90	67.1	191.2	19,400	70.4	189.7	20,500	73.9	186.1	19,600*	90
100	63.9	186.3	16,300	67.3	184.8	17,200	70.7	181.1	18,100	100
110	60.7	180.8	13,700	64.0	179.2	14,500	67.3	175.4	15,300	110
120	57.4	174.4	11,600	60.7	172.7	12,300	63.9	168.8	13,000	120
130	53.9	167.2	9,900	57.1	165.4	10,500	60.3	161.3	11,100	130
140	50.2	159.0	8,400	53.5	157.1	8,900	56.5	152.8	9,400	140
150	46.4	149.6	7,100	49.5	147.6	7,500	52.5	143.0	8,000	150
160	42.2	138.8	5,900	45.3	136.7	6,300	48.1	131.6	6,700	160
170	37.7	126.2	4,900	40.7	123.8	5,300	43.3	118.2	5,600	170
180	32.6	111.2	4,000	35.5	108.5	4,300				180



Liftcrane Jib Capacities

Jib No. 134 With 12 Ft. 6 in. Strut On
 Boom No. 84 With Open Throat Top
 71,500 Lb. Counterweight
 360 Degree Rating

Meets
 ANSI B30.5
 Requirements



555 SERIES 1

70 Ft. Fixed Jib

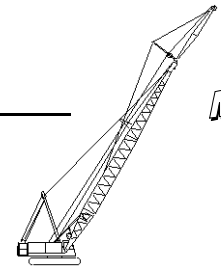
Jib Oper. Rad. Feet	5 Degree Offset			15 Degree Offset			25 Degree Offset			Jib Oper. Rad. Feet
	Boom Ang. Deg.	Jib Point Elev. Feet	Jib Capacity Pounds	Boom Ang. Deg.	Jib Point Elev. Feet	Jib Capacity Pounds	Boom Ang. Deg.	Jib Point Elev. Feet	Jib Capacity Pounds	
140 Ft. Boom										
45	80.9	215.8	26,700 *							45
50	79.5	214.8	26,600 *							50
55	78.1	213.7	26,400 *							55
60	76.7	212.4	25,900 *	80.0	211.0	23,600*				60
65	75.3	211.1	25,400 *	78.6	209.6	23,200*				65
70	73.9	209.6	24,900 *	77.2	208.1	22,900*	80.6	204.6	20,900*	70
75	72.5	207.9	24,500 *	75.8	206.4	22,500*	79.2	202.9	20,600*	75
80	71.1	206.1	23,100	74.3	204.6	22,100*	77.7	201.1	20,300*	80
85	69.7	204.2	20,900	72.9	202.7	21,800*	76.2	199.1	20,000*	85
90	68.2	202.1	19,100	71.4	200.6	20,200	74.7	197.0	19,700*	90
100	65.2	197.6	15,900	68.5	196.0	16,900	71.7	192.3	17,900	100
110	62.2	192.3	13,300	65.4	190.7	14,200	68.6	186.9	15,100	110
120	59.1	186.4	11,200	62.2	184.7	12,000	65.3	180.7	12,700	120
130	55.8	179.6	9,500	59.0	177.9	10,100	62.0	173.8	10,800	130
140	52.5	172.0	8,000	55.6	170.2	8,500	58.5	165.9	9,100	140
150	48.9	163.4	6,700	52.0	161.5	7,200	54.8	157.0	7,700	150
160	45.2	153.6	5,500	48.2	151.6	6,000	50.9	146.7	6,400	160
170	41.1	142.4	4,500	44.1	140.2	4,900	46.6	134.9	5,300	170
180				39.6	127.0	4,000	41.9	121.1	4,200	180
150 Ft. Boom										
50	80.0	225.0	26,600 *							50
55	78.7	224.0	26,500 *							55
60	77.3	222.8	26,100 *							60
65	76.0	221.5	25,600 *	80.5	221.3	23,800*				65
70	74.7	220.0	25,200 *	79.2	220.0	23,400*				70
75	73.3	218.5	24,700 *	77.8	218.5	23,000*				75
80	72.0	216.8	22,800	76.5	216.9	22,700*	79.7	213.4	20,700*	80
85	70.6	214.9	20,700	75.1	215.2	22,300*	78.3	211.7	20,400*	85
90	69.2	213.0	18,800	73.7	213.4	22,000*	76.9	209.8	20,100*	90
100	66.4	208.6	15,600	72.3	211.4	20,000	75.5	207.8	19,900*	100
110	63.6	203.7	13,100	69.5	207.0	16,600	72.6	203.3	17,700	110
120	60.6	198.1	11,000	66.6	202.0	14,000	69.7	198.2	14,900	120
130	57.6	191.8	9,200	63.7	196.4	11,800	66.6	192.5	12,600	130
140	54.5	184.7	7,700	60.6	190.0	9,900	63.5	185.9	10,600	140
150	51.2	176.7	6,400	57.4	182.9	8,300	60.3	178.6	8,900	150
160	47.7	167.8	5,300	54.1	174.8	7,000	56.9	170.4	7,500	160
170	44.1	157.6	4,300	50.6	165.8	5,800	53.3	161.0	6,200	170
180				46.9	155.5	4,700	49.4	150.4	5,100	180
180							45.3	138.2	4,100	180



Liftcrane Jib Capacities

Jib No. 134 With 12 Ft. 6 in. Strut On
Boom No. 84 With Open Throat Top
71,500 Lb. Counterweight
360 Degree Rating

Meets
ANSI B30.5
Requirements



555 SERIES 1

70 Ft. Fixed Jib

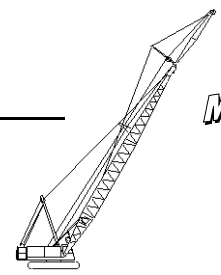
Jib Oper. Rad. Feet	5 Degree Offset			15 Degree Offset			25 Degree Offset			Jib Oper. Rad. Feet
	Boom Ang. Deg.	Jib Point Elev. Feet	Jib Capacity Pounds	Boom Ang. Deg.	Jib Point Elev. Feet	Jib Capacity Pounds	Boom Ang. Deg.	Jib Point Elev. Feet	Jib Capacity Pounds	
160 Ft. Boom										
50	80.4	235.2	26,700 *							50
55	79.1	234.2	26,500 *							55
60	77.9	233.1	26,300 *							60
65	76.6	231.8	25,900 *	79.6	230.3	23,500*				65
70	75.4	230.4	25,400 *	78.4	228.9	23,200*				70
75	74.1	229.0	25,000 *	77.1	227.4	22,800*	80.1	223.8	20,800*	75
80	72.8	227.3	22,500	75.8	225.8	22,500*	78.8	222.1	20,500*	80
85	71.5	225.6	20,300	74.5	224.0	21,700	77.5	220.4	20,300*	85
90	70.2	223.7	18,400	73.1	222.2	19,700	76.2	218.5	20,000*	90
100	67.5	219.6	15,300	70.5	218.0	16,300	73.4	214.2	17,500	100
110	64.8	214.9	12,700	67.7	213.3	13,700	70.6	209.4	14,600	110
120	62.0	209.6	10,600	64.9	207.9	11,400	67.8	204.0	12,300	120
130	59.2	203.7	8,800	62.0	201.9	9,600	64.8	197.9	10,300	130
140	56.2	197.0	7,300	59.1	195.2	8,000	61.8	191.0	8,600	140
150	53.2	189.6	6,000	56.0	187.7	6,600	58.6	183.3	7,200	150
160	50.0	181.3	4,900	52.8	179.3	5,400	55.3	174.7	5,900	160
170				49.4	169.9	4,400	51.8	165.0	4,800	170



Liftcrane Jib Capacities

Jib No. 134 With 12 Ft. 6 in. Strut On
Boom No. 84 With Open Throat Top
71,500 Lb. Counterweight
360 Degree Rating

Meets
ANSI B30.5
Requirements



555 SERIES 1

80 Ft. Fixed Jib

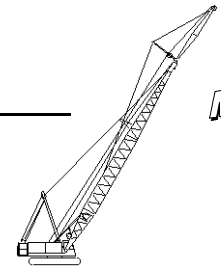
Jib Oper. Rad. Feet	5 Degree Offset			15 Degree Offset			25 Degree Offset			Jib Oper. Rad. Feet
	Boom Ang. Deg.	Jib Point Elev. Feet	Jib Capacity Pounds	Boom Ang. Deg.	Jib Point Elev. Feet	Jib Capacity Pounds	Boom Ang. Deg.	Jib Point Elev. Feet	Jib Capacity Pounds	
100 Ft. Boom										
40	80.6	186.3	20,200 *							40
45	79.0	185.3	20,100 *							45
50	77.4	184.1	19,900 *							50
55	75.7	182.8	19,700 *	80.2	181.6	19,300*				55
60	74.1	181.3	19,600 *	78.5	180.1	19,100*				60
65	72.5	179.7	19,400 *	76.9	178.5	18,900*				65
70	70.8	177.9	19,300 *	75.2	176.7	18,500*	79.8	173.5	17,100*	70
75	69.1	176.0	19,200 *	73.5	174.7	18,100*	78.1	171.5	16,800*	75
80	67.4	173.9	19,100 *	71.8	172.6	17,800*	76.3	169.4	16,400*	80
85	65.7	171.6	18,700 *	70.1	170.3	17,400*	74.6	167.0	16,100*	85
90	64.0	169.1	18,300 *	68.3	167.8	17,000*	72.8	164.4	15,800*	90
100	60.4	163.5	17,200	64.7	162.2	16,300*	69.1	158.7	15,200*	100
110	56.7	157.1	14,700	61.0	155.7	15,400	65.3	152.1	14,300*	110
120	52.8	149.7	12,600	57.0	148.2	13,300	61.2	144.4	13,300*	120
130	48.7	141.2	10,900	52.9	139.6	11,400	57.0	135.5	12,000	130
140	44.3	131.2	9,400	48.4	129.5	9,900	52.4	125.1	10,300	140
150	39.5	119.6	8,100	43.6	117.7	8,500	47.3	112.8	8,900	150
160	34.1	105.6	6,900	38.1	103.4	7,300	41.5	97.8	7,600	160
170	27.8	88.1	5,900	31.6	85.4	6,200				170
180	19.6	63.9	5,000							180
110 Ft. Boom										
45	79.5	195.5	20,100 *							45
50	78.0	194.4	20,000 *							50
55	76.5	193.2	19,800 *	80.7	191.9	19,300*				55
60	75.0	191.8	19,700 *	79.2	190.5	19,200*				60
65	73.4	190.2	19,500 *	77.6	189.0	19,100*				65
70	71.9	188.6	19,400 *	76.0	187.3	18,700*	80.4	184.0	17,200*	70
75	70.3	186.7	19,300 *	74.4	185.4	18,400*	78.8	182.1	16,900*	75
80	68.7	184.7	19,100 *	72.8	183.4	18,000*	77.1	180.1	16,600*	80
85	67.1	182.6	19,000 *	71.2	181.3	17,600*	75.5	177.9	16,200*	85
90	65.4	180.3	18,600 *	69.6	178.9	17,300*	73.8	175.5	15,900*	90
100	62.1	175.1	17,000	66.2	173.7	16,600*	70.4	170.1	15,400*	100
110	58.6	169.1	14,400	62.7	167.7	15,200	66.8	164.0	14,700*	110
120	55.1	162.3	12,400	59.1	160.8	13,000	63.1	156.9	13,700*	120
130	51.3	154.4	10,600	55.3	152.9	11,200	59.2	148.8	11,800	130
140	47.3	145.5	9,100	51.3	143.8	9,600	55.0	139.5	10,200	140
150	43.1	135.1	7,800	46.9	133.3	8,300	50.6	128.6	8,700	150
160	38.4	123.0	6,700	42.2	121.0	7,100	45.6	115.8	7,400	160
170	33.2	108.5	5,700	36.9	106.2	6,000	40.0	100.2	6,300	170
180	27.0	90.4	4,800	30.6	87.6	5,100				180
190	19.1	65.5	4,000							190



Liftcrane Jib Capacities

Jib No. 134 With 12 Ft. 6 in. Strut On
Boom No. 84 With Open Throat Top
71,500 Lb. Counterweight
360 Degree Rating

Meets
ANSI B30.5
Requirements



555 SERIES 1

80 Ft. Fixed Jib

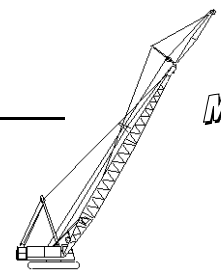
Jib Oper. Rad. Feet	5 Degree Offset			15 Degree Offset			25 Degree Offset			Jib Oper. Rad. Feet
	Boom Ang. Deg.	Jib Point Elev. Feet	Jib Capacity Pounds	Boom Ang. Deg.	Jib Point Elev. Feet	Jib Capacity Pounds	Boom Ang. Deg.	Jib Point Elev. Feet	Jib Capacity Pounds	
120 Ft. Boom										
45	80.1	205.7	20,200 *							45
50	78.6	204.7	20,000 *							50
55	77.2	203.5	19,900 *							55
60	75.7	202.2	19,700 *	79.7	200.9	19,200*				60
65	74.3	200.7	19,600 *	78.2	199.4	19,100*				65
70	72.8	199.1	19,500 *	76.7	197.8	18,900*				70
75	71.3	197.4	19,400 *	75.2	196.1	18,600*	79.4	192.7	17,000*	75
80	69.8	195.5	19,200 *	73.7	194.2	18,200*	77.8	190.8	16,700*	80
85	68.3	193.5	19,100 *	72.2	192.1	17,800*	76.3	188.7	16,400*	85
90	66.7	191.3	19,000 *	70.6	189.9	17,500*	74.7	186.4	16,100*	90
100	63.6	186.4	16,600	67.5	185.0	16,900*	71.5	181.4	15,500*	100
110	60.4	180.8	14,100	64.2	179.4	14,900	68.1	175.7	15,000*	110
120	57.0	174.5	12,000	60.9	173.0	12,700	64.7	169.1	13,500	120
130	53.6	167.3	10,200	57.4	165.7	10,900	61.1	161.6	11,600	130
140	49.9	159.0	8,700	53.7	157.4	9,300	57.3	153.1	9,900	140
150	46.0	149.7	7,400	49.8	147.9	7,900	53.3	143.3	8,400	150
160	41.9	138.9	6,300	45.6	137.0	6,800	48.9	132.0	7,200	160
170	37.4	126.3	5,300	41.0	124.2	5,700	44.1	118.7	6,000	170
180	32.3	111.3	4,400	35.8	108.9	4,700				180
130 Ft. Boom										
45	80.5	215.9	20,300 *							45
50	79.2	214.9	20,100 *							50
55	77.8	213.8	20,000 *							55
60	76.4	212.5	19,800 *	80.2	211.2	19,300*				60
65	75.0	211.1	19,700 *	78.8	209.8	19,200*				65
70	73.6	209.6	19,600 *	77.4	208.3	19,100*				70
75	72.2	208.0	19,400 *	76.0	206.6	18,700*	79.9	203.2	17,100*	75
80	70.8	206.2	19,300 *	74.5	204.8	18,400*	78.4	201.3	16,800*	80
85	69.3	204.3	19,200 *	73.1	202.9	18,000*	77.0	199.4	16,500*	85
90	67.9	202.2	19,100 *	71.6	200.8	17,700*	75.5	197.3	16,200*	90
100	64.9	197.6	16,300	68.7	196.2	17,100*	72.4	192.5	15,700*	100
110	61.9	192.4	13,700	65.6	190.9	14,600	69.3	187.1	15,200*	110
120	58.8	186.4	11,600	62.4	184.9	12,400	66.1	181.0	13,300	120
130	55.5	179.7	9,900	59.2	178.1	10,600	62.8	174.1	11,300	130
140	52.2	172.1	8,400	55.8	170.5	9,000	59.3	166.2	9,600	140
150	48.6	163.5	7,100	52.2	161.8	7,700	55.6	157.3	8,200	150
160	44.9	153.7	6,000	48.4	151.9	6,500	51.7	147.1	6,900	160
170	40.8	142.5	5,000	44.3	140.5	5,400	47.4	135.3	5,800	170
180	36.4	129.5	4,100	39.8	127.3	4,500	42.8	121.5	4,800	180



Liftcrane Jib Capacities

Jib No. 134 With 12 Ft. 6 in. Strut On
Boom No. 84 With Open Throat Top
71,500 Lb. Counterweight
360 Degree Rating

Meets
ANSI B30.5
Requirements



555 SERIES 1

80 Ft. Fixed Jib

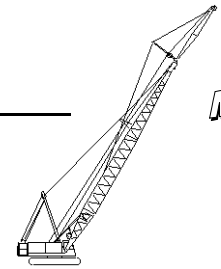
Jib Oper. Rad. Feet	5 Degree Offset			15 Degree Offset			25 Degree Offset			Jib Oper. Rad. Feet
	Boom Ang. Deg.	Jib Point Elev. Feet	Jib Capacity Pounds	Boom Ang. Deg.	Jib Point Elev. Feet	Jib Capacity Pounds	Boom Ang. Deg.	Jib Point Elev. Feet	Jib Capacity Pounds	
140 Ft. Boom										
50	79.7	225.1	20,200 *							50
55	78.3	224.0	20,000 *							55
60	77.0	222.8	19,900 *	80.7	221.5	19,300*				60
65	75.7	221.5	19,800 *	79.3	220.2	19,200*				65
70	74.4	220.1	19,600 *	78.0	218.7	19,100*				70
75	73.0	218.5	19,500 *	76.6	217.2	18,900*	80.4	213.6	17,200*	75
80	71.7	216.8	19,400 *	75.3	215.4	18,600*	79.0	211.9	16,900*	80
85	70.3	215.0	19,300 *	73.9	213.6	18,200*	77.6	210.0	16,600*	85
90	68.9	213.1	19,000	72.5	211.6	17,900*	76.2	208.0	16,400*	90
100	66.1	208.7	15,900	69.7	207.3	17,000	73.3	203.5	15,900*	100
110	63.3	203.8	13,300	66.8	202.3	14,300	70.4	198.4	15,300	110
120	60.3	198.2	11,200	63.8	196.6	12,100	67.4	192.7	13,000	120
130	57.3	191.9	9,500	60.8	190.3	10,200	64.2	186.2	11,000	130
140	54.2	184.8	8,000	57.6	183.1	8,700	61.0	178.9	9,300	140
150	50.9	176.8	6,700	54.3	175.1	7,300	57.6	170.6	7,900	150
160	47.4	167.9	5,600	50.8	166.0	6,100	54.0	161.3	6,600	160
170	43.8	157.7	4,600	47.1	155.8	5,000	50.2	150.7	5,500	170
180				43.1	144.0	4,100	46.1	138.5	4,500	180
150 Ft. Boom										
50	80.1	235.3	20,200 *							50
55	78.9	234.3	20,100 *							55
60	77.6	233.1	19,900 *							60
65	76.3	231.9	19,800 *	79.8	230.5	19,200*				65
70	75.1	230.5	19,700 *	78.5	229.1	19,100*				70
75	73.8	229.0	19,600 *	77.2	227.6	19,000*				75
80	72.5	227.4	19,500 *	75.9	226.0	18,700*	79.5	222.4	17,000*	80
85	71.2	225.7	19,300 *	74.6	224.2	18,400*	78.2	220.6	16,800*	85
90	69.9	223.8	18,700	73.3	222.4	18,100*	76.8	218.7	16,500*	90
100	67.2	219.7	15,600	70.6	218.2	16,700	74.1	214.4	16,000*	100
110	64.5	215.0	13,000	67.9	213.5	14,100	71.3	209.6	15,100	110
120	61.7	209.7	10,900	65.1	208.2	11,900	68.5	204.2	12,800	120
130	58.9	203.8	9,200	62.2	202.2	10,000	65.5	198.1	10,800	130
140	55.9	197.1	7,700	59.3	195.5	8,400	62.5	191.2	9,100	140
150	52.9	189.7	6,400	56.2	188.0	7,100	59.3	183.6	7,700	150
160	49.7	181.4	5,300	52.9	179.6	5,900	56.0	175.0	6,400	160
170	46.3	172.1	4,300	49.6	170.2	4,800	52.5	165.3	5,300	170
180							48.8	154.3	4,300	180



Liftcrane Jib Capacities

Jib No. 134 With 12 Ft. 6 in. Strut On
Boom No. 84 With Open Throat Top
71,500 Lb. Counterweight
360 Degree Rating

Meets
ANSI B30.5
Requirements



555 SERIES 1

80 Ft. Fixed Jib

Jib Oper. Rad. Feet	5 Degree Offset			15 Degree Offset			25 Degree Offset			Jib Oper. Rad. Feet
	Boom Ang. Deg.	Jib Point Elev. Feet	Jib Capacity Pounds	Boom Ang. Deg.	Jib Point Elev. Feet	Jib Capacity Pounds	Boom Ang. Deg.	Jib Point Elev. Feet	Jib Capacity Pounds	
160 Ft. Boom										
50	80.5	245.5	20,300 *							50
55	79.3	244.5	20,100 *							55
60	78.1	243.4	20,000 *							60
65	76.9	242.2	19,900 *	80.2	240.8	19,300*				65
70	75.7	240.9	19,800 *	79.0	239.5	19,200*				70
75	74.5	239.5	19,600 *	77.8	238.0	19,100*				75
80	73.2	237.9	19,500 *	76.5	236.5	18,900*	80.0	232.8	17,100*	80
85	72.0	236.3	19,400 *	75.3	234.8	18,600*	78.7	231.1	16,900*	85
90	70.7	234.5	18,400	74.0	233.0	18,300*	77.4	229.3	16,600*	90
100	68.2	230.6	15,200	71.5	229.1	16,400	74.8	225.2	16,100*	100
110	65.6	226.1	12,700	68.9	224.6	13,800	72.2	220.7	14,900	110
120	63.0	221.1	10,600	66.2	219.5	11,500	69.5	215.5	12,500	120
130	60.3	215.5	8,800	63.5	213.9	9,700	66.7	209.8	10,600	130
140	57.5	209.2	7,300	60.7	207.6	8,100	63.9	203.3	8,900	140
150	54.7	202.3	6,000	57.8	200.5	6,700	60.9	196.2	7,400	150
160	51.7	194.5	4,900	54.8	192.7	5,500	57.8	188.1	6,100	160
170				51.7	184.0	4,500	54.6	179.2	5,000	170
180							51.2	169.1	4,000	180