

# Igo 10 and Igo 11

**POTAIN** 

**Compact for tight job sites**

**Characteristics:**

**Max. load 1300 kg**

**Load at jib nose 650 kg at 18 m\***

**Under hook height 16 m**

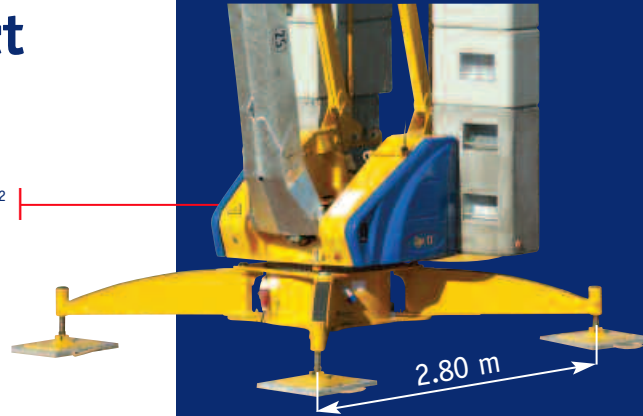
*\*16 m for the Igo 10*



# The Igo 10 and Igo 11, for tight job sites

## The compact machine

- Footprint of only 2.80 m<sup>2</sup>
- Slewing radius of 1.6 m



## A Optima hoisting winch for increased performance

- A choice of mains supply
  - 230 V single-phase (cheaper and more available)
  - 400 V three-phase
- Low power consumption
- Only speeds change depending on available power, the load curve remains constant



## A choice of two radio-controls

- A push-button box for one hand
- A compact radio control with control switches, delivered with belt
- Both are equipped with a frequency convertor



**Manitowoc**  
Crane CARE



[www.manitowoccrane.com](http://www.manitowoccrane.com)

### Manitowoc Crane Group - Americas - World Headquarters

2044 40th Street • Manitowoc • WI 54220 USA  
Tel: +1 920 684 6621 • Fax: +1 920 683 6277

### Manitowoc Crane Group - Europe, Middle East & Africa

Potain S.A.S. • 18, rue de Charbonnières B.P. 173 • 69132 ECULLY Cedex • FRANCE  
Tel: +33 (0)4 72 18 20 20 • Fax: +33 (0)4 72 18 20 00

### Manitowoc Crane Group - Asia & Pacific

4 Kwong Rd. SINGAPORE 628707 • SINGAPORE  
Tel: +65 62 64 11 88 • Fax: +65 6862 4040

[www.manitowoccrane.com](http://www.manitowoccrane.com) - [www.potain.com](http://www.potain.com)