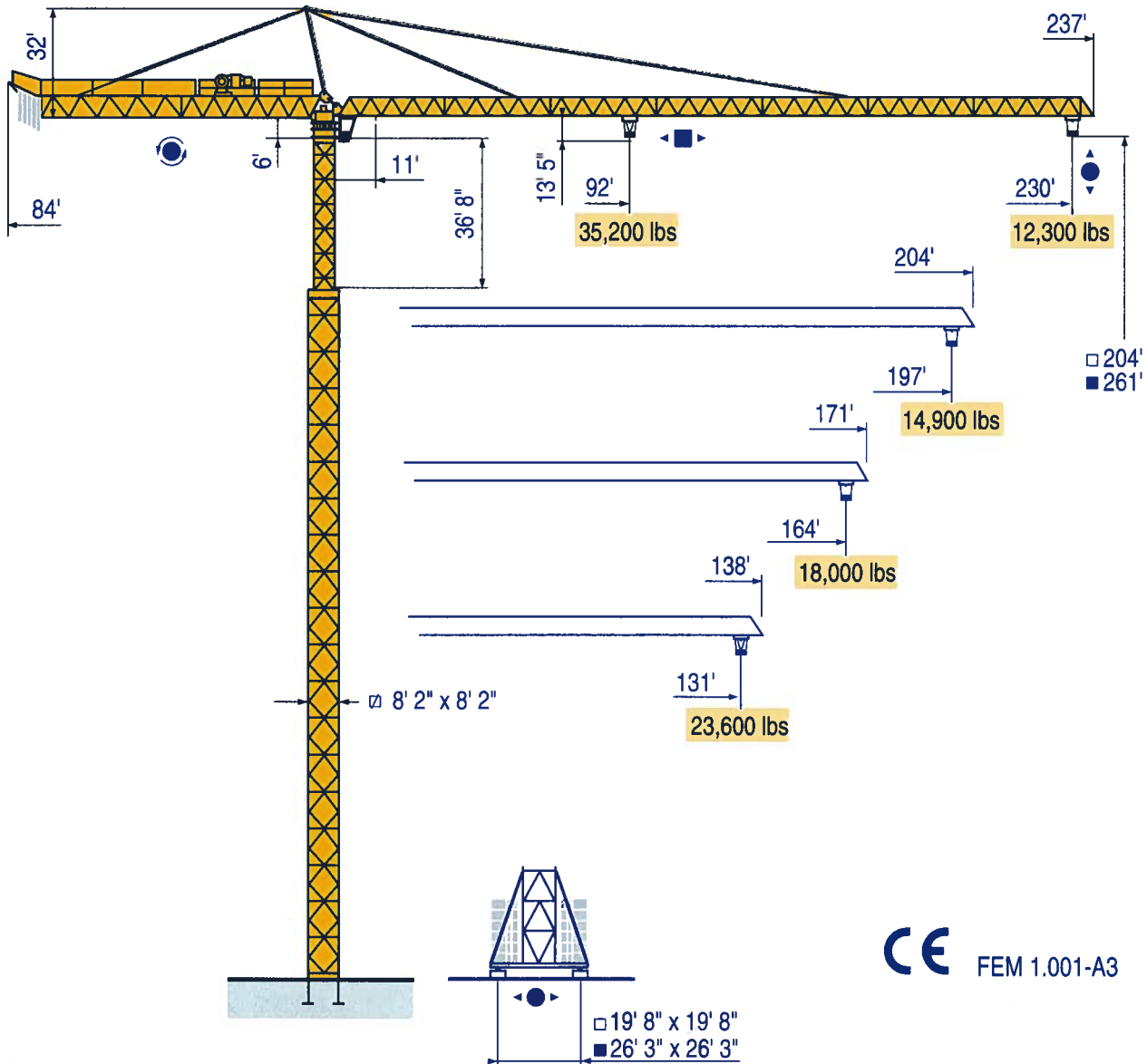


TOPKIT K4/56 C / US



HD



HDT



GTMR



CITY CRANE



TOPKIT MD
MAXI MD



MAXI TOPKIT



Topless MDT



MR



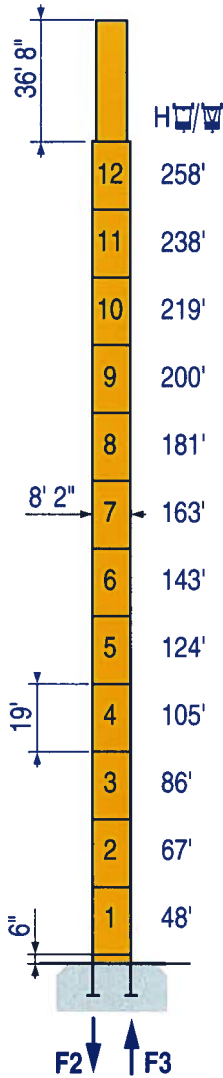
CE FEM 1.001-A3

LQU 1



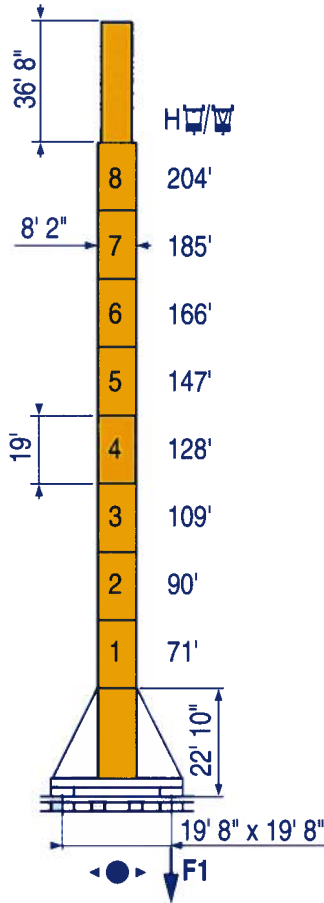
POTAIN

Masts / Reactions



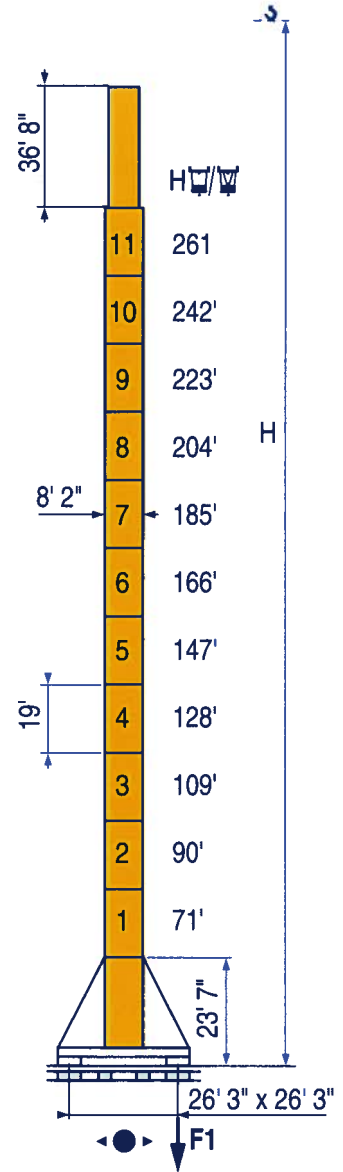
PA 852

F2	● 404,000	■ 440,000	lbs
F3	● 253,000	■ 300,000	lbs
▲	255,000		lbs



XA 850

F1	● 255,000	■ 211,000	lbs
▲	266,000		lbs



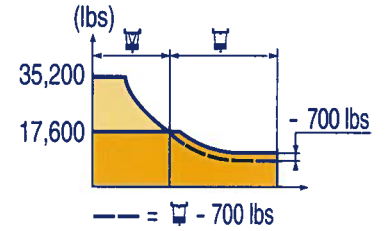
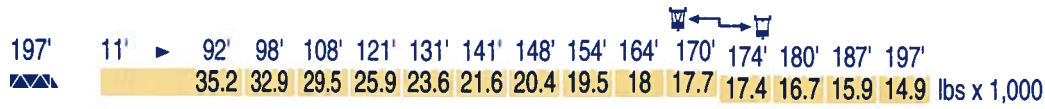
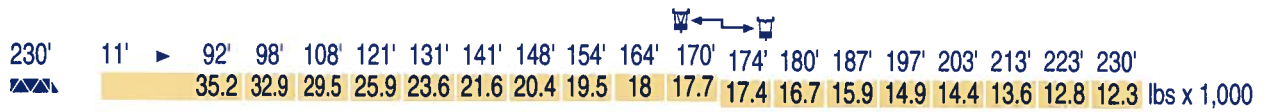
YA 851

F1	● 233,000	■ 242,000	lbs
▲	300,000		lbs

LQU 1

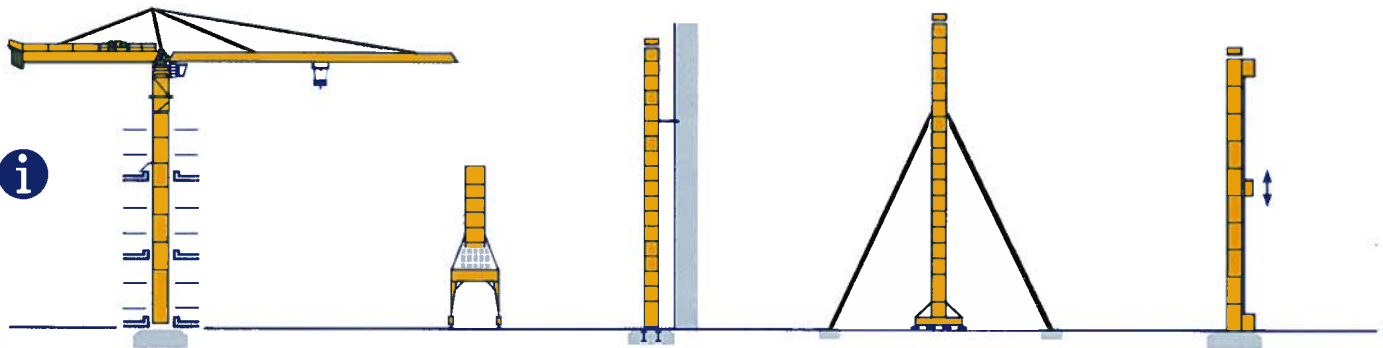
- Reactions in service
- Reactions out of service
- ▲ Without load, ballast (or transport axes), with maximum jib and maximum height.

Load diagrams



LQU 1





















Mounting possibilities



LQU 1

i Consult us

Mechanisms

								hp	kw		
											
	55 RCS 40	fpm	0 → 98	0 → 196	-	0 → 49	0 → 98	-	66	49	1,535' > 1,535' 
		lbs	17,600	8,800	-	35,200	17,600	-			
	120 LMD 40 S	fpm ▲	0 → 190	0 → 380	-	0 → 95	0 → 190	-	144	106	1,946' > 1,946' 
		fpm ▼	0 → 158	0 → 316	0 → 632	0 → 79	0 → 158	0 → 316			
		lbs	17,600	8,800	4,400	35,200	17,600	8,800			
	15 DRC 8	fpm	0 - 13 → 167 - 334						16.8	12.4	
	RTV	rpm	0 → 0.85						2 x 14.7	2 x 10.8	
	XA 850 RT 664 A2B - 2V	fpm	63 - 126						6 x 8.4	6 x 12	
	TCV 669 ARC H ≤ 128'	rpm	39 - 195						6 x 8.2	6 x 6	
	YA 851 RT 664 A2B - 2V	fpm	63 - 126						6 x 8.4	6 x 6.2	
	TCV 669 ARC H ≤ 128'	fpm	39 - 195						6 x 8.2	6 x 6	
CEI 38 		IEC 38					kVA				
480 V (+6% -10%) 60 Hz							55 RCS 40 : 110 kVA 120 LMD 40 S : 180 kVA				

LQU 1

-  Hoisting
-  Trolleying
-  Slewing
-  Travelling
-  Consult us

POTAIN 
 GROUPE LEGRIS INDUSTRIES

18.Rue de Charbonnières, B.P. 173
 F-69132 ECULLY Cedex
 Tél. (33)04.72.18.20.20
 Fax (33)04.72.18.20.00
 http://www.potain.com
 E-mail : mkt@potain.fr

TOPKIT K4/56 C / us

Copyright.Reproduction interdite © POTAIN 1999

Deutschland
 POTAIN GmbH Tel : 06.105.704.0
Italia
 POTAIN S.p.A. Tel : 039.65.631
Singapore
 POTAIN PTE LTD Tel : (00.65) 227.1550

Réf. 1999.03 LQU 1

Subject to modification

Printed in France

Réalisation SODIPE