

Imagine ...  
the answer to narrow areas

## The new MR 295

- Max load: 16 t, 20 t, 25 t
- Jib length from 30 m to 60 m
- Load at jib nose: 2.8 t
- Mast: 2 m
- Under hook height: 52.6 m
- Mechanisms with frequency variation

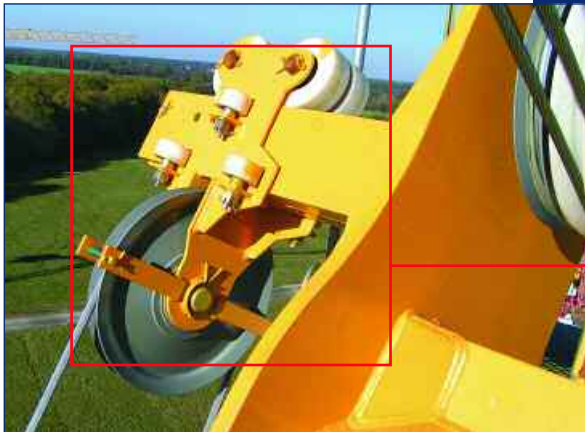
# MR 295

... patented systems  
for fast and secure erection

Fast erection—with fish  
joint at the jib foot



Fleeting pulley without maintenance



Fast erection of the temporary tie bars and the luffing  
tie bars thanks to a standard auxiliary which.



Maximum weight of one  
erection unit : 10.8 t only

And... transport  
of the complete  
slewing part with 5  
HC40' containers

**Manitowoc**  
Crane CARE



[www.manitowoccrane.com](http://www.manitowoccrane.com)

**Manitowoc Crane Group - Americas - World Headquarters**

2044 40th Street • Manitowoc • WI 54220 USA

Tel: +1 920 684 6621 • Fax: +1 920 683 6277

**Manitowoc Crane Group - Europe, Middle East & Africa**

Potain S.A.S. • 18, rue de Charbonnières B.P. 173 • 69132 ECULLY Cedex • FRANCE

Tel: +33 (0)4 72 18 20 20 • Fax: +33 (0)4 72 18 20 00

**Manitowoc Crane Group - Asia & Pacific**

4 Kwong Rd. SINGAPORE 628707 • SINGAPORE

Tel: +65 62 64 11 88 • Fax: +65 6862 4040

[www.manitowoccrane.com](http://www.manitowoccrane.com) - [www.potain.com](http://www.potain.com)