

# Hup M 28-22

The crane for all your projects

**NEW**

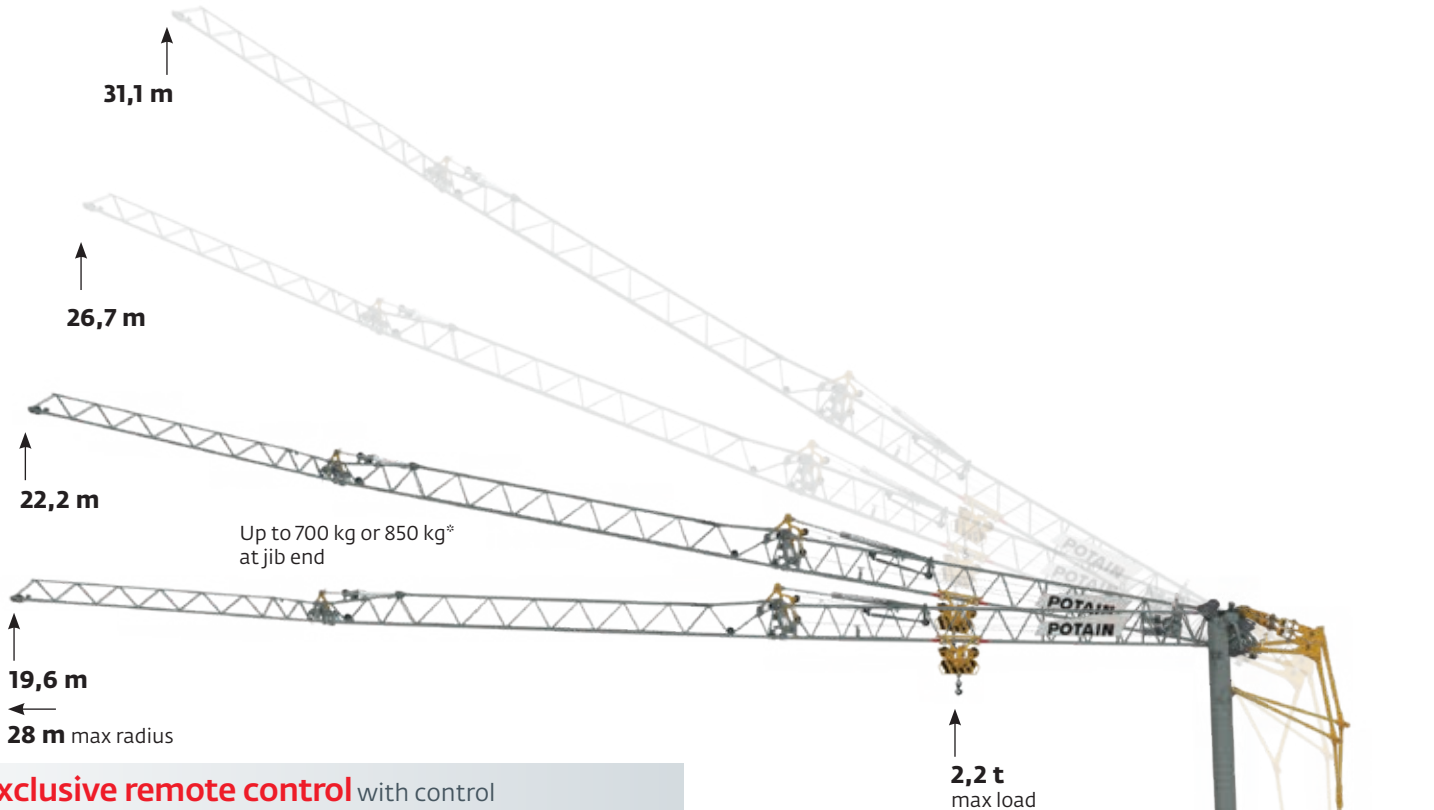
**Height Under Hook:** 19,6 m - 31,1 m (raised jib at 30°)

**Jib radius:** 28 m

**Maximum load:** 2,2 t

**Max. load at jib end:** 700 kg or 850 kg\*

**Transport axle:** 80 km/h on road (depends on the local regulations )



**Exclusive remote control** with control Customisation, new navigation ergonomics and the **Smart Set-up** software.

Sun protection for high visibility

Big color screen

Ergonomic design

Drive control with 3 driving profiles

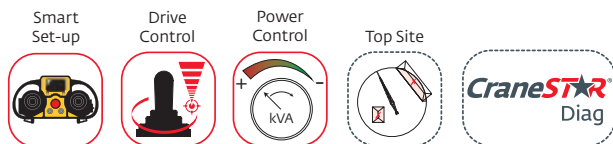
High precision speed

Screen navigation jog dial

Permanent ballasts

Integrated transport axle: **80km/h**

2 footprint options  
square 4,5 m x 4,5 m  
rectangle 4 m x 5 m



\* with additional ballast

# Hup M 28-22

The crane for all your projects



Fifth wheel

## M for Mobile: ready for the road

- Integrated transport axle **80 km/h** to transport the crane direct on the road from one jobsite to another one whatever the distance or 25 km/h transport axle
- EBS braking system
- One single package with permanent ballast
- Fifth wheel or tow bar
- Compact dimensions: the only self-erecting crane with 28 m jib in such a compact transport format

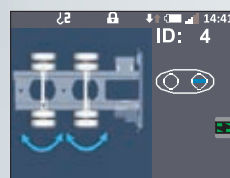


Tow bar

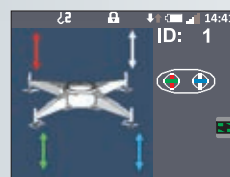
## High performance, versatile and ergonomic crane

- Latest mechanisms generation: LVF Optima DVF optima, HPS High Performance Slewing
- 16 jib configurations, 2 footprint options
- Crane erection and folding by one operator only thanks to the remote control
- Smart Set-up: simple and reactive interface and always the operator driving customisation, high precision speed

## New Smart Set-up



steering axle control



hydraulic leveling control



the transport format the most compact in this category

## Easy to set up: it reaches places where others can't

- Easy moving thanks to the double steering axle, controlled from the remote control
- Maximum steering radius  $+20^{\circ}/-20^{\circ}$  in order to reach the most confined areas



dual steering axle  $+20^{\circ}/-20^{\circ}$

- Dual wheels to face any terrain type
- Hydraulic leveling controlled from the remote control
- Integrated battery pack to ensure the steering axle movements and the hydraulic leveling is easily achieved

## Hup M 28-22: return on investment

- Maximum mobility for a self-erecting crane
- A real tower crane productivity on site
- Maintenance with remote diagnostic tool CraneSTAR Diag
- The Smart Set-up advanced operating software
- An environment friendly crane on the jobsite

