



Manitowoc

GROVE
by Manitowoc

POTAIN
by Manitowoc

NATIONAL CRANE
by Manitowoc

SHUTTLELIFT
by Manitowoc



Grove – All-Terrain

Metric	↓	↑	↔
GMK3050-2	50 t	50 m	36 m / 0,9 t
GMK3060L	60 t	65 m	48 m / 0,6 t
GMK4080-2	80 t	75 m	56 m / 0,8 t
GMK4090	90 t	75 m	58 m / 0,7 t
GMK4100L-1	100 t	89 m	62 m / 0,8 t
GMK5150	150 t	88 m	76 m / 0,9 t
GMK5150L	150 t	97 m	74 m / 0,9 t
GMK5180-1	180 t	101 m	76 m / 1,1 t
GMK5200-1	200 t	101 m	84 m / 1,0 t
GMK5250L-1	250 t	110 m	88 m / 0,9 t
GMK5250XL-1	250 t	119 m	90 m / 0,8 t
GMK6300L-1	300 t	120 m	94 m / 0,9 t
GMK6400*	400 t	137 m	96 m / 2,6 t
GMK7450*	450 t	137 m	104 m / 1,4 t

*with MegaWingLift™

Imperial	↓	↑	↔
GMK3050-2	55 USt	164 ft	118 ft / 1.0 USt
GMK3060L	65 USt	187 ft	151 ft / 0.8 USt
GMK4080-2	88 USt	246 ft	175 ft / 0.7 USt
GMK4090	100 USt	246 ft	195 ft / 0.7 USt
GMK4100L-1	115 USt	292 ft	180 ft / 0.8 USt
GMK5150	175 USt	289 ft	225 ft / 1.3 USt
GMK5150L	175 USt	318 ft	225 ft / 1.0 USt
GMK5180-1	210 USt	331 ft	235 ft / 1.0 USt
GMK5200-1	240 USt	331 ft	280 ft / 1.0 USt
GMK5250L-1	300 USt	361 ft	285 ft / 1.2 USt
GMK5250XL-1	300 USt	390 ft	295 ft / 0.9 USt
GMK6300L-1	350 USt	393 ft	305 ft / 1.2 USt
GMK6400*	450 USt	449 ft	310 ft / 2.9 USt
GMK7550*	450 USt	449 ft	340 ft / 1.6 USt

*with MegaWingLift™



Grove – Telescoping Crawler

Metric	↓	↑	↔
GHC30	30 t	40,2 m	30 m / 1,27 t
GHC50	45 t	45,4 m	36 m / 0,8 t
GHC55	50 t	45,4 m	36 m / 0,8 t
GHC75	70 t	52,7 m	44 m / 0,7 t
GHC130	120 t	70,0 m	62 m / 1 t
GHC140	127 t	70,0 m	64 m / 1,3 t

Imperial	↓	↑	↔
GHC30	30 USt	132 ft	95 ft / 1.40 USt
GHC50	50 USt	149 ft	125 ft / 0.95 USt
GHC55	55 USt	149 ft	125 ft / 0.95 USt
GHC75	75 USt	173 ft	140 ft / 1.45 USt
GHC130	132 USt	229.7 ft	180 ft / 1.95 USt
GHC140	140 USt	229.7 ft	180 ft / 2.05 USt



Grove – Rough-Terrain

Metric	↓	↑	↔
RT530E-2	30 t	45,0 m	34 m / 0,6 t
RT540E	35 t	47,0 m	36 m / 0,6 t
RT550E	45 t	49,0 m	32 m / 0,8 t
GRT655	51 t	51,8 m	44 m / 0,52 t
GRT655L	51 t	59,7 m	42 m / 0,65 t
RT765E-2	60 t	65,2 m	44 m / 0,9 t
RT770E	65 t	67,4 m	48 m / 0,5 t
GRT880	80 t	68,0 m	50 m / 0,69 t
GRT8100	100 t	72,9 m	52 m / 0,51 t
GRT8120	120 t	80,8 m	58 m / 0,69 t
RT9130E-2	120 t	85,0 m	56 m / 0,7 t
GRT9165	150 t	91,2 m	73 m / 0,53 t

Imperial	↓	↑	↔
RT530E-2	30 USt	146 ft	120 ft / 0.45 USt
RT540E	40 USt	154 ft	125 ft / 0.54 USt
RT550E	55 USt	170 ft	145 ft / 0.55 USt
GRT655	55 USt	196 ft	145 ft / 0.50 USt
RT765E-2	65 USt	214 ft	150 ft / 0.71 USt
RT770E	70 USt	221 ft	160 ft / 0.51 USt
GRT880	80 USt	223.3 ft	170 ft / 0.60 USt
GRT8100	100 USt	239.4 ft	170 ft / 0.58 USt
GRT8120	120 USt	265 ft	190 ft / 0.76 USt
RT9130E-2	130 USt	279 ft	185 ft / 0.81 USt
GRT9165	165 USt	299 ft	240 ft / 0.61 USt



Grove – Truck Mounted

Metric	↓	↑	↔
TMS500-2	36 t	29 m	38 m / 0,59 t
TMS500-2	36 t	31 m	36 m / 0,66 t
TMS700E	50-55 t	65 m	46 m / 0,55 t
TMS800E	70 t	70 m	50 m / 0,56 t
TMS9000-2	100 t	80,3 m	65 m / 0,46 t

Imperial	↓	↑	↔
TMS500-2	40 USt	95 ft	130 ft / 0.52 USt
TMS500-2	40 USt	102 ft	125 ft / 0.51 USt
TMS700E	50-60 USt	212 ft	150 ft / 0.69 USt
TMS800E	80 USt	230 ft	165 ft / 0.59 USt
TMS9000-2	115 USt	263.4 ft	215 ft / 0.51 USt



Grove – Carrydeck

Metric	↓	↑	↔
GCD09	8,1 t	14,6 m	12,8 m / 0,77 t
GCD15	13,6 t	21,2 m	18,75 m / 0,50 t
GCD20	18,1 t	26,2 m	24,4 m / 0,36 t
GCD25	22,7 t	28,9 m	25,6 m / 0,6 t

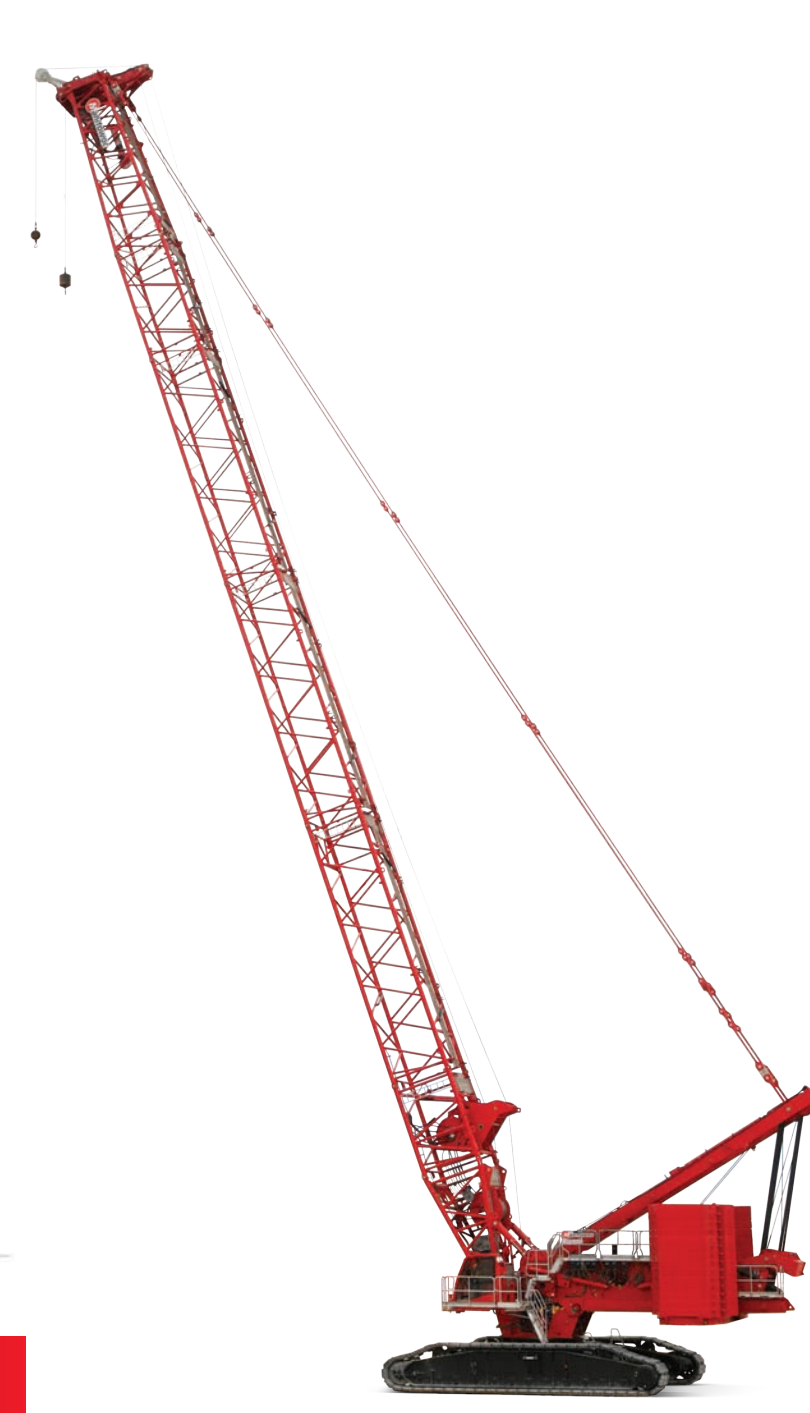
Imperial	↓	↑	↔
GCD09	9,0 USt	48 ft	42 ft / 0,86 USt
GCD15	15,0 USt	69,5 ft	61,5 ft / 0,55 USt
GCD20	20,0 USt	86 ft	77 ft / 0,4 USt
GCD25	25,0 USt	95 ft	84 ft / 0,7 USt



Shuttlelift – Carrydeck

Metric	↓	↑	↔
SCD09	8,1 t	14,6 m	12,8 m / 0,77 t
SCD15	13,6 t	21,2 m	18,75 m / 0,50 t
SCD20	18,1 t	26,2 m	24,4 m / 0,36 t
SCD25	22,7 t	28,9 m	25,6 m / 0,6 t

Imperial	↓	↑	↔
SCD09	9,0 USt	48 ft	42 ft / 0,86 USt
SCD15	15,0 USt	69,5 ft	61,5 ft / 0,55 USt
SCD20	20,0 USt	86 ft	77 ft / 0,4 USt
SCD25	25,0 USt	95 ft	84 ft / 0,7 USt



Manitowoc – Lattice-boom Crawlers

Metric	↓	↑	↔
MLC80A-1	72,6 t	62 m	50 m / 1,7 t
MLC90A-1	81,6 t	62 m	50 m / 1,7 t
MLC100A-1	90,7 t	62 m	50 m / 1,7 t
MLC100-1	100 t	62 m	50 m / 1,7 t
MLC150-1	150 t	76 m	65 m / 1,5 t
MLC165-1	165 t	102,5 m	74 m / 1,9 t
Model 14000	200 t	129,0 m	84 m / 3,2 t
Model 999	250 t	146,2 m	98 m / 2,0 t
MLC300	350 t	148,9 m	102 m / 5,2 t
MLC300**	300 t	184,2 m	128 m / 5,9 t
MLC300*	300 t	91,7 m	70 m / 4,5 t
Model 16000	400 t	137,6 m	88 m / 8,6 t
Model 16000WA	129,9 t	115,4 m	74 m / 5,3 t
Model 16000*	380 t	179,2 m	124 m / 13,2 t
Model 18000	600 t	160,3 m	104 m / 10,0 t
Model 18000*	750 t	185,7 m	132 m / 10,6 t
MLC650*	650 t	156,1 m	108 m / 8,8 t
MLC650**	700 t	203,8 m	144 m / 10,3 t
Model 31000	2300 t	210,0 m	152 m / 45,0 t

*with MAX-ER® attachment **with VPC-MAX™ attachment

with Fixed Position Counterweight

Imperial	↓	↑	↔
MLC80A-1	80 USt	204 ft	170 ft / 1.6 USt
MLC90A-1	90 USt	204 ft	170 ft / 1.6 USt
MLC100A-1	100 USt	204 ft	170 ft / 1.6 USt
MLC100-1	110 USt	204 ft	170 ft / 1.6 USt
MLC150-1	165 USt	249 ft	215 ft / 1.6 USt
MLC165-1	182 USt	336 ft	243 ft / 2.1 USt
Model 14000	220 USt	423 ft	280 ft / 3.5 USt
Model 999	275 USt	480 ft	320 ft / 2.3 USt
MLC300	386 USt	489 ft	335 ft / 5.7 USt
MLC300**	330 USt	604 ft	420 ft / 6.5 USt
MLC300*	330 USt	300.8 ft	235 ft / 8.6 USt
Model 16000	440 USt	452 ft	300 ft / 7.8 USt
Model 16000WA	143 USt	379 ft	243 ft / 5.8 USt
Model 16000*	419 USt	588 ft	410 ft / 14.6 USt
Model 18000	660 USt	526 ft	340 ft / 11.2 USt
Model 18000*	826 USt	610 ft	440 ft / 10.5 USt
MLC650*	717 USt	512 ft	354 ft / 12.2 USt
MLC650**	772 USt	669 ft	472 ft / 11.4 USt
Model 31000	2535 USt	688 ft	500 ft / 50.0 USt

*with MAX-ER® attachment **with VPC-MAX™ attachment

with Fixed Position Counterweight



National Crane Boom Truck – Swing Seat

Metric	↓	↑	↔
1300A	27,2 t	49,7 m	32,0 m / 0,27 t
1400A	29,9 t	50,0 m	36,6 m / 0,23 t
NBT36-1	32,7 t	57,9 m	34,4 m / 0,36 t
NBT40-1	36,3 t	62,5 m	39,6 m / 0,25 t
NBT45-1	40,8 t	62,8 m	39,6 m / 0,47 t
NBT50	45,4 t	54,6 m	45,7 m / 0,27 t
NBT55	49,9 t	54,6 m	45,7 m / 0,27 t
NTC55	49,9 t	54,6 m	45,7 m / 0,27 t
NBT50L/NTC50L	45,4 t	61,6 m	45,7 m / 0,28 t
NBT55L/NTC55L	49,9 t	61,6 m	47,2 m / 0,34 t
NBT60	54,4 t	54,6 m	45,7 m / 0,27 t
NBT60L/NTC60L	54,4 t	61,6 m	50,3 m / 0,40 t

Imperial	↓	↑	↔
1300A	30 USt	163 ft	105 ft / 0.30 USt
1400A	33 USt	164 ft	120 ft / 0.25 USt
NBT36-1	36 USt	190 ft	113 ft / 0.40 USt
NBT40-1	40 USt	205 ft	130 ft / 0.28 USt
NBT45-1	45 USt	206 ft	130 ft / 0.33 USt
NBT50	50 USt	179 ft	150 ft / 0.30 USt
NBT55	55 USt	179 ft	150 ft / 0.30 USt
NTC55	55 USt	179 ft	150 ft / 0.30 USt
NBT50L/NTC50L	50 USt	202 ft	150 ft / 0.31 USt
NBT55L/NTC55L	55 USt	202 ft	155 ft / 0.38 USt
NBT60	60 USt	179 ft	150 ft / 0.30 USt
NBT60L/NTC60L	60 USt	202 ft	165 ft / 0.44 USt



National Crane Boom Truck – Stand Up

Metric	↓	↑	↔
400B	9,1 t	20,1 m	16,7 m / 0,52 t
500E2	16,3 t	36,9 m	19,81 m / 0,748 t
600E2	18,1 t	44,0 m	24,38 m / 0,36 t
600H	18,1 t	44,0 m	24,38 m /