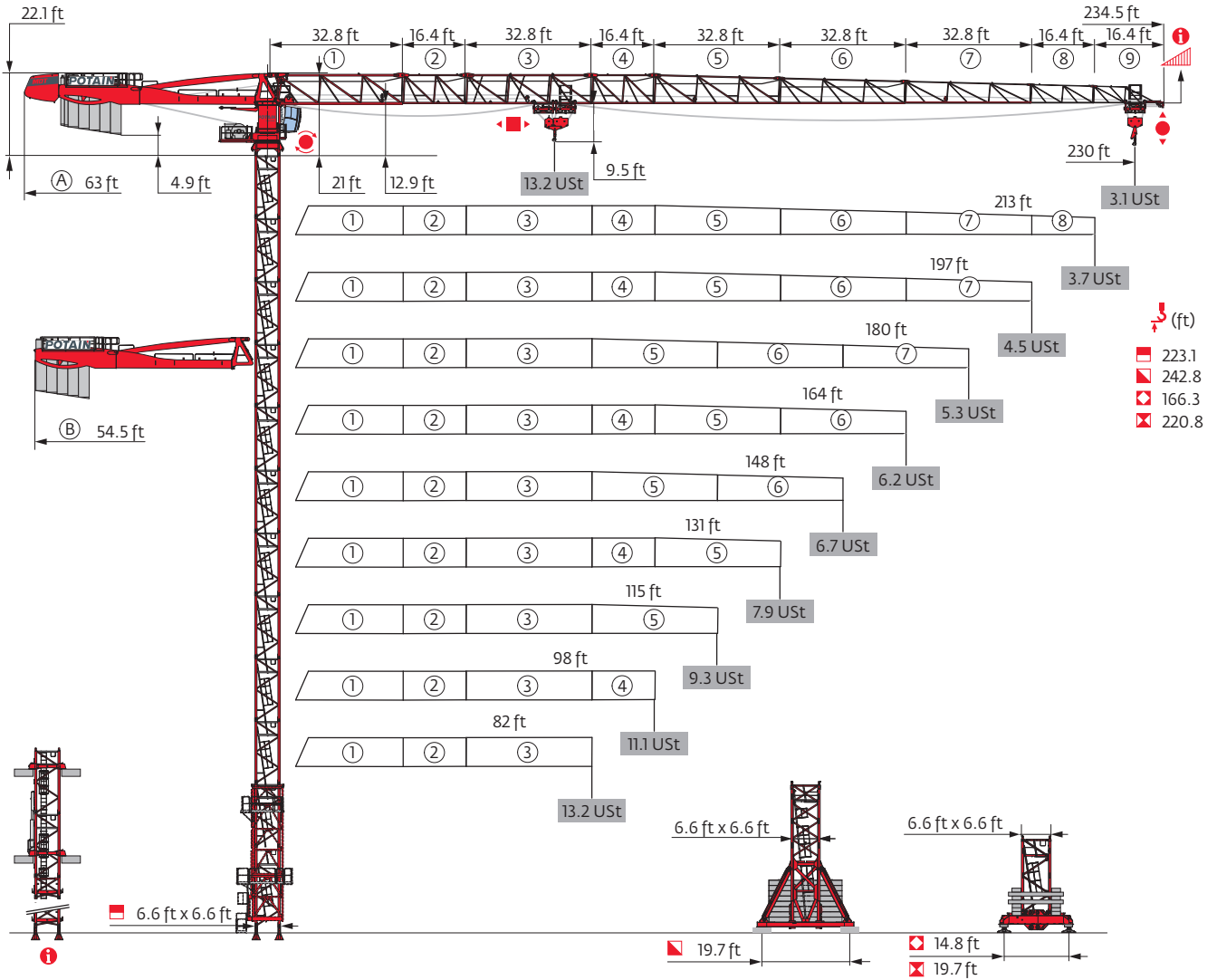


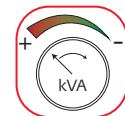
MDT 289



Potain Plus



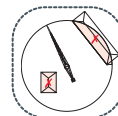
Power Control



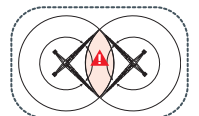
CraneSTAR



Top Site



Top Tracing 3

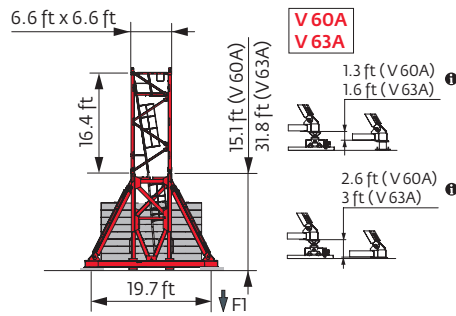
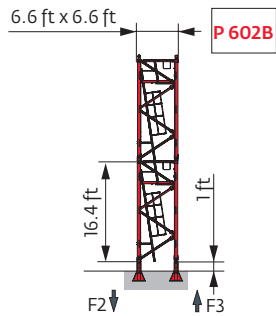


Mast - Reactions

6.6 ft - P 602B										
Height (ft)	82	98	115	131	148	164	180	197	213	230
Height (ft)	223.1	223.1	223.1	223.1	217.5	223.1	223.1	206.7	206.7	206.7
Height/P _r (ft)	223.1	223.1	223.1	223.1	217.5	223.1	223.1	206.7	206.7	206.7
Height	10.9 ft	2	2	2	0	2	2	2	2	2
	16.4 ft	12	12	12	12	13	12	12	11	11
F2 (Ust)	● 207	210	208	210	203	209	207	200	202	204
	■ 296	301	300	306	286	311	311	265	274	282
F3 (Ust)	● 147	148	145	145	139	142	141	134	136	138
	■ 243	245	243	248	228	251	251	206	214	222

6.6 ft - V 60A										
Height (ft)	82	98	115	131	148	164	180	197	213	230
Height (ft)	226.1	226.1	226.1	226.1	220.8	220.8	220.8	209.7	209.7	209.7
Height/P _r (ft)	226.1	226.1	226.1	226.1	220.8	220.8	220.8	209.7	209.7	209.7
Height	10.9 ft	1	1	1	2	2	2	1	1	1
	16.4 ft	12	12	12	12	11	11	11	11	11
F1 (Ust)	● 122	124	123	125	119	120	119	118	119	120
	■ 156	157	156	159	150	154	154	136	141	146

6.6 ft - V 63A										
Height (ft)	82	98	115	131	148	164	180	197	213	230
Height (ft)	237.2	237.2	237.2	242.8	237.2	237.2	237.2	220.8	220.8	220.8
Height/P _r (ft)	237.2	237.2	237.2	242.8	237.2	237.2	237.2	220.8	220.8	220.8
Height	10.9 ft	2	2	2	1	2	2	2	2	2
	16.4 ft	11	11	11	12	11	11	11	10	10
F1 (Ust)	● 136	135	134	141	135	136	135	126	127	128
	■ 176	178	177	188	178	182	183	155	161	165

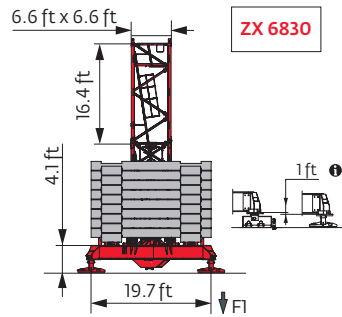
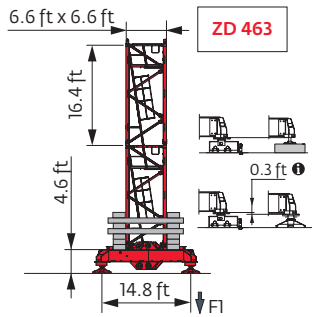


6.6 ft - ZD 463 -

WIND (ft)	82	98	115	131	148	164	180	197	213	230
h (ft)	161.1	161.1	161.1	161.1	161.1	161.1	166.3	155.5	155.5	149.9
h/P _w (ft)	161.1	155.5	161.1	155.5	161.1	161.1	161.1	155.5	149.9	149.9
10.9 ft	2	2	2	2	2	2	1	0	0	1
	8	8	8	8	8	8	9	9	9	8
FI (Ust)	● 114	115	114	113	115	114	116	116	116	113
	■ 106	107	105	106	107	109	115	106	110	106

6.6 ft - ZX 6830 -

WIND (ft)	82	98	115	131	148	164	180	197	213	230
h (ft)	215.2	220.8	215.2	220.8	215.2	215.2	215.2	198.8	198.8	198.8
h/P _w (ft)	215.2	220.8	215.2	220.8	215.2	215.2	215.2	198.8	198.8	198.8
10.9 ft	1	0	1	0	1	1	1	1	1	1
	12	13	12	13	12	12	12	11	11	11
FI (Ust)	● 116	119	115	120	115	116	115	111	111	112
	■ 139	148	139	150	140	145	145	120	125	130



Note: When "ASCE" is noted in this data sheet it is referring to 115 mph Wind Zone, Exposure B, Design Wind Speed = 98 mph. See back cover for design wind speed calculations.

i Motorized accesses: adapted mast compositions, base ballast and reactions.

Anchorage

i

Base ballast

(Ust) / 6.6 ft - V 60A -

(ft)	82	98	115	131	148	164	180	197	213	230
226.1	145.5	145.5	145.5	145.5						
220.8	145.5	145.5	132.3	132.3	132.3	132.3	132.3			
209.7	132.3	119.1	119.1	119.1	119.1	119.1	119.1	132.3	132.3	132.3
193.2	105.8	105.8	105.8	105.8	105.8	92.6	92.6	105.8	105.8	105.8
176.8	92.6	92.6	92.6	79.4	92.6	79.4	79.4	92.6	92.6	92.6
160.4	79.4	79.4	79.4	66.1	66.1	66.1	66.1	79.4	79.4	79.4
144	66.1	66.1	66.1	52.9	52.9	52.9	52.9	66.1	66.1	52.9
127.6	52.9	52.9	52.9	52.9	52.9	39.7	39.7	52.9	39.7	52.9
111.2	52.9	52.9	52.9	52.9	52.9	39.7	39.7	39.7	39.7	52.9
94.8	52.9	52.9	52.9	52.9	52.9	39.7	39.7	26.5	39.7	39.7
78.4	52.9	52.9	52.9	52.9	52.9	39.7	39.7	26.5	39.7	39.7
62	52.9	52.9	52.9	52.9	52.9	39.7	39.7	26.5	39.7	39.7

(Ust) / 6.6 ft - V 63A -

(ft)	82	98	115	131	148	164	180	197	213	230
242.8										
237.2	185.2	172	172	172	172	172	172			
220.8	145.5	145.5	145.5	145.5	132.3	145.5	145.5	145.5	145.5	145.5
204.4	119.1	119.1	119.1	119.1	119.1	105.8	105.8	119.1	119.1	132.3
188	105.8	105.8	105.8	92.6	92.6	92.6	92.6	105.8	105.8	105.8
171.6	92.6	92.6	92.6	79.4	79.4	79.4	79.4	92.6	92.6	92.6
155.2	79.4	79.4	66.1	66.1	66.1	66.1	66.1	79.4	66.1	66.1
138.8	66.1	66.1	52.9	52.9	52.9	52.9	52.9	52.9	52.9	52.9
122.4	52.9	52.9	52.9	52.9	39.7	39.7	39.7	39.7	39.7	52.9
106	52.9	52.9	52.9	52.9	39.7	39.7	39.7	26.5	39.7	39.7
89.6	52.9	52.9	52.9	52.9	39.7	39.7	39.7	26.5	39.7	39.7
73.2	52.9	52.9	52.9	52.9	39.7	39.7	39.7	26.5	39.7	39.7

(Ust) / 6.6 ft - ZD 463 -

(ft)	82	98	115	131	148	164	180	197	213	230
166.3							126.8			
161.1	132.3	132.3	126.8	121.3	126.8	121.3	121.3			
155.5	126.8	121.3	121.3	121.3	121.3	110.2	110.2	126.8	126.8	
149.9	121.3	115.7	115.7	115.7	110.2	104.7	104.7	121.3	115.7	115.7
133.5	99.2	104.7	99.2	104.7	93.7	93.7	82.7	99.2	93.7	93.7
117.1	88.2	93.7	88.2	93.7	82.7	82.7	71.7	77.2	77.2	82.7
100.7	88.2	93.7	88.2	93.7	82.7	77.2	66.1	60.6	71.7	82.7
84.3	88.2	93.7	88.2	93.7	82.7	77.2	66.1	60.6	71.7	77.2

(Ust) / 6.6 ft - ZX 6830 -

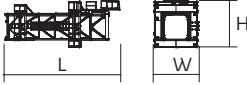

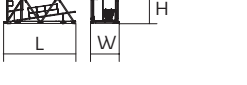




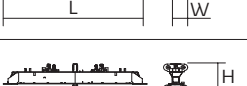
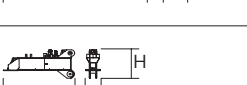
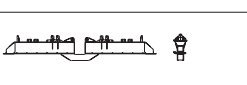
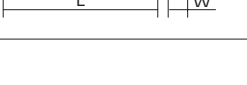
(ft)	82	98	115	131	148	164	180	197	213	230
220.8		133.4		133.4						
215.2	133.4	122.4	122.4	122.4	122.4	122.4	122.4			
198.8	111.3	111.3	111.3	100.3	100.3	100.3	100.3	111.3	111.3	111.3
182.4	100.3	89.3	89.3	89.3	89.3	78.3	78.3	100.3	89.3	89.3
166	78.3	78.3	78.3	67.2	67.2	67.2	67.2	78.3	78.3	78.3
149.6	67.2	67.2	56.2	56.2	56.2	56.2	56.2	67.2	56.2	56.2
133.2	56.2	56.2	56.2	56.2	45.2	45.2	34.2	45.2	45.2	45.2
116.8	45.2	56.2	56.2	56.2	45.2	45.2	34.2	34.2	34.2	45.2
100.4	45.2	56.2	56.2	56.2	45.2	45.2	34.2	34.2	34.2	45.2
84	45.2	56.2	56.2	56.2	45.2	45.2	34.2	34.2	34.2	45.2

Dimensions and weight

Slewing crane part:  230 ft -  -  50 LVF



Slewing crane part		L (ft)	W (ft)	H (ft)	lb (+/- 5%)
Counter-jib		36.1 36.1	3.7 3.7	8.1 8.1	21,826 20,503
Cab mast + cab		16.1	7.3	8.2	13,228
Towerhead + Hoisting winch (+ rope)		17.3	8.3	9.2	21,054
Towerhead		9.7	8.1	8.2	13,228
Hoisting winch (+ rope)		14	7.5	7.6	9,921
Jib section		35.8	5.6	9	9,348
Jib section		33.8 33.5 33.6 33.4	3.9 3.9 3.9 3.9	7.9 7.8 6.9 6	5,335 3,439 2,723 1,753
Jib section		17.6 17.3 16.7 16.7	3.9 3.9 3.9 3.9	8 7.8 5 4.6	3,164 2,116 683 485
Trolley		6.1	5	3.4	882
Pulley block		3.9	1.4	7.6	1,003
Trolley		5.2	5	3.2	463
Trolley		5.6 6.1	5 5	3.4 3.2	540 520
Pulley block		5.4 3.6	0.7 0.9	5.8 5.3	992 584

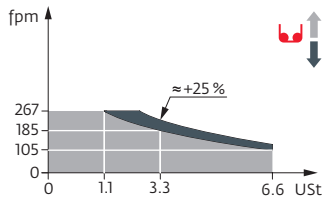
Crane tower		L (ft)	W (ft)	H (ft)	lb (+/- 5%)	
Telescopic cage T 61		6.6 ft	35.5	13.6	14.7	21,385
K 649B KM 649E		6.6 ft	33.6 33.8	6.8 6.7	6.7 6.7	11,663 10,692
KR 649A KRMT 649A K 649A KMT 649A		6.6 ft	17.2 17.2 17.2 17.2	6.9 6.9 6.8 6.8	6.8 6.8 6.7 6.7	7,165 6,724 6,184 5,666
K 649C KMT 649C KRMT 649C		6.6 ft	11.7 11.7 11.7	6.8 6.8 6.9	6.7 6.7 6.8	4,376 4,542 5,401
Fixing angles		P 602B	2.1	2.1	4.2	650
Basic mast unit		V 60A V 63A	16.4 32.9	7.9 7.9	7.9 7.9	9,674 16,502
Struts		V 60A V 63A	14.8 14.8	1 1.1	1 1.1	919 1,135
Half-bearer		V 60A V 63A	22 22	2.3 2.3	7.6 7.6	3,519 4,079
Cross girder		ZD 463	25.1	3.8	4.5	7,904
1/2 Cross girder		ZD 463	11.2	2.3	4.4	3,649
Cross girder		ZX 6830	29.9 29.9	2.5 3.7	4.9 3.6	12,004 11,607

Mechanisms

480 V - 60 Hz											hp	kW			
	50 LVF 30 Optima	fpm	105	135	185	267	54	71	97	135	50	37	1,106 ft		
	USt	6.6	5	3.3	1.1	13.2	9.9	6.6	2.5						
	90 HPL™ 30	fpm	176	228	326	469	723	90	120	172	244	361	90	66	2,772 ft
	USt	6.6	5	3.3	1.7	0.2	13.2	9.9	6.6	3.3	0.9				
	6 DVF 4 Optima	fpm	0 → 164 (13.2 USt) 0 → 328 (6.6 USt) 0 → 394 (3.3 USt)								5.5	4			
	RVF 162 Optima+	rpm	0 → 0.9								2 x 7.5	2 x 5.5			

480 V (+6% -10%) 60 Hz	50 LVF: 58 → 38 kVA	
	90 HPL™: 90 → 54 kVA	

50 LVF 30 Optima



These most combinations meet the EN 14439 and ASME B30.3-2016 specifications for “out of service” wind conditions, provided the illustrated wind speed matches required design wind speed for the location of the tower crane. The “out of service” design wind speed was determined in accordance with ASCE 7-10, Figure 26.5-1A. The wind velocity, used for this configuration was 98 mph (158 kph), which represents a nominal design 3-second wind gust at 33 ft (10 m) above ground for Exposure B category. A factor of 0.85 was applied to the 700-year ultimate design wind speed of 115 mph (185 kph), per ASCE 37-02, with the assumption that this crane is considered a temporary structure used during a construction period of 2 years or less.

- Jib elevation
- Standard equipment
- Options
- Total ballast weight
- Jib weight
- Lorry 44 ft
- Potain Plus function: Plus load curves
- Container High Cube 40 ft, and/or Flat Rack 20 ft
- Hook heights with Plus load curves
- Travelling
- Required power
- Power Control Function: wind speeds adapted to the available power
- Reactions in service
- Consult us
- Reactions out of service
- Hoisting
- Trolleying
- Slewing

This commercial document is not legally binding. For any technical information, please refer to the corresponding instructions.

