



POTAIN®
by **Mantowoc**

MDT 489

**HIGH CAPACITY.
LOW OPERATING COST.**

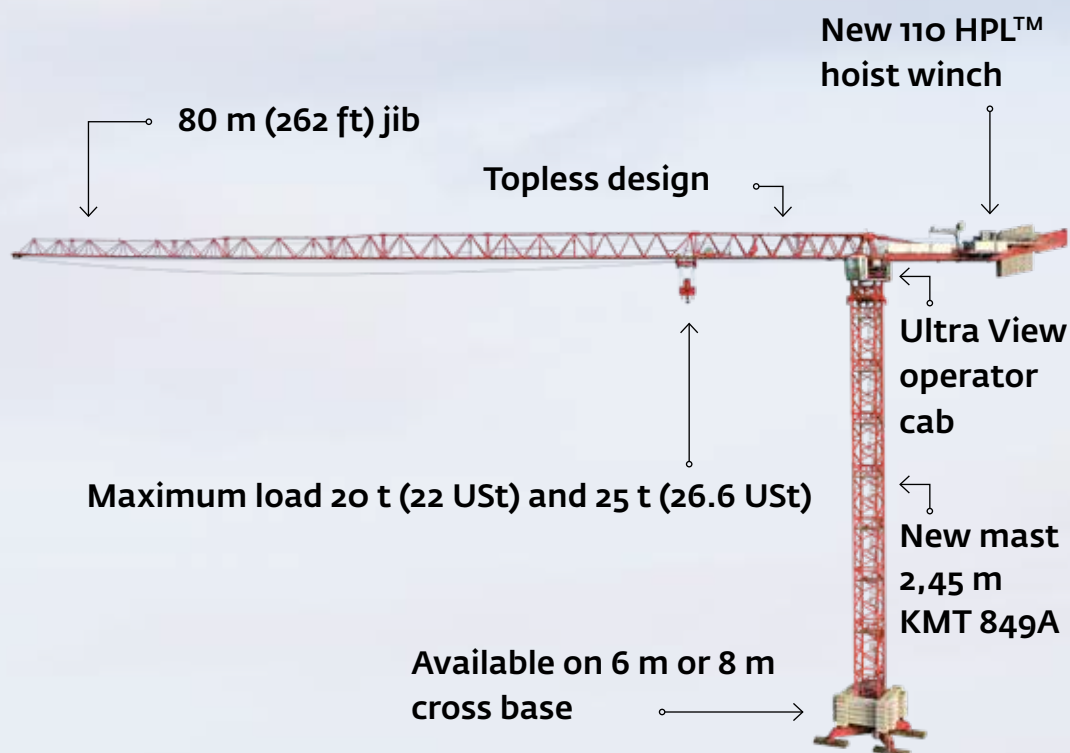
**HIGH CAPACITY.
LOW OPERATING COST.**



The lowest operating cost for a high-capacity crane in its class.

Introducing the MDT 489, the topless tower crane that offers the most highly optimized assembly and disassembly process for a crane in this category. The MDT 489 helps save operating costs while delivering the benefits of a high-capacity crane. This crane has capacity to get the job done with the most efficient erection time, transport and site access of any 450 mt crane.

MDT 489 features:



Engineered for exceptionally compact transport.

Spend less time erecting the crane and more time getting work done with the quick and easy transport and assembly of the MDT 489.

> Compact transport features

- Except for the slewing mechanism, everything is transported by standard sized container.
- Crane transports in 9 containers for the full upper part; 4 to 5 fewer containers than similar sized cranes with a much shorter assembly time.
- Only 8 trucks are needed to transport the full upper part.
- Protective packaging includes:
 - > Brackets to secure the jib sections.
 - > Cushioning pads within the container to protect the sections while facilitating efficient packing.
- Maximized use of space within carriers for a low number of required transport containers.
- Cabin rotates to better fit in shipping containers and speed erection process.



Unmatched assembly speed in this category of tower crane.

The Potain MDT 489 sets up twice as fast as similar sized cranes. It takes just two days at the most to set up the crane with an 80 m (262 ft) jib and 50 m (164 ft) mast. The crane requires little space to assemble compared to other cranes in its class. The rotating cab and thoughtful design of the counter-jib connection points make for easy mounting.

> Jib design

The crane has been designed for easy and efficient erection and easier servicing with clear access to key components.

> Fast assembly features

- Built-in slinging points on the jib make assembly faster and easier than ever before.
- Jib sections can be assembled either on the ground or in the air to maximize the space available on the jobsite.
- One single compact slewing/cab package with a cab that is always connected.
- Crane can be assembled in various configurations to best suit the space and equipment available on the jobsite.
- Once the first two boom sections are installed, the remaining 65 m (213 ft) boom can be mounted as a single bundle with a weight of 14 t (15.4 USt) or can be mounted by grouping several elements or element by element.
- Counter-jib with foldable articulated ballast cage.



The MDT 489 fills the gap between our famous MDT 389 and MDT 569.

> Large capacities that allow for greater jobsite applications and more usability

- 20 t (22 USt), 25 t (27.6 USt) max capacity.
- Two hoist winches are available — NEW 110 HPL™ (132 HPL™), 150 HPL™ (180 HPL™) with a max speed up to 195 m/min (640 fpm).
- 80 m (262 ft) jib.
- Available on 6 m (19.7 ft) and 8 m (26.2 ft) cross-base.
- Trolley offers 2 falls for fast duty-cycle lifting and 4 falls for heavy lifting.
- Automatic trolley rope tensioning and recalibration system — replacing the need for manual tensioning.
- Increased performance of topless technologies so cranes can overlap.

> Potain technologies that help provide maximum performance

The new MDT 489 features integrated Crane Control System (CCS).

- Crane calibration can be completed in only 15 min.
- Load curve with Potain Plus function maximizes lifting capacities.
- Operating profiles are customized to the crane operator.
- Ultra View cab makes it easy for the crane operator to maximize all features of the Crane Control System.
- Compatible with CraneSTAR® Diag to deliver real-time maintenance information to any computer screen.

> A broad variety of applications

Ideal for large-scale infrastructure, shipyards, industrial projects and large construction sites with heavy loads to handle.

- Highly suited for the installation of large, prefabricated components; the ability for the crane's jib to be removed easily after a job is finished makes the MDT 489 ideal for large construction sites and sites with severe space constraints and little space for assembly due to other cranes.
- Fast assembly times are key to highly time-constrained construction sites.
- The MDT 489's high capacities, fast setup times and compact erection profile make Potain the lifting leader in this class of crane.
- With the expertise of Potain engineering, the MDT 489 is ideal for the world market.



More performance
from a topless crane.



Manitowoc Cranes

Regional headquarters

Americas

Milwaukee, Wisconsin, USA

Tel: +1 414 760 4600

Shady Grove, Pennsylvania, USA

Tel: +1 717 597 8121

Fax: +1 717 597 4062

Europe and Africa

Dardilly, France - TOWERS

Tel: +33 (0) 4 72 18 20 20

Fax: +33 (0) 4 72 18 20 00

Wilhelmshaven, Germany - MOBILE

Tel: +49 (0) 4421 294 0

Fax: +49 (0) 4421 294 4301

APAC

Shanghai, China

Tel: +86 21 6457 0066

Fax: +86 21 6457 4955

Singapore

Tel: +65 6264 1188

Fax: +65 6862 4040

Middle East and India

Dubai, UAE

Tel: +971 4 8862677

Fax: +971 4 8862678/79



This document is non-contractual. Constant improvement and engineering progress make it necessary that we reserve the right to make specification, equipment, and price changes without notice. Illustrations shown may include optional equipment and accessories and may not include all standard equipment.