

MDT 489

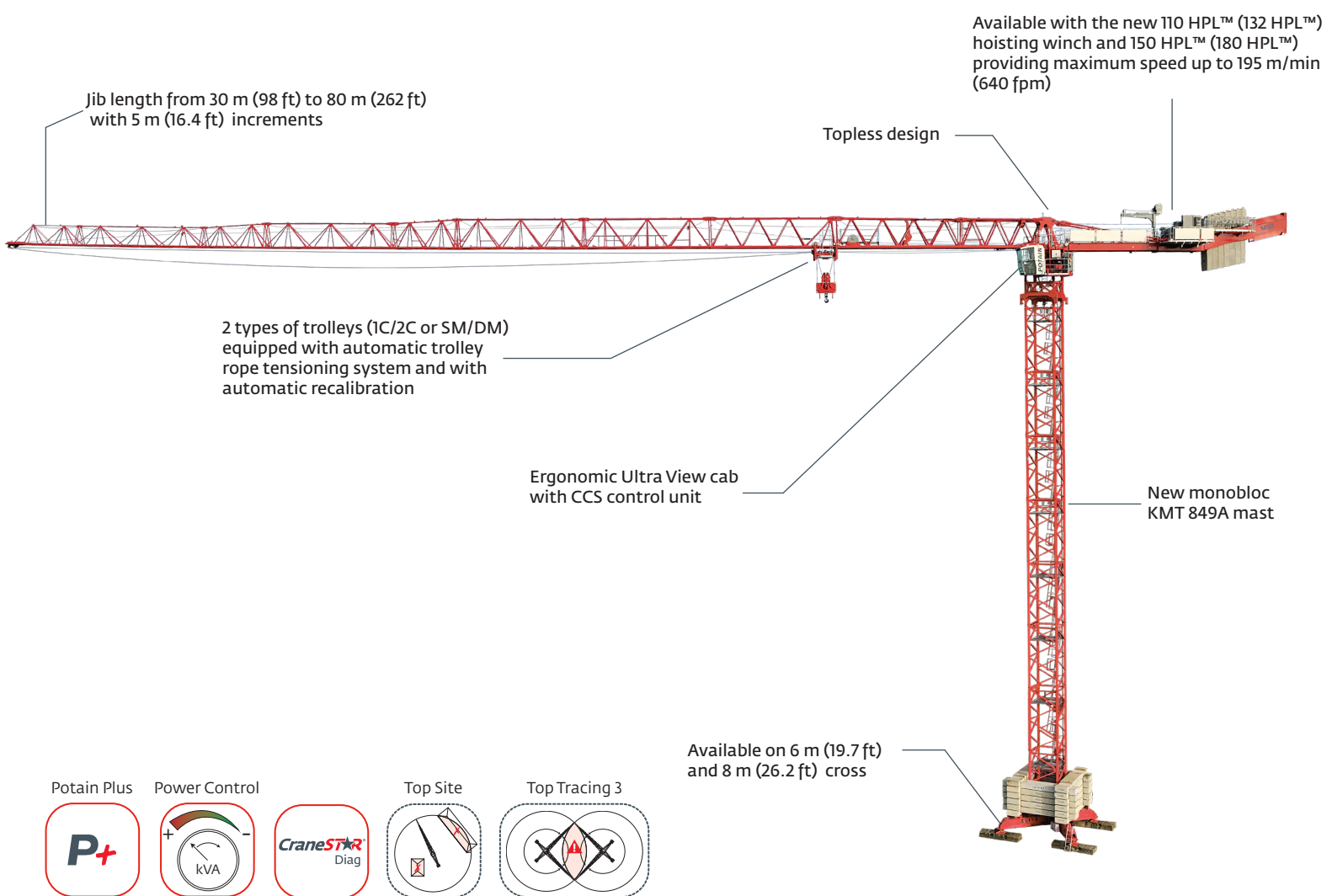
POTAIN®
by **Manitowoc**

High capacity. Low operating cost.

Maximum load: 20 t (22 USt) and 25 t (27.6 USt)

Maximum radius: 80 m (262 ft)

CCS control system



> Contact your local dealer for more information, or to find your dealer go to www.manitowoc.com.



IDEAL FOR THE WORLD MARKET

Developed for industrial project and infrastructure jobs



Pre-fabricated components



Urban areas



Metro stations



Shipyards



Bridges



Mining sector

Lowest operating costs for a high-capacity crane

- The most highly optimized assembly and disassembly process for a crane in this category helps save costs while enjoying the benefits of a high-capacity crane
- Erection time, transport and site access are the best in class for this 450 mt segment; topless concept will help to speed the erection

Quick and easy transport and assembly

- Transports in 9 containers for the rotating section (4 to 5 less containers than similar size crane) and a much shorter assembly time
- Protective packaging with brackets to secure the jib sections



- 2 times faster to set up than similar size crane with 80 m (262 ft) jib + 50 m (164 ft) mast; maximum 2-day assembly time
- Jib sections can be assembled either on the ground or in the air to maximize the space available on the jobsite; crane can be assembled in various configurations; heaviest part to be lifted is 11.3 t (12.46 USt)
- MDT 489 requires little space to assemble compared to other cranes in its class; rotating cab and thoughtful design of counter-jib connection points make for easy mounting, while different slinging scenarios help to optimize mobile crane size and space available on the ground
- Design of the jib: Crane has been designed with a goal for easy and efficient erection and to make servicing the crane easier with clear access to key components

Performance

- 20 t (22 USt), 25 t (27.6 USt) max capacity, 80 m (262 ft) jib
- Power/Speed: Trolleys 2 falls for fast duty-cycle lifting and 4 falls for heavy lifting
- In the operator cab, automatic push-button cable tensioning system for the trolley wire rope – no longer requires manual tensioning
- Could be erected on existing 6 m (19.7 ft) cross ZX 6830 or higher performances on optional 8 m (26.2 ft) cross, ZY 800 and ZY 854
- New KMT 849A mast (monobloc non-reinforced mast) has been introduced as well to offer more efficient solution



Technologies

- Available hoist winches: **NEW** 110 HPL™ (132 HPL™), 150 HPL™ (180 HPL™)
- The latest Potain technologies help provide maximum performance
- CCS control system: Load curve with Potain Plus function / customized operation profiles / ergonomically designed cab / compatible with CraneSTAR Diag / easier commissioning

