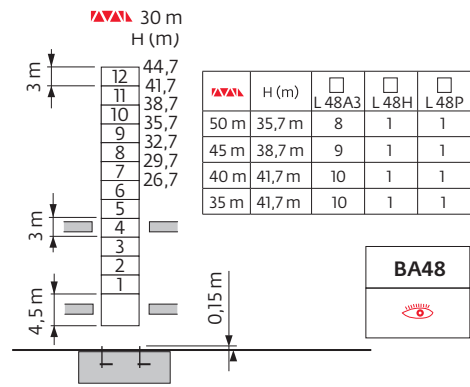
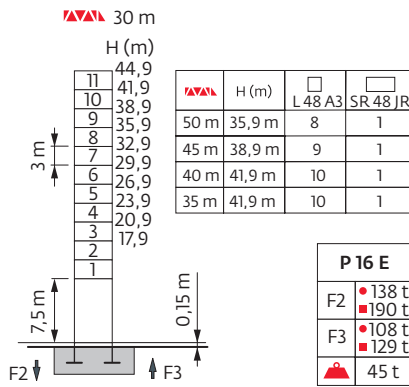


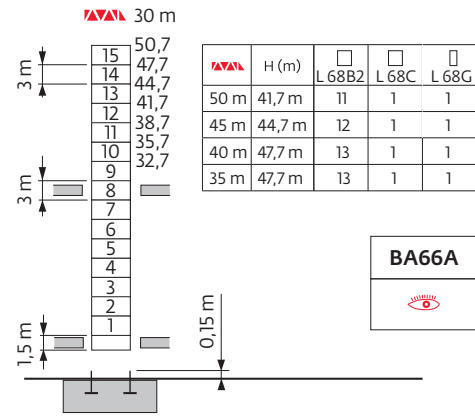
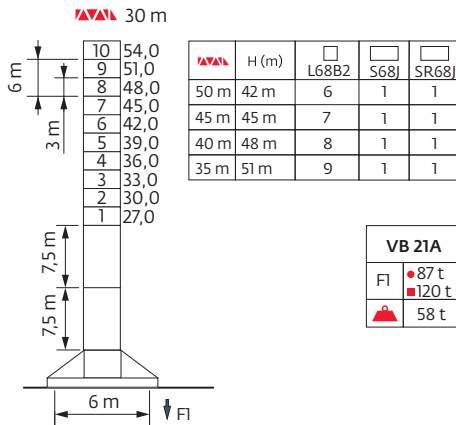
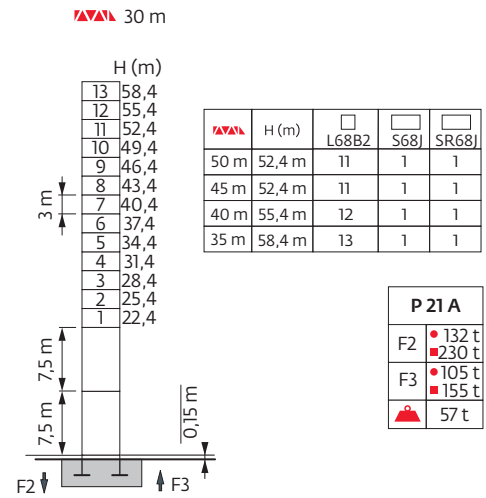
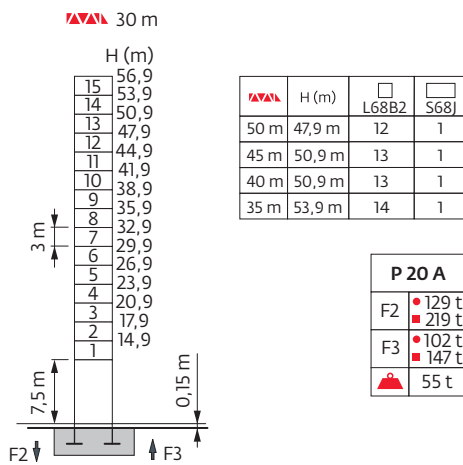


### 塔身组成 - 反力

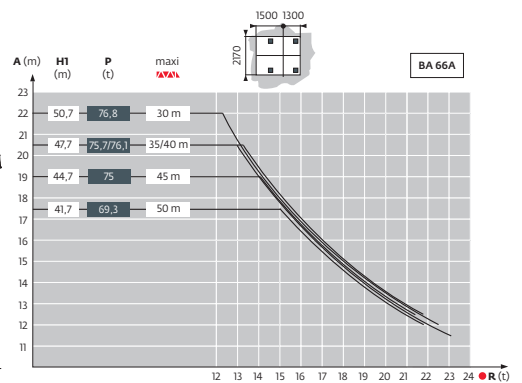
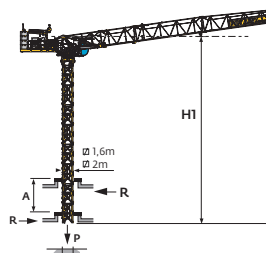
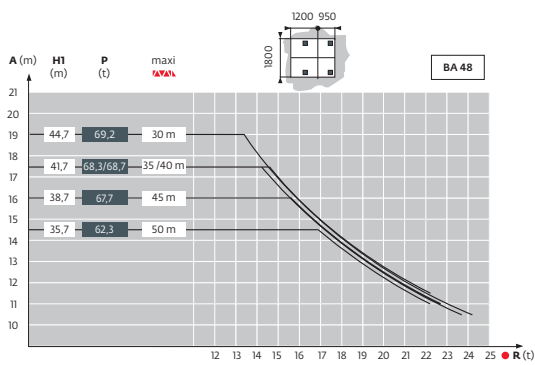
1,6m



2m



### 内爬塔机

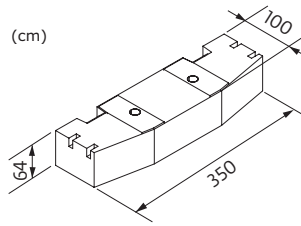




平衡臂配重

▲▲▲	4750 kg	▲▲▲ (kg)
30 m	4	19000
35 m	4	19000
40 m	4	19000
45 m	4	19000
50 m	4	19000

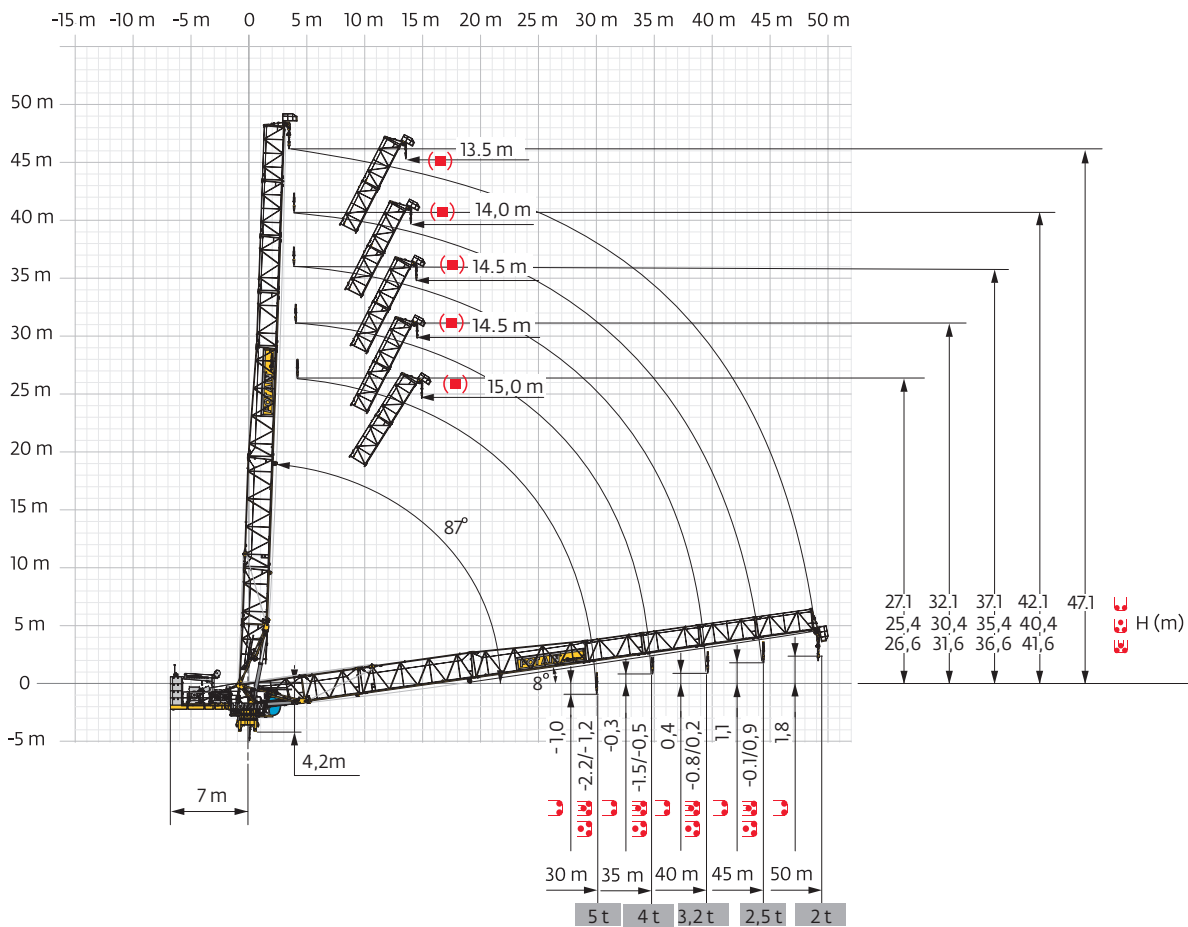
CCL - 4750 kg



压重

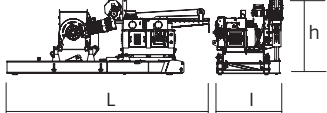
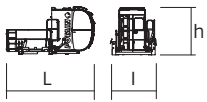
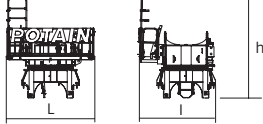
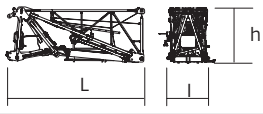
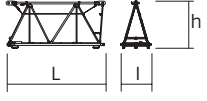
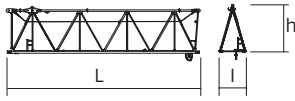
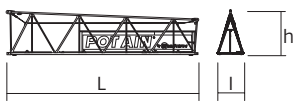
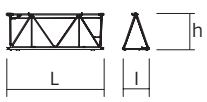

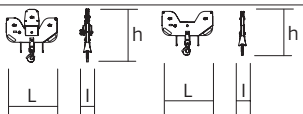

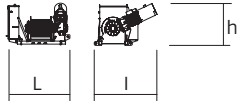
▣	VB 21	30 m	35 m	40 m	45 m	50 m	
2 m		H (m)	54	51	48	45	42
		▲▲▲ (t)	132	132	132	132	120

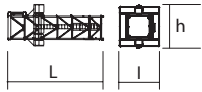


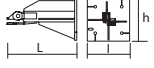
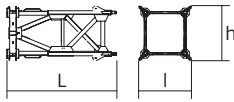
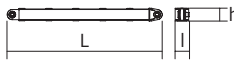
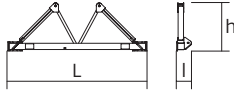
动臂变幅














## 尺寸重量表



塔机回转部分:  50 m -  -  -  40LVF / 60LVF

塔机回转部分		L (m)	l (m)	h (m)	kg (+/- 5%)	
平衡臂		40LVF 6,63 60LVF 6,63	2,18 2,18	2,47 2,47	5882 5982	
驾驶室		V140SR	4,85 2,37	2,50	1800	
回转机构		1.6 m 2.0 m	3,17 3,17	2,8 2,8 3,6 3,6	5000 6200	
起重臂根部节		①	6,24	2,08	2,56	5901
起重臂节		②	5,23	1,59	2,52	986
起重臂节		③	10,25	1,44	2,5	1455
起重臂节		④	10,21	1,42	2,37	1426
起重臂节		⑤ ⑥ ⑦ ⑧	5,17 5,15 5,15 5,15	1,42 1,39 1,38 1,38	1,96 1,93 1,92 1,91	473 396 355 304
起重臂端部节			1,23	1,48	3,05	180
吊钩	 		1,46 1,46	0,36 0,22	1,50 1,25	380 200
起升机构		40 LVF 60 LVF	2,04 2,02	2,08 2,03	1,37 1,35	1439 1538

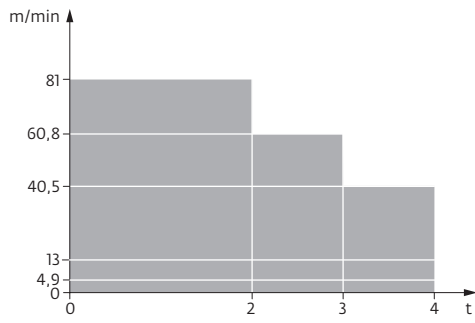
顶升装置		L (m)	l (m)	h (m)	kg (+/- 5%)	
顶升套架		□2 m □1,6 m	7,3 6,8	4,3 3,65	4,3 3,6	4605 3730
<b>塔身节</b>						
S 68J SR 68J SR 48JR		□2 m □2 m □1,6 m	7,74 7,74 7,8	2,1 2,1 1,8	2,1 2,1 1,7	4170 5175 3185
L 68 B3 L 48 A3		□2 m □1,6 m	3,26 3,24	2,12 1,67	2,12 1,73	1530 1363
<b>塔机底座</b>						
固定支脚		P 16 E	1,3	0,8	0,8	500
		P 20 A	1,4	0,6	0,6	300
		P 21 A	1,3	0,8	0,8	500
行走基节		VB 21 A	5,07	2,39	2,39	4360
斜撑		VB 21 A	4,51	0,26	0,27	390
底架		VB 21 A	6,7	0,7	2,31	1600

## 机构

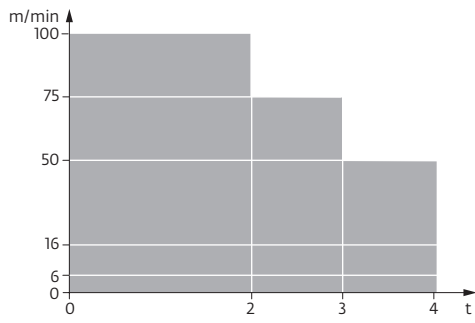
380 V - 50 Hz													hp	kW	
	40 LVF 20	m/min	4,9	13	40,5	60,8	81	2,5	6,5	20,3	30,4	40,5	40	30	456 m
		t	4	4	4	3	2	8	8	8	6	4			
	60 LVF 20	m/min	6	16	50	75	100	3	8	25	37,5	50	60	45	553 m
		t	4	4	4	3	2	8	8	8	6	4			
	40 VVH 80	min	2									40	30		
	RVF 152 Optima +	rpm	0 → 0,8									2 x 5,5	2 x 4		
VB 21A		m/min													

 IEC 60204-32	 kVA
380 V (+10% -10%) 50 Hz	40 LVF : 74 kVA 60 LVF : 90 kVA

40 LVF 20



60 LVF 20



- 工作状态下的反力
- 非工作状态下的反力
- 🏗️ 起重机在无载荷、无配重、独立高度状态下的压重
- 🏗️ 总配重
- 🚛 13, 4m 卡车
- 📦 40" 立方集装箱
- ➡️ 坚固的附着框
- ➡️ 松开的附着框
- ⬆️ 起升
- 📏 变幅
- 🔄 回转
- 🚶 行走
- ⚡ kVA 额定功率
- 👁️ 参阅内爬
- 📞 联系我们



此商业文件不承担法律责任，对于任何技术信息，请查阅相应说明书。



马尼托瓦克起重设备（中国）有限公司

工厂地址：江苏省张家港市经济开发区（南）区金塘路55号  
 市场总部：上海市漕溪北路333号中金国际广场B座1103-1105室  
 总机：021-6457 0066  
 传真：021-6457 4985  
 邮编：200030

[www.manitowoccranes.com](http://www.manitowoccranes.com)