

Center of Gravity

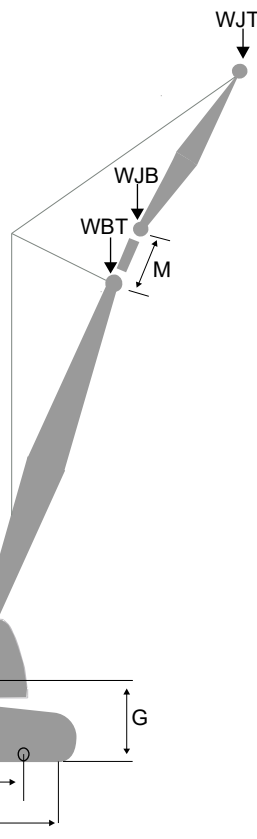
Boom No. B10:680

WEIGHT AND CENTER OF GRAVITY		
	Dimension (in.)	Weight (lb)
A	0.0	224,982
B	88.8	
C	127.6	150,414
D	31.6	
SERIES 1		
E min	161.4	440,924
E max	334.6	
F	45.5	
SERIES 2		
E min	161.4	661,386
E max	334.6	
F	74.9	
SERIES 3		
E min	161.4	881,848
E max	334.6	
F	104.5	

REFERENCE DIMENSIONS (in.)	
G	122.6
H	60.0
J	162.1
K	193.7
M	15.9
N	154.4
60 in. Pads	
P	50.0
R	55.0
T	60.0
80 in. Pads	
P	70.0
R	75.7
T	80.0

Boom Length (ft)	Boom No. B10:680	
	WBB (lb)	WBT (lb)
105.0	116,678	74,416
124.7	124,881	77,828
144.4	131,854	81,030
164.0	139,003	85,548
183.7	146,279	90,841
203.4	152,806	96,013
223.1	158,253	97,564
242.8	164,573	102,953
262.5	169,759	106,139
282.2	175,741	111,882
301.8	180,755	115,248
321.5	186,581	121,156
341.2	191,529	124,591

LATTICE WEIGHTS		
Jib Length (ft)	Jib No. 148	
	WJB (lb)	WJT (lb)
39.4	6,209	3,182
59.1	6,803	3,918
78.7	7,408	4,643
98.4	8,028	5,353
118.1	8,571	5,816
137.8	9,219	6,497



Note 1: Weight of all load blocks, hooks, weight ball, slings, hoist lines etc., beneath boom and jib point sheaves is not considered part of boom and jib weights. All items suspended from boom or jib must be considered part of the load.

Note 2: Consult proper crane capacity chart for lifting capacities and allowable boom and jib combinations.

Not to be used for crane rating purposes.

