

ROTATING UPPERWORKS WEIGHT AND CENTER OF GRAVITY (WU)			
EQUIPPED AS	WEIGHT (lbs)	DIM "A" (in.)	DIM "B" (in.)
1015 (53,000 lb. CTWT)	152,307	108.1	-9.8
LOWERWORKS WEIGHT AND CENTER OF GRAVITY (WL)			
EQUIPPED AS	WEIGHT (lbs)	DIM "C" (in.)	DIM "D" (in.)
1015	99,043	4.2	-73.1
1015 WITH OPTIONAL CARBODY JACKS	100,643	4.1	-73.2

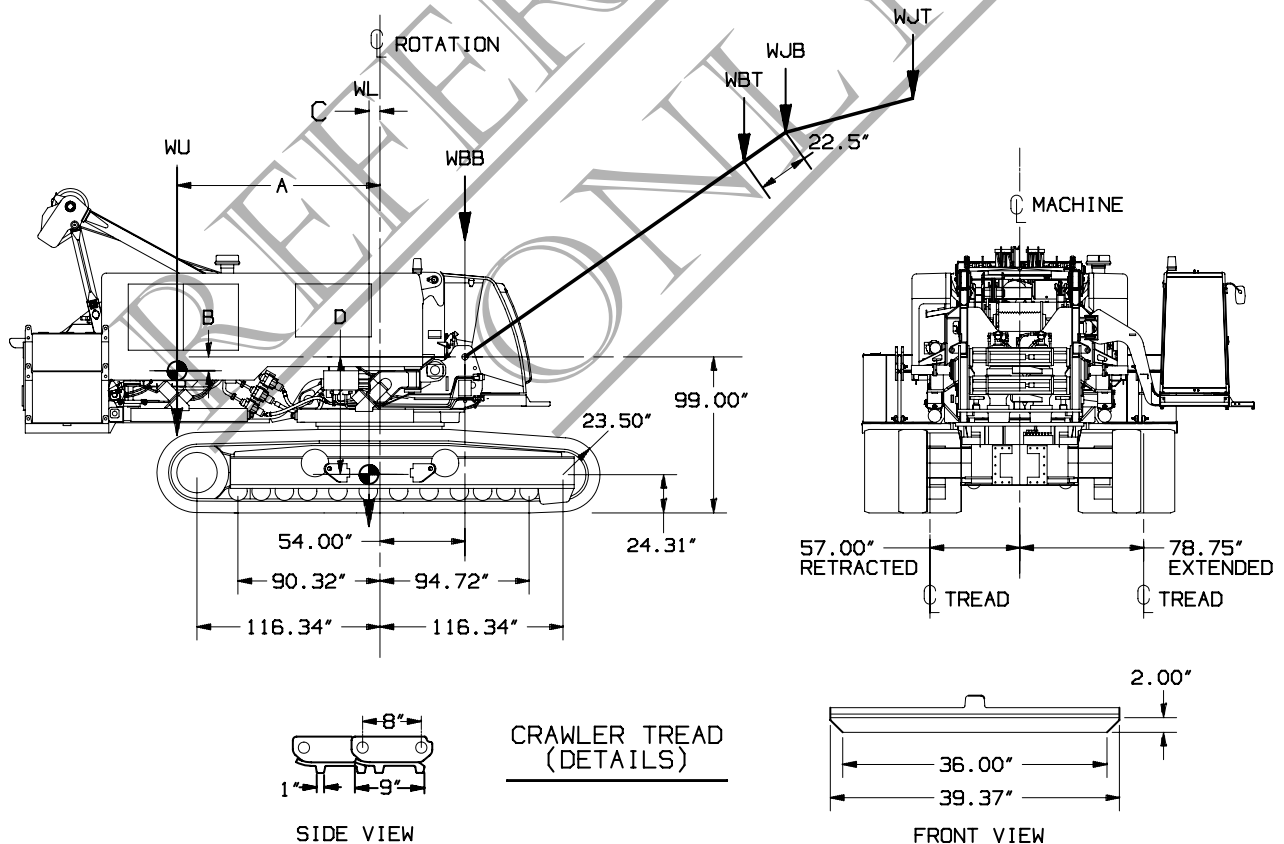
NOTE: 1
BOOM AND JIB WEIGHTS INCLUDE WEIGHT OF BOOM, JIB,
PENDANTS ETC.; BUT DO NOT INCLUDE WEIGHT OF LOAD, LOAD
BLOCK, WEIGHT BALL, SLINGS, ETC.. ALL ITEMS SUSPENDED
FROM BOOM OR JIB MUST BE CONSIDERED PART OF THE LOAD.

NOTE: 2
BOOM WEIGHTS INCLUDE WEIGHT OF 25 ft. MAST ASSEMBLY

CAUTION: NOT TO BE USED FOR CRANE RATING PURPOSES.

#83A BOOM WEIGHTS		
LENGTH (ft.)	WBB (lbs)	WBT (lbs)
50	15,373	16,807
60	17,441	16,534
70	18,727	16,364
80	19,747	16,891
90	20,661	17,112
100	21,954	17,652
110	22,423	17,691
120	23,646	18,305
130	24,305	18,794
140	25,474	19,464
150	25,708	19,748
160	26,867	20,429
170	27,442	21,006
180	28,576	21,713
190	28,702	22,112

#134A JIB WEIGHTS		
LENGTH (ft.)	WJB (lbs)	WJT (lbs)
20	1,948	1,812
30	2,213	2,098
40	2,487	2,379
50	2,764	2,657
60	2,960	2,797
70	3,250	3,063



DATE 1-28-10	SCALE	MANITOWOC CRANES, INC. MANITOWOC, WISCONSIN	C G CHART
	DR. JLD		
DWG. NO. T.S. 353	CK. JLD	MODEL 1015	1 METER TREAD BOOM NO.83A
	APP.		