

**BOOM NO. 44 (USA RIGGING)
WITH NO. 133A LAY-OUT LUFFING JIB**

BOOM LENGTH (ft)	NO. 44 BOOM		JIB LENGTH (ft)	NO. 133A LAY-OUT JIB	
	WBB (lbs)	WBT (lbs)		WJB (lbs)	WJT (lbs)
70	---	---	70	9.190	7.965
80	17.190	26.950	80	9.980	8.515
90	18.550	27.520	90	10.500	9.000
100	20.115	28.555	100	11.260	9.575
110	21.405	29.200	110	11.665	10.180
120	22.750	30.245	120	12.415	10.765
130	23.375	30.235	130	12.595	11.075
140	24.890	31.325	140	13.360	11.645
150	26.030	32.125	150	13.785	12.230
160	27.335	33.210	160	14.540	12.805
170	27.695	33.480	170	14.670	13.170
180	29.205	34.570	180	15.440	13.730
190	30.235	35.485	190	15.920	14.260
200	31.540	34.975	200	16.685	14.830
210	31.750	35.405			
220	33.025	36.440			
230	34.035	37.385			
240	35.340	38.465			
250	35.450	38.995			

NOTE 1: BOOM AND JIB WEIGHTS DO NOT INCLUDE WEIGHTS OF LOAD, LOAD BLOCK, WEIGHT BALL, SLINGS, ETC...

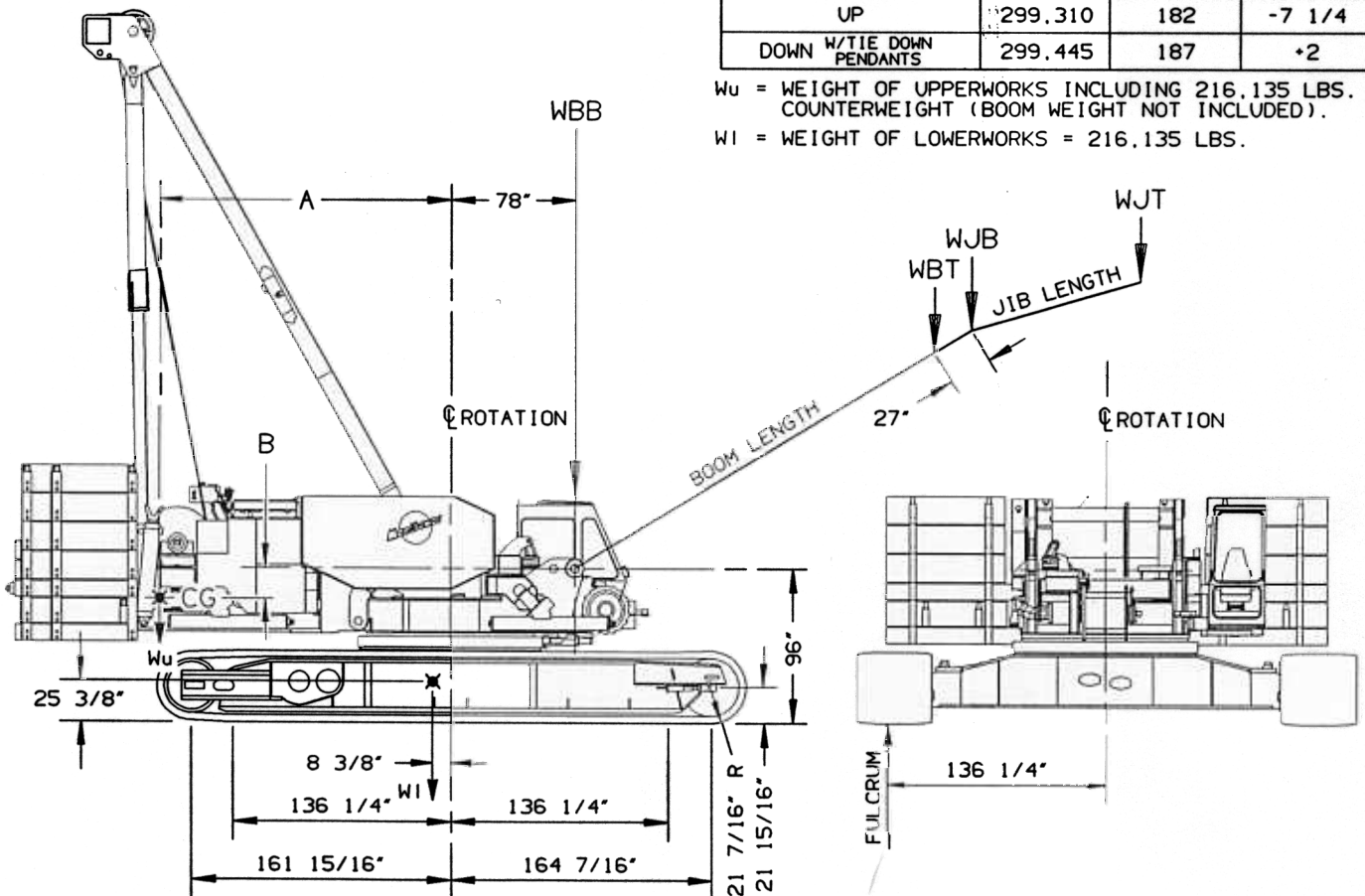
NOTE 2: WEIGHTS FOR 80 THRU 190 FT. BOOMS INCLUDE A 9 SHEAVE BOOM POINT. 200-250 FT. BOOMS INCLUDE A 3 SHEAVE BOOM POINT.

NOTE 3: CONSULT PROPER CRANE CAPACITY CHART FOR LIFTING CAPACITIES AND ALLOWABLE BOOM AND JIB COMBINATIONS.

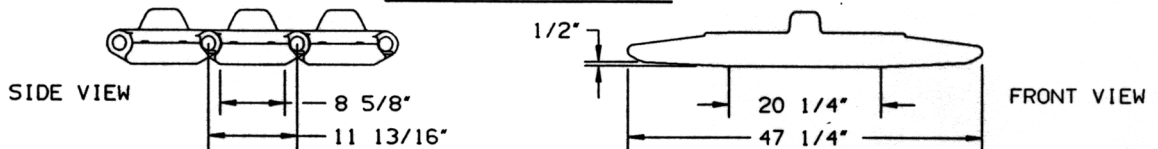
NOTE 4: AT BOOM LENGTHS GREATER THAN 190 FT. OUTSIDE ASSIST MAY BE REQUIRED. SEE LUFFING JIB RAISING PROCEDURES FOR COMBINATIONS REQUIRING OUTSIDE ASSIST.

GANTRY	Wu (lbs)	A (in)	B (in)
UP	299.310	182	-7 1/4
DOWN W/TIE DOWN PENDANTS	299.445	187	+2

Wu = WEIGHT OF UPPERWORKS INCLUDING 216.135 LBS. COUNTERWEIGHT (BOOM WEIGHT NOT INCLUDED).
Wl = WEIGHT OF LOWERWORKS = 216.135 LBS.



CRAWLER TREAD DETAILS



DATE 12-5-94	SCALE DR. NVS	MANITOC ENGINEERING CO. MANITOWOC, WISCONSIN	C G CHART WITH
DWG. NO. T.S. 315	CK. SJJ APP. ___		MODEL M-250 SERIES-2 WITH SELF-ERECT OPTION