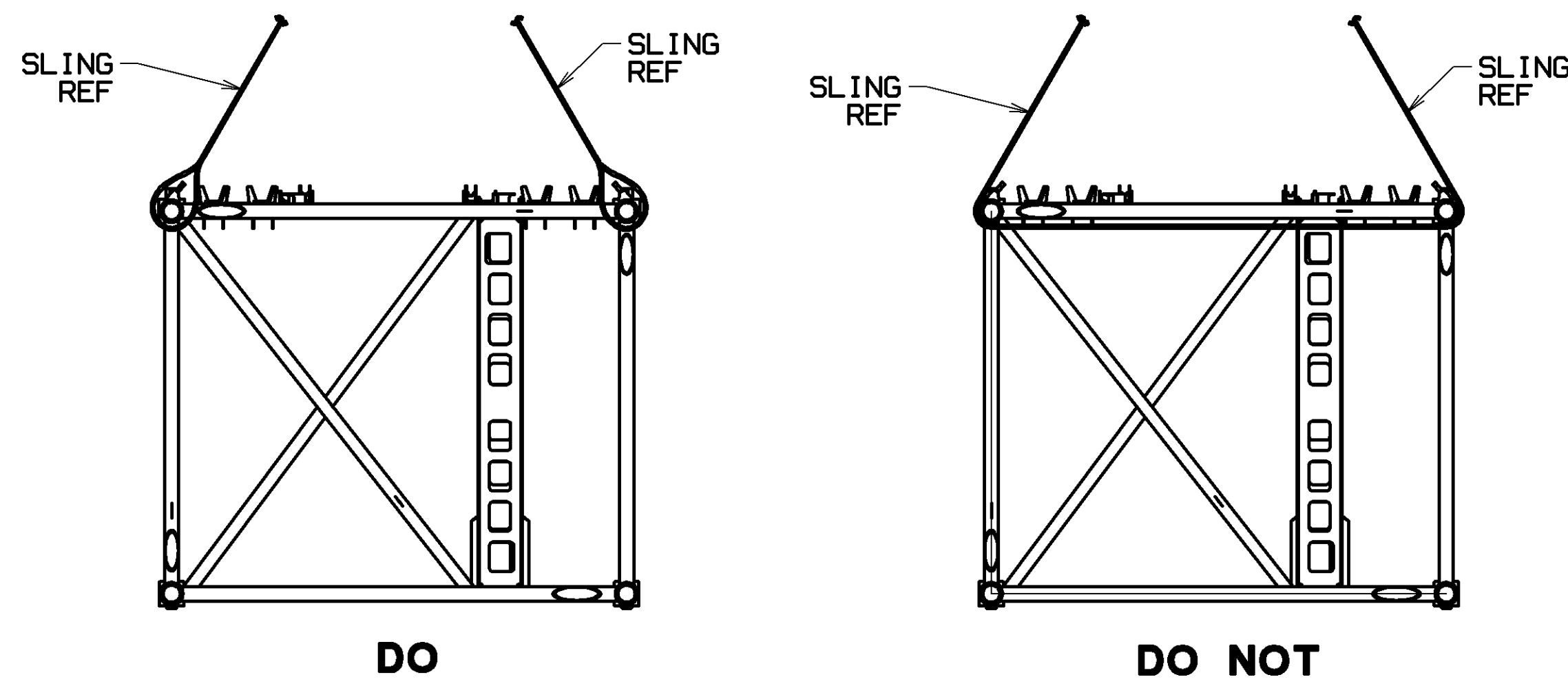
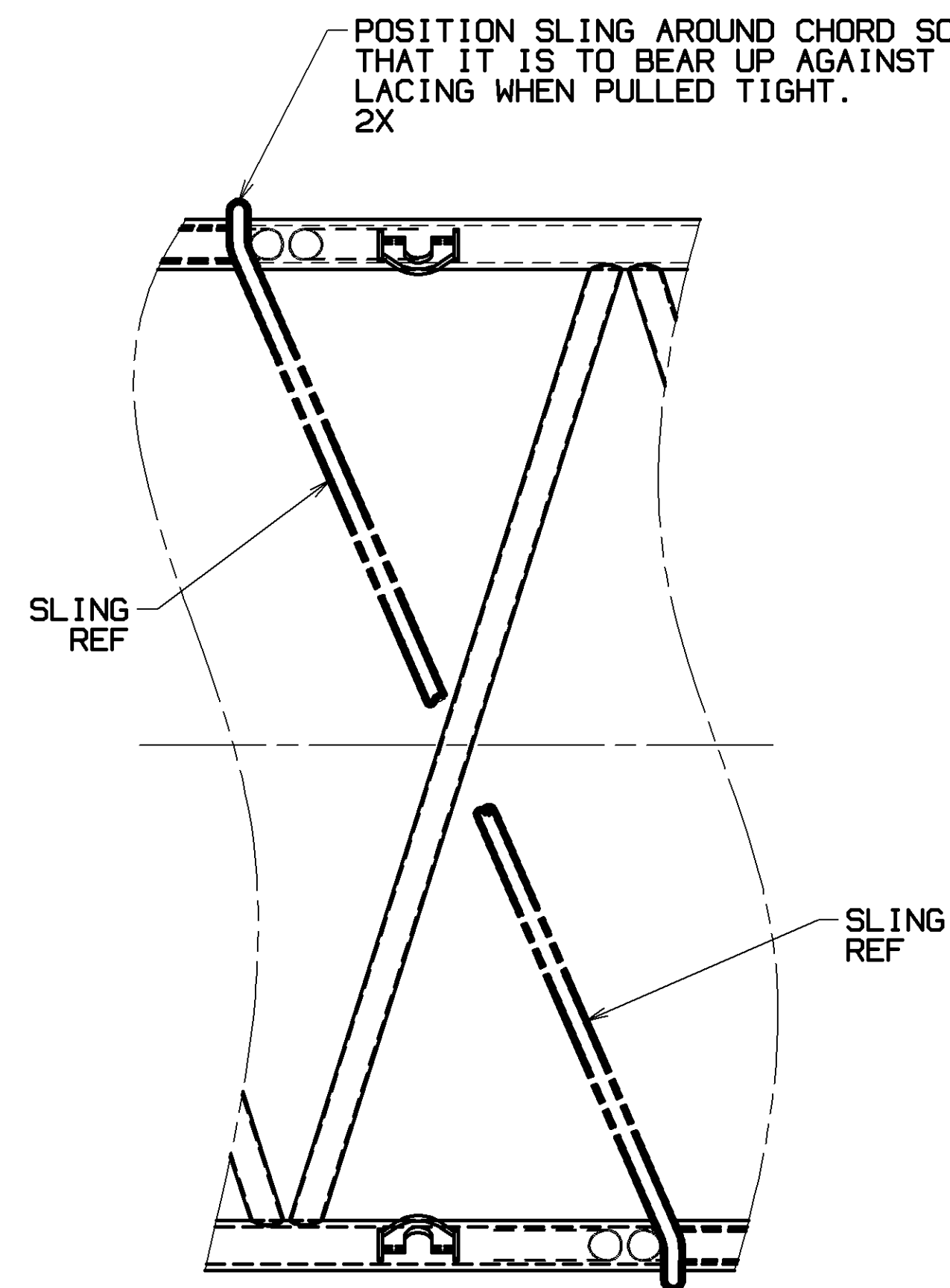


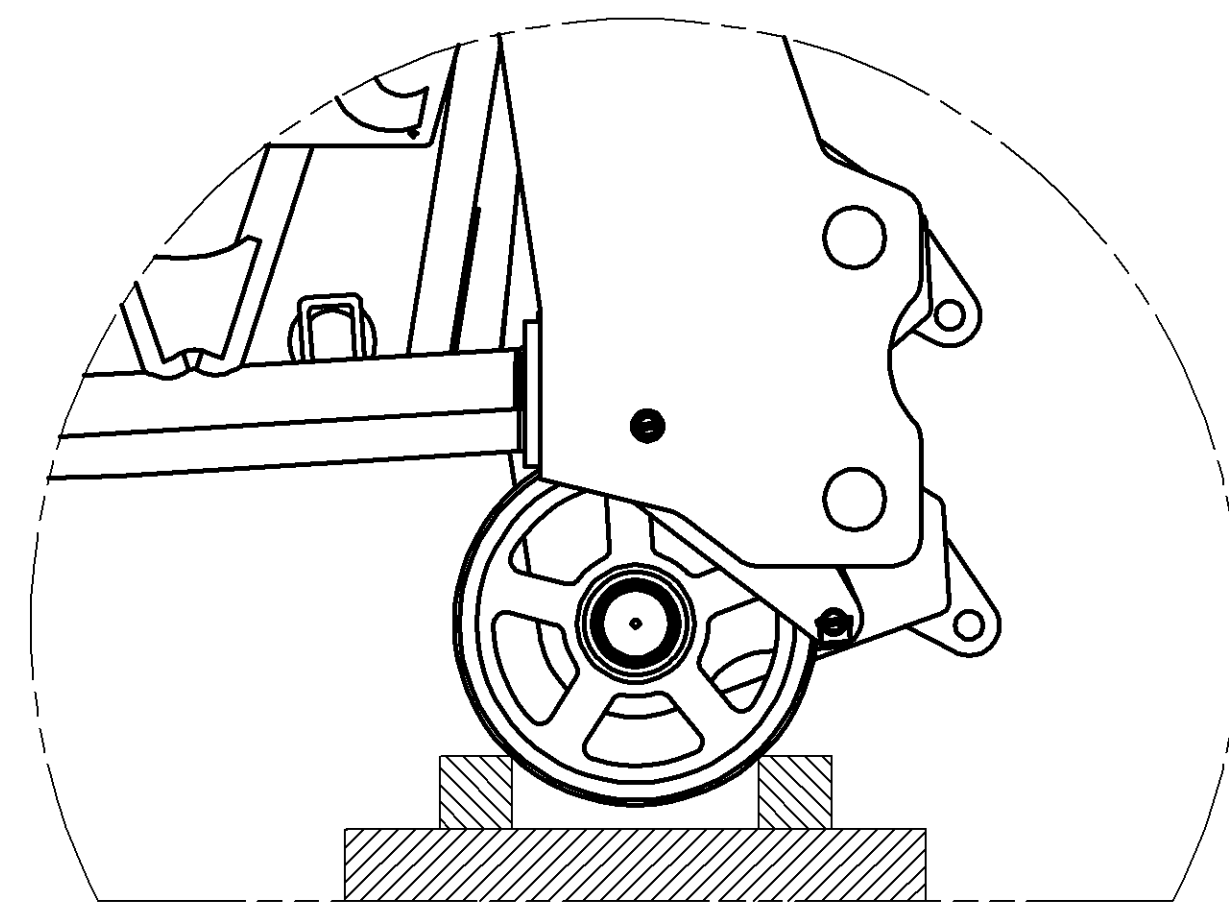
C



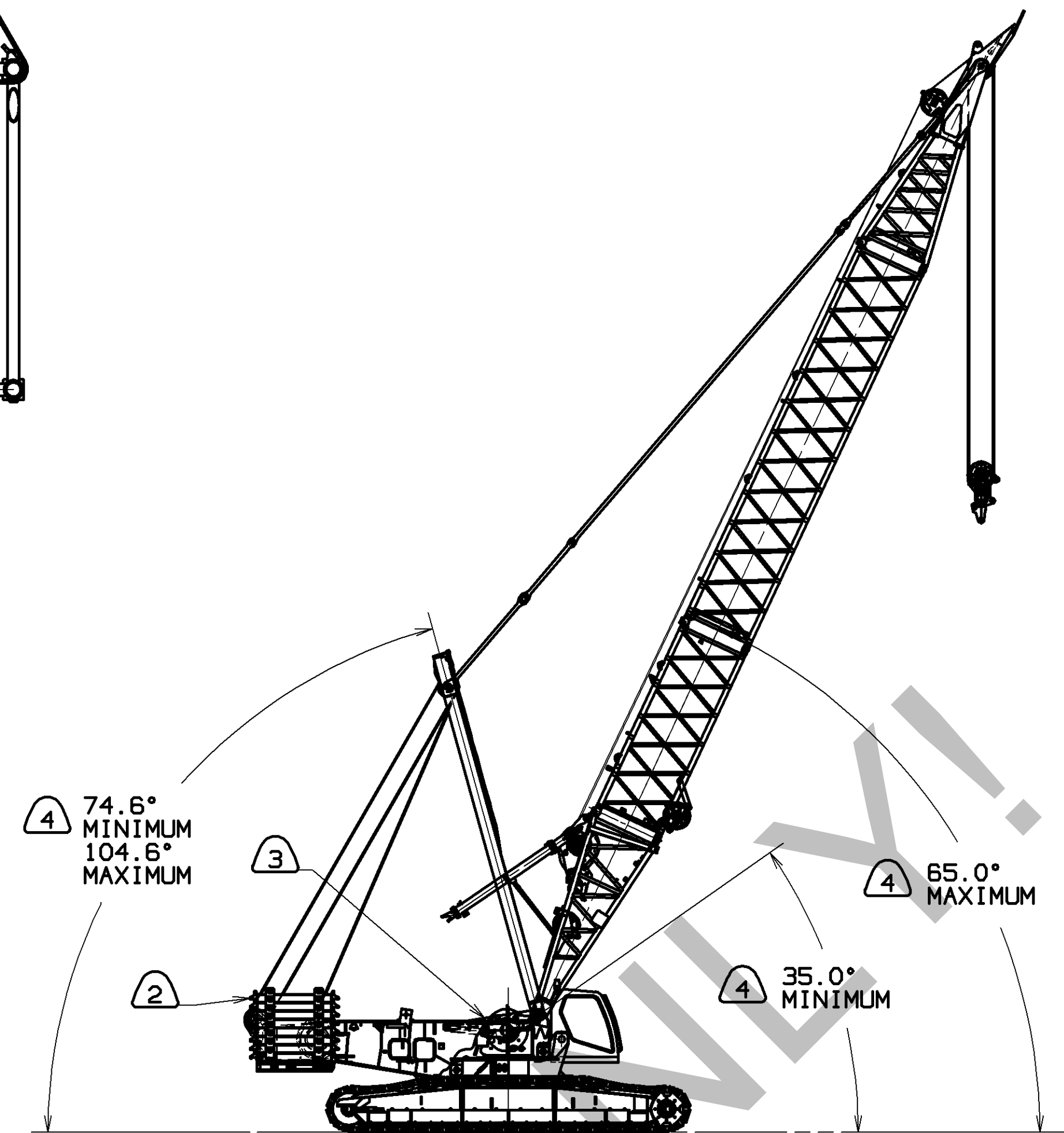
SECTION C-C
SCALE: .38=1FT



VIEW B-B
SCALE: 0.75=1FT



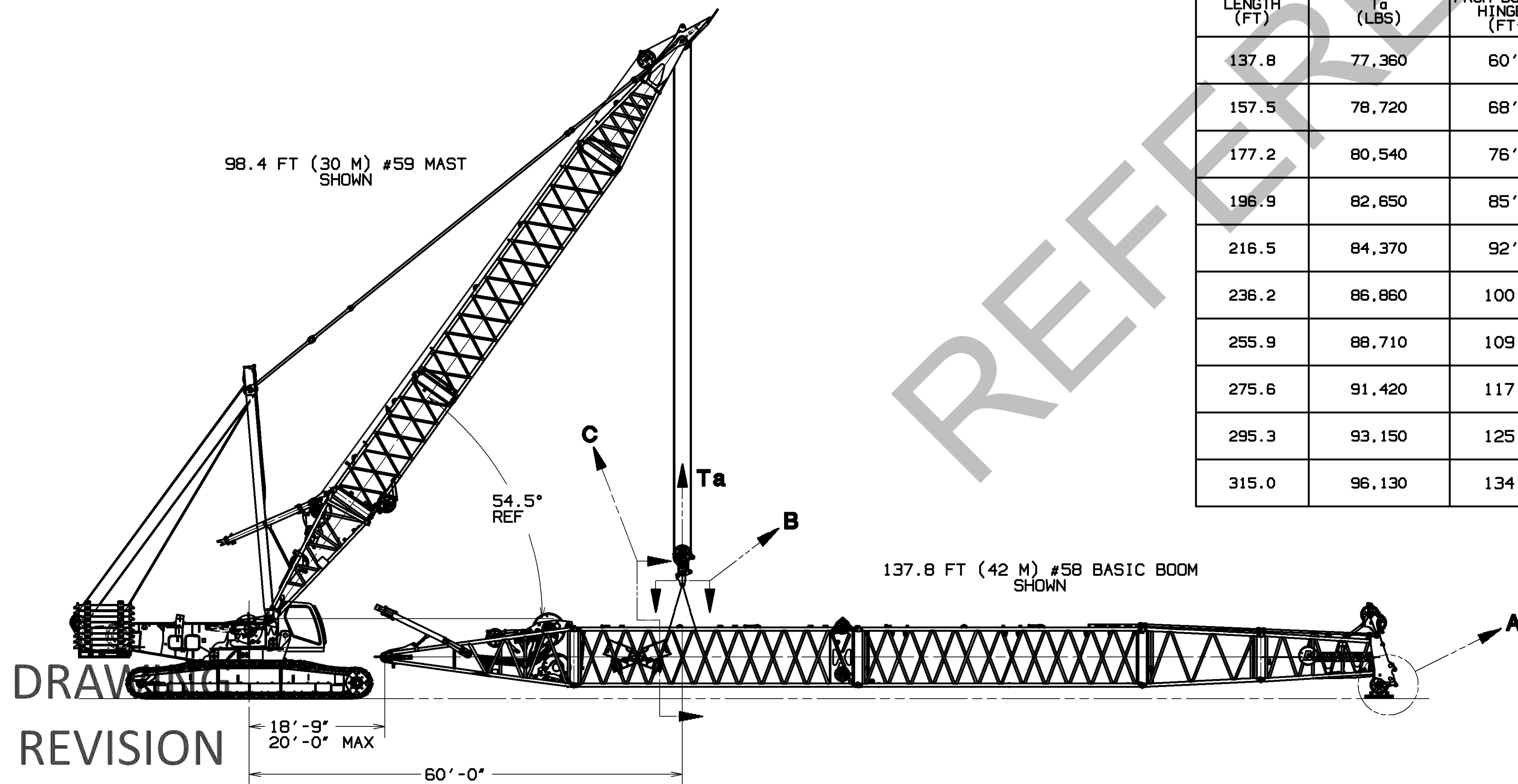
DETAIL A
SCALE: 0.75=1FT
BLOCK LOWER BOOM POINT SIMILAR TO THAT SEEN IN DETAIL A



FIXED MAST LIFTING REQUIREMENTS

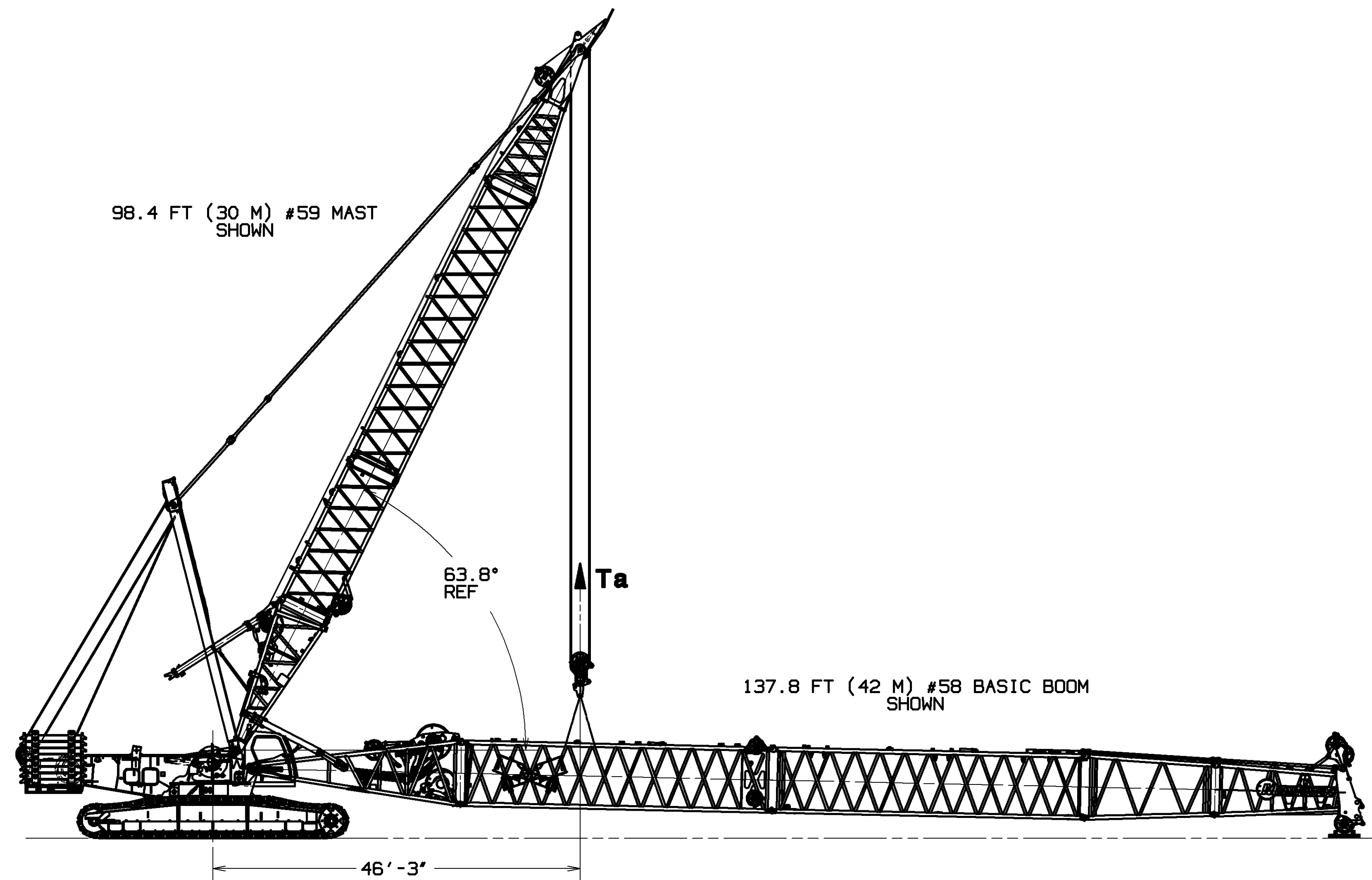
LOADS FOR DIFFERENT BOOM LENGTHS
BASED ON LIFTING AT SHOWN LOCATIONS

BOOM LENGTH (FT)	TENSION T ₀ (LBS)	C.G. FROM BOOM BUTT HINGE PIN (FT-IN)
137.8	77,360	60'-9"
157.5	78,720	68'-8"
177.2	80,540	76'-9"
196.9	82,650	85'-0"
216.5	84,370	92'-3"
236.2	86,860	100'-9"
255.9	88,710	109'-0"
275.6	91,420	117'-7"
295.3	93,150	125'-7"
315.0	96,130	134'-4"



STEP 2

RAISE THE CRANE TO THE BOOM BUTT UNTIL A MAXIMUM OF 20 FT SEPARATES THE BOOM HINGE ON THE ROTATING BED FROM THE BOOM HINGE ON THE BOOM BUTT. SLING AROUND THE UPPER BOOM CHORDS AS SHOWN IN VIEW B-B AND SECTION C-C. LOAD RADIUS TO BE 60 FT-0 IN.



STEP 3

SIMULTANEOUSLY TRAVEL FORWARD AND HOIST UP UNTIL THE ROTATING BED HINGE PIN IS IN-LINE WITH THE BOOM HINGE PIN.

BILL OF MATERIAL					ASSEMBLED USED ON
QTY	UNIT	DESCRIPTION	LOCATION	MATERIAL	DATE
1		LOADS IN THIS TABLE ARE BASED ON #58 BOOM WITH RIGGING WINCH, LUFFING HOIST, AND WALKWAYS			
2		COUNTERWEIGHT REQUIREMENTS:			
		CRANE MUST BE EQUIPPED WITH A MINIMUM OF SERIES 1 COUNTERWEIGHT, 224,000 LBS (101,600 KG) CRANE COUNTERWEIGHT, TRAY AND 10 SIDE BOXES TOTAL.			
3		CAUTION: WHEN LOWERING FIXED MAST RAISING CYLINDERS WILL RAISE TO LIVE MAST. LIFTING LOADS WITH THE MAST RAISING CYLINDERS ENGAGED TO LIVE MAST IS NOT PERMITTED. USE MACHINE SET-UP REMOTE TO LOWER MAST RAISING CYLINDERS TO STOWED POSITION.			
4		CAUTION: MAXIMUM FIXED MAST ANGLE FOR BOOM HANDLING IS 65°. LIFTING LOADS AT MAST ANGLES HIGHER THAN 65° IS NOT PERMITTED. FOR 65° FIXED MAST ANGLE, THE LIVE MAST WILL BE APPROXIMATELY 74.6° FROM HORIZONTAL.			
5		CAUTION: BASKET SLING AROUND BOTH CHORDS IS NOT PERMITTED. BASKET SLING AROUND BOTH CHORDS MAY CAUSE DAMAGE TO THE BOOM SECTION.			
6		IN ALL CASES DO NOT EXCEED THE CAPACITY FOR THE 98.4 FT (30 M) #58 FIXED MAST.			

98.4 FT #58 FIXED MAST CAPACITIES

LOAD RADIUS (FT)	LIVE MAST ANGLE (DEGREES)	LATTICE MAST ANGLE (DEGREES)	LOAD POINT TO GROUND (FT)	CAPACITY (LBS)
45	75.0°	64.6°	88.9	238,700
50	78.3°	61.4°	86.4	203,800
55	81.6°	58.0°	83.5	177,100
60	85.1°	54.5°	80.1	156,000
65	88.8°	50.8°	76.3	138,800
70	92.7°	47.0°	71.9	124,700
75	96.8°	42.8°	66.9	112,700
80	101.3°	38.4°	61.1	102,500

* DENOTES CAPACITY BASED ON STRUCTURAL COMPETENCE

81034490

PRIVATE LABELING
REQUIREMENT TO
CONFORM TO
ENGINEERING
SPECIFICATION
8829103794 FOR
COMPONENTS LISTED
IN 88290-06-006

05-12-14

PATTERN NO.

BOOM ASSY

#58 W/ 30 M MAST ASSIST

81034490

C