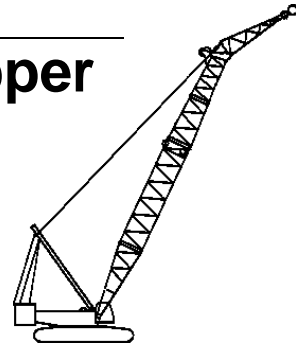


Liftcrane Boom Extended Upper Point Capacities



Boom No. 58WA with 7,6 m Extended Upper Boom Point
101 600 kg Crane Counterweight
0 kg Carbody Counterweight
360 Degree Rating



16000
SERIES 1



LIFTING CAPACITIES: Lifting capacities for various boom lengths and operating radii are for freely suspended loads and do not exceed 75% of a static tipping load. Capacities based on structural competence are denoted by an asterisk (*).

Upper boom point (upper sheave) capacity for liftcrane service with single part whip line is 13 610 kg or 27 220 kg with two part line. In all cases, upper boom point capacities cannot exceed those listed for extended upper boom point (lower sheave) capacity.

Weight of all load blocks, hooks, weight ball, slings, hoist lines, etc., beneath upper boom point sheaves, is considered part of extended upper boom point load. Boom is not to be lowered beyond radii where combined weights are greater than rated capacity. Where no capacity is shown, operation is not intended or approved.

OPERATING CONDITIONS: Machine to operate in a level position on a firm uniformly supporting surface. Refer to boom rigging **No. 81009833**, Wire Rope Specification chart **No. 8889-A**, Counterweight Arrangement chart **No. 8682-A** and Wind Conditions chart **No. 8688-A**. Crane operator judgment must be used to allow for dynamic load effects of swinging, hoisting or lowering, travel, wind conditions, as well as adverse operating conditions and physical machine depreciation. Refer to Operator's Manual for operating guidelines.

MACHINE TRAVEL: Machine to travel on a firm, level and uniformly supporting surface and boom within boom angle range shown in capacity chart. Refer to Maximum Allowable Travel Specification chart **No. 8890-A**



OPERATING RADIUS: Operating radius is horizontal distance from axis of rotation to center of vertical hoist line or load block.



BOOM ANGLE: Boom angle in degrees ($^{\circ}$) is angle between horizontal and centerline of boom butt and inserts, and is an indication of operating radius. In all cases, operating radius shall govern capacity.




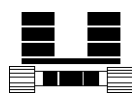
EXTENDED UPPER BOOM POINT ELEVATION: Extended upper boom point elevation is vertical distance from ground level to centerline of extended upper boom point (lower sheave) shaft.

MACHINE EQUIPMENT: Machine equipped with 10 363 mm crawlers, 1 524 mm treads, 9 754 mm live mast, 26 part boom hoist reeving, boom support straps, 101 600 kg crane counterweight and 0 kg carbody counterweight.


WITH OR WITHOUT BOOM CATWALKS	
Maximum Boom Length Lifted Unassisted	
Over End of Blocked Crawlers	Over Side of Crawlers
Boom Length	Boom Length
68,0 m	62,0 m
Load block, hook and weight ball on ground until combined weights are within rated capacity of chart.	


Explanation of Symbols


58WA  Boom No. 58WA with 7,6 m
Extended Upper Boom Point


 Crane Counterweight
+
Carbody Counterweight


 360°
360 Degree Rating


 Operating Radius
(see page 1)

 Boom Angle
(see page 1)

 Extended Upper Boom
Point Elevation
(see page 1)

 Lifting Capacities
(see page 1)

 Boom Length

 Extended Upper Boom
Point Offset Angle

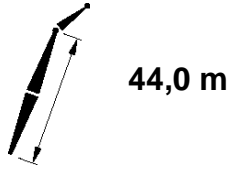
REFERENCE ONLY!

16000 S-1

ASME B30.5



101 600 kg
+
0 kg



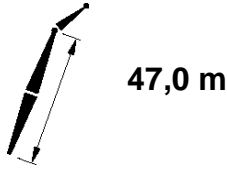
m	28°			35°			m
	m	m	kg	m	kg	kg	
12,2	82,1	52,9	129 900 *				12,2
14,0	80,0	52,4	110 000				14,0
16,0	77,7	51,9	89 200				16,0
18,0	75,3	51,3	74 600	76,1	51,0	75 500	18,0
20,0	73,0	50,5	63 600	73,7	50,3	64 100	20,0
22,0	70,5	49,7	54 900	71,3	49,4	55 400	22,0
24,0	68,1	48,8	48 000	68,8	48,5	48 400	24,0
26,0	65,6	47,8	42 300	66,3	47,5	42 700	26,0
28,0	63,0	46,6	37 500	63,7	46,3	37 900	28,0
30,0	60,4	45,4	33 500	61,0	45,0	33 800	30,0
32,0	57,6	44,0	30 000	58,3	43,6	30 300	32,0
34,0	54,8	42,4	27 000	55,4	42,0	27 200	34,0
36,0	51,9	40,7	24 300	52,5	40,3	24 500	36,0
38,0	48,8	38,8	21 900	49,3	38,4	22 100	38,0
40,0	45,5	36,6	19 800	46,0	36,2	20 000	40,0
42,0	42,0	34,2	17 900	42,5	33,8	18 100	42,0
44,0	38,2	31,5	16 200	38,6	31,0	16 300	44,0
46,0	34,0	28,3	14 600				46,0

16000 S-1

ASME B30.5



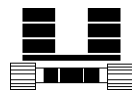
166 920 kg
+
54 430 kg



m	28°			35°			m
	m	m	kg	m	kg	kg	
12,2	82,5	55,9	129 900 *				12,2
14,0	80,6	55,5	109 900				14,0
16,0	78,4	55,0	89 000				16,0
18,0	76,2	54,4	74 400	76,9	54,1	75 300	18,0
20,0	73,9	53,7	63 300	74,7	53,4	64 000	20,0
22,0	71,7	53,0	54 600	72,4	52,7	55 200	22,0
24,0	69,4	52,1	47 700	70,1	51,8	48 200	24,0
26,0	67,1	51,2	42 000	67,7	50,8	42 400	26,0
28,0	64,7	50,1	37 200	65,3	49,8	37 600	28,0
30,0	62,2	48,9	33 200	62,9	48,6	33 500	30,0
32,0	59,7	47,6	29 700	60,3	47,3	29 900	32,0
34,0	57,1	46,2	26 600	57,7	45,9	26 900	34,0
36,0	54,4	44,6	24 000	55,0	44,3	24 200	36,0
38,0	51,6	42,9	21 600	52,2	42,5	21 800	38,0
40,0	48,7	41,0	19 500	49,3	40,6	19 700	40,0
42,0	45,7	38,9	17 600	46,2	38,5	17 700	42,0
44,0	42,4	36,5	15 900	42,8	36,1	16 000	44,0
46,0	38,9	33,8	14 300	39,3	33,3	14 400	46,0
48,0	35,0	30,8	12 800				48,0
50,0	30,6	27,2	11 500				50,0

16000 S-1

ASME B30.5



101 600 kg
+
0 kg



50,0 m

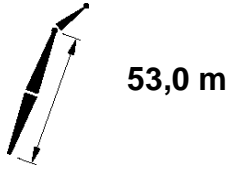
	28°			35°			
	m	m	kg	m	m	kg	
12,2	82,9	59,0	129 900 *				12,2
14,0	81,1	58,6	109 900				14,0
16,0	79,0	58,1	89 000				16,0
18,0	76,9	57,6	74 300	77,6	57,3	75 300	18,0
20,0	74,8	56,9	63 200	75,5	56,6	63 900	20,0
22,0	72,7	56,2	54 600	73,4	55,9	55 100	22,0
24,0	70,5	55,4	47 600	71,2	55,1	48 100	24,0
26,0	68,4	54,5	41 900	69,0	54,2	42 300	26,0
28,0	66,1	53,5	37 100	66,8	53,2	37 500	28,0
30,0	63,8	52,4	33 000	64,5	52,1	33 400	30,0
32,0	61,5	51,2	29 600	62,1	50,9	29 900	32,0
34,0	59,1	49,9	26 500	59,7	49,5	26 800	34,0
36,0	56,6	48,4	23 900	57,2	48,1	24 100	36,0
38,0	54,1	46,9	21 500	54,7	46,5	21 700	38,0
40,0	51,5	45,1	19 400	52,0	44,8	19 600	40,0
42,0	48,7	43,2	17 500	49,2	42,8	17 700	42,0
44,0	45,8	41,1	15 800	46,3	40,7	15 900	44,0
46,0	42,7	38,8	14 200	43,2	38,4	14 300	46,0
48,0	39,4	36,2	12 800	39,8	35,7	12 900	48,0
50,0	35,9	33,2	11 500	36,2	32,7	11 600	50,0
52,0	31,9	29,8	10 200				52,0

16000 S-1

ASME B30.5



166 920 kg
+
54 430 kg



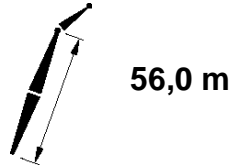
m	28°			35°			m
	m	m	kg	m	kg	kg	
13,7	81,8	61,7	113 000				13,7
14,0	81,5	61,7	109 800				14,0
16,0	79,6	61,2	88 800				16,0
18,0	77,6	60,7	74 100	78,3	60,4	75 100	18,0
20,0	75,6	60,1	63 000	76,3	59,8	63 600	20,0
22,0	73,6	59,4	54 300	74,3	59,1	54 800	22,0
24,0	71,6	58,6	47 300	72,2	58,3	47 800	24,0
26,0	69,5	57,8	41 600	70,1	57,5	42 000	26,0
28,0	67,4	56,8	36 800	68,0	56,5	37 200	28,0
30,0	65,3	55,8	32 700	65,9	55,5	33 100	30,0
32,0	63,1	54,7	29 200	63,7	54,4	29 500	32,0
34,0	60,9	53,5	26 200	61,4	53,1	26 500	34,0
36,0	58,6	52,1	23 500	59,1	51,8	23 700	36,0
38,0	56,2	50,7	21 200	56,8	50,3	21 400	38,0
40,0	53,8	49,1	19 000	54,3	48,7	19 200	40,0
42,0	51,3	47,4	17 100	51,8	47,0	17 300	42,0
44,0	48,7	45,5	15 400	49,1	45,1	15 600	44,0
46,0	45,9	43,4	13 800	46,4	43,0	14 000	46,0
48,0	43,0	41,1	12 400	43,4	40,6	12 600	48,0
50,0	39,9	38,5	11 100	40,3	38,0	11 200	50,0
52,0	36,6	35,7	9 900				52,0
54,0	33,0	32,4	8 800				54,0

16000 S-1

ASME B30.5



101 600 kg
+
0 kg



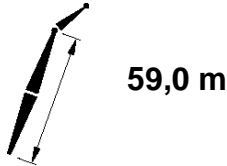
m	28°			35°			m
	m	m	kg	m	kg	m	
13,7	82,2	64,8	112 900				13,7
14,0	81,9	64,7	109 700				14,0
16,0	80,1	64,3	88 600				16,0
18,0	78,2	63,8	73 900	78,8	63,5	74 900	18,0
20,0	76,3	63,2	62 800	77,0	62,9	63 500	20,0
22,0	74,4	62,6	54 100	75,0	62,3	54 700	22,0
24,0	72,5	61,8	47 100	73,1	61,5	47 600	24,0
26,0	70,5	61,0	41 300	71,1	60,7	41 800	26,0
28,0	68,6	60,2	36 500	69,2	59,8	36 900	28,0
30,0	66,6	59,2	32 500	67,1	58,9	32 800	30,0
32,0	64,5	58,1	28 900	65,1	57,8	29 300	32,0
34,0	62,4	57,0	25 900	63,0	56,7	26 200	34,0
36,0	60,3	55,8	23 200	60,8	55,4	23 500	36,0
38,0	58,1	54,4	20 900	58,6	54,0	21 100	38,0
40,0	55,9	52,9	18 800	56,4	52,6	19 000	40,0
42,0	53,5	51,3	16 900	54,0	51,0	17 100	42,0
44,0	51,1	49,6	15 200	51,6	49,2	15 300	44,0
46,0	48,6	47,7	13 600	49,1	47,3	13 800	46,0
48,0	46,0	45,6	12 200	46,5	45,2	12 300	48,0
50,0	43,3	43,4	10 900	43,7	42,9	11 000	50,0
52,0	40,4	40,9	9 600	40,8	40,4	9 800	52,0
54,0	37,3	38,1	8 500	37,6	37,5	8 600	54,0
56,0	33,9	34,9	7 500				56,0

16000 S-1

ASME B30.5



166 920 kg
+
54 430 kg



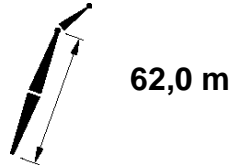
m	28°			35°			m
	m	m	kg	m	kg	m	
13,7	82,5	67,8	112 800				13,7
14,0	82,3	67,8	109 600				14,0
16,0	80,5	67,4	88 500				16,0
18,0	78,8	66,9	73 700	79,4	66,6	74 700	18,0
20,0	77,0	66,3	62 500	77,6	66,0	63 200	20,0
22,0	75,2	65,7	53 800	75,8	65,4	54 400	22,0
24,0	73,3	65,0	46 800	73,9	64,7	47 300	24,0
26,0	71,5	64,3	41 000	72,1	64,0	41 500	26,0
28,0	69,6	63,4	36 200	70,2	63,1	36 600	28,0
30,0	67,7	62,5	32 100	68,3	62,2	32 500	30,0
32,0	65,8	61,5	28 600	66,3	61,2	28 900	32,0
34,0	63,8	60,5	25 500	64,3	60,1	25 800	34,0
36,0	61,8	59,3	22 800	62,3	58,9	23 100	36,0
38,0	59,8	58,0	20 500	60,3	57,7	20 700	38,0
40,0	57,7	56,6	18 300	58,2	56,3	18 600	40,0
42,0	55,5	55,2	16 500	56,0	54,8	16 700	42,0
44,0	53,3	53,6	14 800	53,8	53,2	14 900	44,0
46,0	51,0	51,8	13 200	51,5	51,4	13 300	46,0
48,0	48,6	49,9	11 800	49,1	49,5	11 900	48,0
50,0	46,1	47,9	10 500	46,6	47,5	10 600	50,0
52,0	43,5	45,6	9 300	43,9	45,2	9 400	52,0
54,0	40,8	43,2	8 200	41,2	42,7	8 300	54,0
56,0	37,9	40,4	7 100	38,2	39,9	7 200	56,0
58,0	34,7	37,4	6 100				58,0
60,0	31,2	33,9	5 200				60,0

16000 S-1

ASME B30.5



101 600 kg
+
0 kg



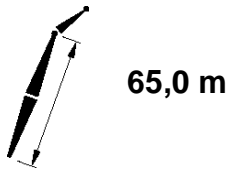
m	28°			35°			m
	m	m	kg	m	kg	m	
13,7	82,9	70,9	112 800				13,7
14,0	82,6	70,8	109 500				14,0
16,0	80,9	70,4	88 400	81,5	70,1	89 900	16,0
18,0	79,3	70,0	73 600	79,8	69,7	74 400	18,0
20,0	77,5	69,4	62 400	78,1	69,1	63 100	20,0
22,0	75,8	68,9	53 600	76,4	68,6	54 200	22,0
24,0	74,1	68,2	46 600	74,6	67,9	47 100	24,0
26,0	72,3	67,5	40 800	72,9	67,2	41 300	26,0
28,0	70,5	66,7	36 000	71,1	66,4	36 400	28,0
30,0	68,7	65,8	31 900	69,3	65,5	32 300	30,0
32,0	66,9	64,9	28 400	67,4	64,6	28 800	32,0
34,0	65,1	63,9	25 300	65,6	63,5	25 700	34,0
36,0	63,2	62,8	22 700	63,7	62,4	23 000	36,0
38,0	61,2	61,6	20 300	61,7	61,2	20 600	38,0
40,0	59,3	60,3	18 200	59,8	59,9	18 400	40,0
42,0	57,3	58,9	16 300	57,7	58,5	16 500	42,0
44,0	55,2	57,4	14 500	55,7	57,0	14 800	44,0
46,0	53,1	55,8	13 000	53,5	55,4	13 200	46,0
48,0	50,9	54,1	11 600	51,3	53,7	11 800	48,0
50,0	48,6	52,2	10 300	49,0	51,8	10 400	50,0
52,0	46,2	50,1	9 100	46,6	49,7	9 200	52,0
54,0	43,8	47,9	8 000	44,1	47,5	8 100	54,0
56,0	41,2	45,5	6 900	41,5	45,0	7 000	56,0
58,0	38,4	42,8	6 000	38,7	42,3	6 100	58,0
60,0	35,4	39,8	5 100				60,0

16000 S-1

ASME B30.5



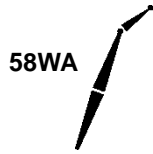
166 920 kg
+
54 430 kg



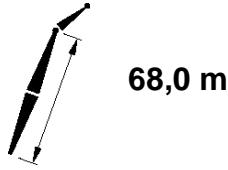
m	28°			35°			m
	m	m	kg	m	kg	m	
15,2	81,9	73,6	95 300	82,5	73,3	96 400	15,2
16,0	81,3	73,5	88 700	81,9	73,2	89 700	16,0
18,0	79,7	73,0	73 300	80,3	72,7	74 200	18,0
20,0	78,1	72,5	62 100	78,6	72,2	62 900	20,0
22,0	76,4	72,0	53 300	77,0	71,7	54 000	22,0
24,0	74,8	71,4	46 300	75,3	71,1	46 800	24,0
26,0	73,1	70,7	40 500	73,6	70,4	41 000	26,0
28,0	71,4	69,9	35 600	71,9	69,6	36 100	28,0
30,0	69,7	69,1	31 500	70,2	68,8	32 000	30,0
32,0	67,9	68,2	28 000	68,5	67,9	28 400	32,0
34,0	66,2	67,2	24 900	66,7	66,9	25 300	34,0
36,0	64,4	66,2	22 300	64,9	65,9	22 600	36,0
38,0	62,6	65,1	19 900	63,1	64,7	20 200	38,0
40,0	60,7	63,9	17 800	61,2	63,5	18 000	40,0
42,0	58,8	62,6	15 900	59,3	62,2	16 100	42,0
44,0	56,9	61,2	14 100	57,3	60,8	14 400	44,0
46,0	54,9	59,6	12 600	55,3	59,3	12 800	46,0
48,0	52,9	58,0	11 200	53,3	57,6	11 400	48,0
50,0	50,8	56,3	9 900	51,2	55,9	10 000	50,0
52,0	48,6	54,4	8 600	49,0	54,0	8 800	52,0
54,0	46,3	52,4	7 600	46,7	51,9	7 700	54,0
56,0	44,0	50,2	6 500	44,3	49,7	6 600	56,0
58,0	41,5	47,8	5 600	41,8	47,3	5 700	58,0

16000 S-1

ASME B30.5



101 600 kg
+
0 kg



	28°			35°			
	m	m	kg	m	kg	m	
15,2	82,3	76,7	95 200	82,8	76,4	96 300	15,2
16,0	81,7	76,5	88 500	82,2	76,2	89 600	16,0
18,0	80,1	76,1	73 100	80,7	75,8	74 000	18,0
20,0	78,6	75,6	61 900	79,1	75,3	62 700	20,0
22,0	77,0	75,1	53 100	77,5	74,8	53 800	22,0
24,0	75,4	74,5	46 000	75,9	74,2	46 600	24,0
26,0	73,8	73,9	40 200	74,3	73,5	40 800	26,0
28,0	72,2	73,1	35 300	72,7	72,8	35 800	28,0
30,0	70,5	72,4	31 200	71,0	72,0	31 700	30,0
32,0	68,9	71,5	27 700	69,4	71,2	28 100	32,0
34,0	67,2	70,6	24 600	67,7	70,3	25 000	34,0
36,0	65,5	69,6	21 900	66,0	69,3	22 300	36,0
38,0	63,8	68,5	19 600	64,3	68,2	19 900	38,0
40,0	62,0	67,4	17 400	62,5	67,0	17 700	40,0
42,0	60,2	66,1	15 500	60,7	65,8	15 800	42,0
44,0	58,4	64,8	13 800	58,9	64,5	14 000	44,0
46,0	56,6	63,4	12 300	57,0	63,0	12 500	46,0
48,0	54,6	61,9	10 900	55,1	61,5	11 000	48,0
50,0	52,7	60,3	9 500	53,1	59,9	9 700	50,0
52,0	50,7	58,5	8 300	51,1	58,1	8 500	52,0
54,0	48,6	56,6	7 200	48,9	56,2	7 400	54,0
56,0	46,4	54,6	6 200	46,8	54,2	6 400	56,0
58,0	44,2	52,4	5 300	44,5	52,0	5 400	58,0