

Clamshell/Grapple Capacities

Boom No. 74A
79,400 lb Crane Counterweight
0 lb Carbody Counterweight
360 Degree Rating

MLC165-1



LIFTING CAPACITIES: Lifting capacities for various boom lengths and operating radii are for freely suspended loads and may be based on percent of static tipping or strength of structural components.

Weight of bucket is considered part of load. Where no capacity is shown, operation is not intended or approved.

Clamshell/grapple capacities shown are intended for limited duration applications. Continuous operation at these capacities may reduce component life.

OPERATING CONDITIONS: Machine to operate in a level position on a firm uniformly supporting surface. Refer to Boom Rigging **No. 81023602** and Wire Rope Specification chart **No. 9558-A**. Crane operator judgment must be used to allow for dynamic load effects of swinging, hoisting or lowering, travel, wind conditions, as well as adverse operating conditions and physical machine depreciation. Refer to the Operator Manual for operating guidelines.

WIND CONDITIONS: Machine may be operated in winds up to 35 mph provided crane operator judgment is used to allow for wind effect on lifted load and other considerations noted on capacity chart are followed. Wind speed to be measured at boom point elevation. **Operation is not permitted when wind is above 35 mph.** Park crane with bucket on ground or secured and position boom at 50 degrees. Lower boom onto blocking at ground level when wind is above 50 mph.

MACHINE TRAVEL: Machine to travel on a firm, level, and uniformly supporting surface. Boom must be within boom angle range shown in capacity chart. Refer to Maximum Allowable Travel Specification chart **No. 9557-A**.



OPERATING RADIUS: Operating radius is horizontal distance from axis of rotation to center of gravity of freely suspended load.



BOOM ANGLE: Boom angle in degrees (°) is angle between horizontal and centerline of boom butt and inserts, and is an indication of operating radius. In all cases, operating radius shall govern capacity.

MACHINE EQUIPMENT: Machine equipped with 26 ft 2 in. crawlers, 43 in. treads, 23 ft 7 in. live mast, 18 part boom hoist reeving, boom support straps, 79,400 lb crane counterweight, and 0 lb carbody counterweight.



79,400 lb Crane Counterweight
4 Side Boxes

WARNING: Free fall operation is limited to 13,000 lb per part of line when lowering load with free fall clutch/brake pedal. Hydraulic power must be used for full line pull.

Explanation of Symbols



Boom No. 74A



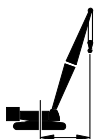
Crane Counterweight
+
Carbody Counterweight



360 Degree Rating



Boom Length



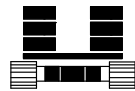
Operating Radius
(see page 1)



Boom Angle
(see page 1)



Lifting Capacities
(see page 1)



79,400 lb
+
0 lb

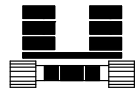


49.2 ft		
ft	°	lb
25	69.5	26,000
30	63.0	26,000
35	56.0	26,000
40	48.4	26,000
45	39.6	26,000
50	28.3	26,000

59.1 ft		
ft	°	lb
30	67.8	26,000
35	62.4	26,000
40	56.6	26,000
45	50.4	26,000
50	43.5	26,000
55	35.5	25,900
60	25.2	22,200

68.9 ft		
ft	°	lb
35	66.6	26,000
40	62.0	26,000
45	57.0	26,000
50	51.8	26,000
55	46.1	25,500
60	39.8	22,100
65	32.4	19,100
70	22.8	16,300

REFERENCE ONLY



79,400 lb
+
0 lb



78.7 ft		
ft	°	lb
35	69.7	26,000
40	65.8	26,000
45	61.6	26,000
50	57.3	26,000
55	52.8	25,300
60	48.0	22,000
65	42.7	19,000
70	36.8	16,500
75	29.9	14,100
80	20.9	12,000

88.6 ft		
ft	°	lb
40	68.6	26,000
45	65.1	26,000
50	61.4	26,000
55	57.6	25,100
60	53.6	21,900
65	49.4	19,000
70	44.9	16,500
75	39.9	14,300
80	34.4	12,300
85	27.8	10,500

98.4 ft		
ft	°	lb
45	67.7	26,000
50	64.5	26,000
55	61.2	24,600
60	57.8	21,400
65	54.2	18,600
70	50.5	16,200
75	46.5	14,000
80	42.2	12,000
85	37.6	10,300
90	32.3	8,700
95	26.1	7,200

REFERENCE ONLY



79,400 lb
+
0 lb



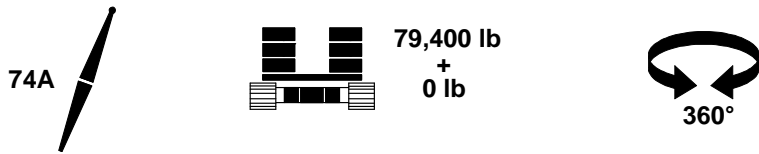
108.3 ft		
ft	°	lb
45	69.9	26,000
50	67.0	26,000
55	64.1	24,300
60	61.1	21,300
65	57.9	18,600
70	54.7	16,200
75	51.4	14,000
80	47.8	12,100
85	44.1	10,400
90	40.0	8,800
95	35.6	7,300
100	30.6	6,000


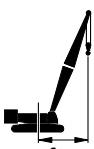


118.1 ft		
ft	°	lb
50	69.0	26,000
55	66.4	23,700
60	63.7	20,700
65	60.9	18,000
70	58.1	15,700
75	55.1	13,600
80	52.1	11,700
85	48.9	9,900
90	45.5	8,400
95	41.9	7,000
100	38.1	5,700

128.0 ft		
ft	°	lb
55	68.3	23,200
60	65.9	20,300
65	63.4	17,600
70	60.8	15,300
75	58.2	13,200
80	55.5	11,400
85	52.7	9,700
90	49.8	8,100
95	46.7	6,700
100	43.5	5,400

REFERENCE ONLY

MLC165-1



 137.8 ft		
 ft	 °	 lb
55	69.9	22,500
60	67.7	19,600
65	65.4	17,000
70	63.1	14,700
75	60.7	12,700
80	58.3	10,800
85	55.8	9,200
90	53.2	7,600
95	50.5	6,200
100	47.7	5,000